



Cañon City, CO

Technical Appendices

2018



NRC
National Research Center Inc.

2955 Valmont Road Suite 300
Boulder, Colorado 80301
n-r-c.com • 303-444-7863



Leaders at the Core of Better Communities

777 North Capitol Street NE Suite 500
Washington, DC 20002
icma.org • 800-745-8780

Contents

Appendix A: Complete Survey Responses	1
Appendix B: Benchmark Comparisons	25
Appendix C: Detailed Survey Methods	35
Appendix D: Survey Materials	40



The National Citizen Survey™
© 2001-2018 National Research Center, Inc.

The NCS™ is presented by NRC in collaboration with ICMA.

NRC is a charter member of the AAPOR Transparency Initiative, providing clear disclosure of our sound and ethical survey research practices.

Appendix A: Complete Survey Responses

Responses excluding “don’t know”

The following pages contain a complete set of responses to each question on the survey, excluding the “don’t know” responses. The percent of respondents giving a particular response is shown followed by the number of respondents (denoted with “N=”).

Table 1: Question 1

Please rate each of the following aspects of quality of life in Cañon City:	Excellent		Good		Fair		Poor		Total	
Cañon City as a place to live	14%	N=64	54%	N=256	27%	N=129	5%	N=24	100%	N=474
Your neighborhood as a place to live	21%	N=101	49%	N=238	25%	N=119	5%	N=23	100%	N=481
Cañon City as a place to raise children	12%	N=49	44%	N=177	34%	N=137	10%	N=42	100%	N=405
Cañon City as a place to work	6%	N=24	22%	N=91	32%	N=132	40%	N=165	100%	N=411
Cañon City as a place to visit	26%	N=123	38%	N=174	29%	N=133	7%	N=34	100%	N=464
Cañon City as a place to retire	24%	N=105	45%	N=199	23%	N=100	9%	N=38	100%	N=441
The overall quality of life in Cañon City	9%	N=45	50%	N=237	34%	N=159	7%	N=32	100%	N=473

Table 2: Question 2

Please rate each of the following characteristics as they relate to Cañon City as a whole:	Excellent		Good		Fair		Poor		Total	
Overall feeling of safety in Cañon City	12%	N=57	51%	N=241	29%	N=138	8%	N=37	100%	N=472
Overall ease of getting to the places you usually have to visit	13%	N=61	50%	N=237	25%	N=119	13%	N=63	100%	N=480
Quality of overall natural environment in Cañon City	24%	N=113	53%	N=250	19%	N=89	5%	N=24	100%	N=477
Overall “built environment” of Cañon City (including overall design, buildings and parks)	8%	N=39	36%	N=169	36%	N=169	20%	N=96	100%	N=474
Health and wellness opportunities in Cañon City	11%	N=50	30%	N=137	37%	N=173	22%	N=101	100%	N=463
Overall opportunities for education and enrichment	5%	N=23	26%	N=115	47%	N=206	22%	N=97	100%	N=441
Overall economic health of Cañon City	2%	N=9	18%	N=82	48%	N=218	32%	N=147	100%	N=456
Sense of community	3%	N=15	32%	N=149	42%	N=197	22%	N=104	100%	N=464
Overall image or reputation of Cañon City	3%	N=15	28%	N=128	41%	N=190	28%	N=129	100%	N=462

Table 3: Question 3

Please indicate how likely or unlikely you are to do each of the following:	Very likely		Somewhat likely		Somewhat unlikely		Very unlikely		Total	
Recommend living in Cañon City to someone who asks	22%	N=107	46%	N=220	16%	N=74	16%	N=76	100%	N=477
Remain in Cañon City for the next five years	53%	N=245	30%	N=140	9%	N=43	8%	N=36	100%	N=463

Table 4: Question 4

Please rate how safe or unsafe you feel:	Very safe		Somewhat safe		Neither safe nor unsafe		Somewhat unsafe		Very unsafe		Total	
In your neighborhood during the day	59%	N=286	28%	N=133	8%	N=39	3%	N=13	2%	N=10	100%	N=481
In Cañon City's downtown/commercial area during the day	47%	N=224	38%	N=177	8%	N=37	5%	N=24	2%	N=10	100%	N=473

The National Citizen Survey™

Table 5: Question 5

Please rate each of the following characteristics as they relate to Cañon City as a whole:	Excellent		Good		Fair		Poor		Total	
Traffic flow on major streets	3%	N=13	27%	N=127	38%	N=182	33%	N=156	100%	N=478
Ease of public parking	5%	N=26	31%	N=146	37%	N=176	26%	N=124	100%	N=471
Ease of travel by car in Cañon City	7%	N=35	41%	N=193	38%	N=182	14%	N=65	100%	N=475
Ease of travel by bicycle in Cañon City	8%	N=28	29%	N=97	34%	N=117	29%	N=99	100%	N=340
Availability of paths and walking trails	30%	N=135	41%	N=187	20%	N=92	9%	N=39	100%	N=453
Air quality	26%	N=123	59%	N=277	10%	N=47	6%	N=26	100%	N=474
Cleanliness of Cañon City	9%	N=43	47%	N=225	32%	N=156	12%	N=58	100%	N=481
Overall appearance of Cañon City	7%	N=32	40%	N=192	36%	N=175	17%	N=81	100%	N=479
Public places where people want to spend time	11%	N=52	37%	N=173	39%	N=179	13%	N=60	100%	N=464
Variety of housing options	5%	N=23	14%	N=62	32%	N=146	49%	N=223	100%	N=454
Availability of affordable quality housing	2%	N=8	13%	N=59	35%	N=156	50%	N=226	100%	N=450
Fitness opportunities (including exercise classes and paths or trails, etc.)	17%	N=78	47%	N=214	30%	N=139	6%	N=28	100%	N=459
Recreational opportunities	21%	N=98	37%	N=172	29%	N=133	12%	N=57	100%	N=460
Availability of affordable quality food	8%	N=40	37%	N=175	34%	N=163	21%	N=99	100%	N=477
Availability of affordable quality health care	4%	N=16	24%	N=108	43%	N=192	29%	N=130	100%	N=446
Availability of preventive health services	4%	N=17	25%	N=107	42%	N=181	30%	N=129	100%	N=434
Availability of affordable quality mental health care	3%	N=10	19%	N=63	36%	N=121	42%	N=139	100%	N=332
Overall condition of City streets	1%	N=4	11%	N=53	26%	N=126	62%	N=294	100%	N=476

Table 6: Question 6

Please rate each of the following characteristics as they relate to Cañon City as a whole:	Excellent		Good		Fair		Poor		Total	
Availability of affordable quality child care/preschool	3%	N=5	19%	N=41	39%	N=84	39%	N=83	100%	N=214
K-12 education	5%	N=17	44%	N=143	39%	N=126	13%	N=41	100%	N=326
Adult educational opportunities	5%	N=18	25%	N=92	48%	N=175	22%	N=83	100%	N=367
Opportunities to attend cultural/arts/music activities	8%	N=32	35%	N=149	42%	N=177	16%	N=67	100%	N=425
Opportunities to participate in religious or spiritual events and activities	20%	N=75	48%	N=183	24%	N=91	7%	N=28	100%	N=378
Employment opportunities	1%	N=4	11%	N=45	35%	N=146	53%	N=221	100%	N=415
Shopping opportunities	3%	N=15	13%	N=60	39%	N=186	45%	N=211	100%	N=473
Cost of living in Cañon City	7%	N=31	25%	N=117	41%	N=194	27%	N=126	100%	N=469
Overall quality of business and service establishments in Cañon City	3%	N=12	31%	N=149	42%	N=200	24%	N=114	100%	N=474
Vibrant downtown/commercial area	1%	N=5	20%	N=95	39%	N=184	39%	N=183	100%	N=467
Overall quality of new development in Cañon City	2%	N=7	16%	N=70	34%	N=147	47%	N=202	100%	N=426
Opportunities to participate in social events and activities	9%	N=39	43%	N=188	34%	N=149	13%	N=57	100%	N=433
Opportunities to volunteer	14%	N=52	50%	N=186	28%	N=104	9%	N=34	100%	N=375
Opportunities to participate in community matters	10%	N=36	37%	N=136	35%	N=130	18%	N=66	100%	N=369
Openness and acceptance of the community toward people of diverse backgrounds	4%	N=16	22%	N=92	37%	N=152	37%	N=151	100%	N=412
Neighborliness of residents in Cañon City	7%	N=34	33%	N=155	41%	N=193	18%	N=84	100%	N=465

The National Citizen Survey™

Table 7: Question 7

Please indicate whether or not you have done each of the following in the last 12 months.	No		Yes		Total	
Made efforts to conserve water	15%	N=73	85%	N=408	100%	N=481
Made efforts to make your home more energy efficient	25%	N=121	75%	N=357	100%	N=478
Observed a code violation or other hazard in Cañon City (weeds, abandoned buildings, etc.)	31%	N=149	69%	N=328	100%	N=477
Household member was a victim of a crime in Cañon City	82%	N=389	18%	N=88	100%	N=477
Reported a crime to the police in Cañon City	69%	N=331	31%	N=149	100%	N=480
Stocked supplies in preparation for an emergency	70%	N=335	30%	N=144	100%	N=479
Campaigned or advocated for an issue, cause or candidate	70%	N=336	30%	N=142	100%	N=478
Contacted the City of Cañon City (in-person, phone, email or web) for help or information	57%	N=273	43%	N=208	100%	N=481
Contacted Cañon City elected officials (in-person, phone, email or web) to express your opinion	79%	N=379	21%	N=100	100%	N=479

Table 8: Question 8

In the last 12 months, about how many times, if at all, have you or other household members done each of the following in Cañon City?	2 times a week or more		2-4 times a month		Once a month or less		Not at all		Total	
Used Cañon City recreation centers or their services	19%	N=89	17%	N=80	27%	N=126	37%	N=175	100%	N=470
Visited a neighborhood park or City park	23%	N=111	36%	N=173	32%	N=154	9%	N=42	100%	N=480
Used Cañon City public libraries or their services	6%	N=30	23%	N=108	33%	N=159	38%	N=180	100%	N=477
Participated in religious or spiritual activities in Cañon City	15%	N=70	18%	N=84	12%	N=56	56%	N=266	100%	N=475
Attended a City-sponsored event	4%	N=19	13%	N=61	49%	N=232	34%	N=161	100%	N=473
Carpooled with other adults or children instead of driving alone	11%	N=52	15%	N=72	15%	N=69	60%	N=284	100%	N=477
Walked or biked instead of driving	17%	N=82	15%	N=69	24%	N=116	44%	N=207	100%	N=474
Volunteered your time to some group/activity in Cañon City	10%	N=48	17%	N=78	24%	N=113	50%	N=235	100%	N=474
Participated in a club	7%	N=31	13%	N=60	15%	N=72	66%	N=310	100%	N=473
Talked to or visited with your immediate neighbors	44%	N=210	31%	N=147	19%	N=89	7%	N=33	100%	N=479
Done a favor for a neighbor	26%	N=124	23%	N=110	35%	N=169	16%	N=77	100%	N=480

Table 9: Question 9

Thinking about local public meetings (of local elected officials like City Council or County Commissioners, advisory boards, town halls, HOA, neighborhood watch, etc.), in the last 12 months, about how many times, if at all, have you or other household members attended or watched a local public meeting?	2 times a week or more		2-4 times a month		Once a month or less		Not at all		Total	
Attended a local public meeting	0%	N=2	2%	N=11	23%	N=108	75%	N=358	100%	N=479
Watched (online or on television) a local public meeting	2%	N=12	4%	N=17	16%	N=75	78%	N=373	100%	N=477

Table 10: Question 10

Please rate the quality of each of the following services in Cañon City:	Excellent		Good		Fair		Poor		Total	
Police services	12%	N=53	44%	N=194	28%	N=124	15%	N=66	100%	N=437
Fire services	44%	N=178	43%	N=175	11%	N=45	2%	N=10	100%	N=408
Ambulance or emergency medical services	30%	N=116	49%	N=194	18%	N=70	4%	N=15	100%	N=395
Crime prevention	6%	N=25	34%	N=136	41%	N=162	18%	N=72	100%	N=395
Fire prevention and education	19%	N=66	48%	N=166	25%	N=89	8%	N=29	100%	N=349
Traffic enforcement	5%	N=20	39%	N=158	34%	N=140	22%	N=90	100%	N=407
Street repair	2%	N=11	8%	N=39	25%	N=117	64%	N=295	100%	N=462

The National Citizen Survey™

Please rate the quality of each of the following services in Cañon City:	Excellent		Good		Fair		Poor		Total	
Street cleaning	5%	N=22	28%	N=125	38%	N=174	30%	N=134	100%	N=455
Street lighting	4%	N=19	35%	N=160	42%	N=196	19%	N=87	100%	N=462
Snow removal	5%	N=21	34%	N=141	36%	N=151	25%	N=107	100%	N=420
Sidewalk maintenance	2%	N=11	14%	N=63	31%	N=133	52%	N=229	100%	N=436
Traffic signal timing	1%	N=6	16%	N=74	31%	N=147	52%	N=243	100%	N=469
Garbage collection	26%	N=119	55%	N=256	14%	N=63	6%	N=27	100%	N=465
Recycling	13%	N=53	30%	N=127	29%	N=120	29%	N=120	100%	N=421
Yard waste pick-up	9%	N=32	30%	N=106	31%	N=111	30%	N=105	100%	N=353
Storm drainage	4%	N=17	28%	N=114	34%	N=140	34%	N=141	100%	N=412
Drinking water	16%	N=73	45%	N=208	26%	N=119	14%	N=63	100%	N=463
Sewer services	14%	N=62	54%	N=232	28%	N=120	3%	N=14	100%	N=429
Power (electric and/or gas) utility	14%	N=67	49%	N=231	26%	N=122	11%	N=51	100%	N=471
Utility billing	11%	N=51	48%	N=216	28%	N=124	13%	N=61	100%	N=451
City parks	30%	N=140	48%	N=221	19%	N=87	4%	N=17	100%	N=464
Recreation programs or classes	16%	N=52	38%	N=124	33%	N=107	13%	N=41	100%	N=324
Recreation centers or facilities	10%	N=37	31%	N=108	34%	N=119	25%	N=90	100%	N=354
Land use, planning and zoning	2%	N=7	14%	N=49	42%	N=148	42%	N=146	100%	N=350
Code enforcement (weeds, abandoned buildings, etc.)	3%	N=10	15%	N=60	30%	N=116	52%	N=205	100%	N=392
Animal control	11%	N=43	36%	N=141	33%	N=129	19%	N=75	100%	N=388
Economic development	2%	N=7	12%	N=49	39%	N=154	47%	N=189	100%	N=399
Health services	4%	N=19	31%	N=135	39%	N=171	25%	N=111	100%	N=436
Public library services	28%	N=113	50%	N=199	19%	N=76	2%	N=10	100%	N=397
Public information services	10%	N=34	38%	N=134	38%	N=135	15%	N=52	100%	N=355
Cable television	4%	N=15	20%	N=70	41%	N=144	34%	N=119	100%	N=349
Emergency preparedness (services that prepare the community for natural disasters or other emergency situations)	7%	N=18	22%	N=56	43%	N=110	28%	N=70	100%	N=254
Preservation of natural areas such as open space, farmlands and greenbelts	10%	N=39	35%	N=138	37%	N=143	18%	N=68	100%	N=388
Cañon City open space	13%	N=50	34%	N=134	38%	N=152	15%	N=61	100%	N=396
City-sponsored special events	10%	N=39	36%	N=143	38%	N=151	16%	N=62	100%	N=395
Overall customer service by Cañon City employees (police, receptionists, planners, etc.)	9%	N=38	38%	N=162	35%	N=148	18%	N=74	100%	N=421
Building services (building permits, inspections, plan review, etc.)	2%	N=6	25%	N=74	26%	N=77	47%	N=137	100%	N=294

Table 11: Question 11

Overall, how would you rate the quality of the services provided by each of the following?	Excellent		Good		Fair		Poor		Total	
The City of Cañon City	4%	N=18	39%	N=171	38%	N=168	19%	N=83	100%	N=440
The Federal Government	3%	N=10	28%	N=106	50%	N=191	20%	N=76	100%	N=383
Fremont County	5%	N=19	36%	N=150	38%	N=160	21%	N=90	100%	N=419

The National Citizen Survey™

Table 12: Question 12

Please rate the following categories of Cañon City government performance:	Excellent		Good		Fair		Poor		Total	
The value of services for the taxes paid to Cañon City	2%	N=10	24%	N=103	39%	N=167	35%	N=148	100%	N=428
The overall direction that Cañon City is taking	1%	N=5	23%	N=97	37%	N=155	39%	N=161	100%	N=418
The job Cañon City government does at welcoming citizen involvement	3%	N=10	19%	N=71	43%	N=161	36%	N=135	100%	N=376
Overall confidence in Cañon City government	1%	N=3	18%	N=78	36%	N=158	45%	N=197	100%	N=436
Generally acting in the best interest of the community	2%	N=11	18%	N=77	39%	N=167	41%	N=178	100%	N=433
Being honest	1%	N=5	18%	N=72	36%	N=144	45%	N=180	100%	N=402
Treating all residents fairly	2%	N=8	20%	N=79	33%	N=127	45%	N=173	100%	N=387

Table 13: Question 13

Please rate how important, if at all, you think it is for the Cañon City community to focus on each of the following in the coming two years:	Essential		Very important		Somewhat important		Not at all important		Total	
Overall feeling of safety in Cañon City	41%	N=193	45%	N=216	12%	N=57	2%	N=10	100%	N=476
Overall ease of getting to the places you usually have to visit	20%	N=95	56%	N=265	21%	N=101	3%	N=12	100%	N=474
Quality of overall natural environment in Cañon City	29%	N=139	46%	N=218	21%	N=100	3%	N=15	100%	N=472
Overall "built environment" of Cañon City (including overall design, buildings and parks)	24%	N=116	46%	N=219	25%	N=118	4%	N=20	100%	N=473
Health and wellness opportunities in Cañon City	33%	N=156	47%	N=223	17%	N=78	3%	N=16	100%	N=473
Overall opportunities for education and enrichment	34%	N=161	44%	N=209	20%	N=93	3%	N=12	100%	N=476
Overall economic health of Cañon City	49%	N=231	42%	N=201	8%	N=36	1%	N=5	100%	N=473
Sense of community	32%	N=149	47%	N=224	19%	N=89	2%	N=11	100%	N=474

Table 14: Question 14

Deer hunting by archery is currently legal in Cañon City. To what extent would you support or oppose the Division of Wildlife designating Cañon City and adjacent areas for additional deer hunting archery licenses only by hunters that will meet Division of Wildlife hunter competency and safety guidelines, starting in 2019?	Percent	Number
Strongly support	47%	N=205
Somewhat support	24%	N=105
Somewhat oppose	11%	N=49
Strongly oppose	19%	N=82
Total	100%	N=441

Table 15: Question 15

To what extent would you support or oppose using a half-cent sales tax increase to help finance the construction of a new recreation/aquatic community center, with additional funding coming from public and private partners?	Percent	Number
Strongly support	39%	N=177
Somewhat support	26%	N=118
Somewhat oppose	11%	N=48
Strongly oppose	24%	N=110
Total	100%	N=452

The National Citizen Survey™

Table 16: Question 16

To what extent you would support or oppose creating a stormwater organization to fund and operate stormwater flooding prevention and control:	Strongly support		Somewhat support		Somewhat oppose		Strongly oppose		Total	
Only within Cañon City	27%	N=101	38%	N=143	15%	N=57	21%	N=78	100%	N=379
Within Cañon City and adjacent areas of Fremont County	29%	N=114	41%	N=159	12%	N=47	18%	N=72	100%	N=392

Table 17: Question 17

If a stormwater organization were to be created, what would be your MOST preferred method of funding the entity? (Please select only one response.)	Percent	Number
Monthly impervious surface fee for property owners	18%	N=74
Property tax increase	31%	N=127
Sales tax increase	51%	N=207
Total	100%	N=408

Table 18: Question 18

To what extent you would support or oppose a City lodging tax increase from 2% to 5% for visitors and guests staying at city hotel, motel and lodging accommodations, to be used exclusively for promoting and marketing tourism and special events in the Cañon City and Royal Gorge Region? This 5% tax in the city would replace the existing 2% lodging tax.	Percent	Number
Strongly support	30%	N=133
Somewhat support	29%	N=130
Somewhat oppose	11%	N=47
Strongly oppose	31%	N=138
Total	100%	N=447

Table 19: Question 19

To what extent you would support or oppose the adoption of zoning and special review conditions to permit each of the following in the City, but not in the downtown:	Strongly support		Somewhat support		Somewhat oppose		Strongly oppose		Total	
The sale of recreational marijuana in commercial zones	31%	N=141	16%	N=74	6%	N=30	47%	N=216	100%	N=461
The cultivation of recreational marijuana in commercial zones	26%	N=121	15%	N=68	9%	N=41	50%	N=230	100%	N=459

Table 20: Question 20

If the City were to permit the cultivation and sale of recreational marijuana in the City, what would be your MOST preferred use of marijuana sales tax revenue? (Please select only one response.)	Percent	Number
New recreation and aquatic center	27%	N=114
Parks improvements	6%	N=24
Stormwater capital improvements	12%	N=50
Special events/festivals	4%	N=18
Law enforcement/substance abuse treatment/homelessness	36%	N=153
Some other use/none of these	15%	N=64
Total	100%	N=423

The National Citizen Survey™

Table 21: Question 21

To what extent would you support or oppose the City acquiring available for sale property adjacent to the Arkansas River to enhance river access, parking, recreation, retail, restaurants and residences?	Percent	Number
Strongly support	34%	N=154
Somewhat support	33%	N=149
Somewhat oppose	11%	N=49
Strongly oppose	22%	N=98
Total	100%	N=450

Table 22: Question 22

Should the City seek public or private partners to renovate the downtown St. Cloud Hotel, or repurpose the hotel as a mixed-use restaurant, residential and commercial building?	Percent	Number
Refurbish the hotel	31%	N=133
Repurpose the hotel	44%	N=186
Neither of these/do something else	15%	N=65
Do nothing	10%	N=42
Total	100%	N=427

Table 23: Question 23

To what extent would you support or oppose the City exploring development of additional playgrounds and lighted multi-sport fields in the City?	Percent	Number
Strongly support	39%	N=173
Somewhat support	40%	N=179
Somewhat oppose	11%	N=50
Strongly oppose	9%	N=40
Total	100%	N=443

Table 24: Question 24

Currently, the Mayor is only permitted to vote in the case of a tie. Should the City Charter be amended to permit the Mayor the right to vote on all City Council matters?	Percent	Number
Yes	52%	N=202
No	48%	N=190
Total	100%	N=392

Table 25: Question 25

To what extent do you agree or disagree that City Hall is a place where you can have your questions answered?	Percent	Number
Strongly agree	19%	N=67
Somewhat agree	46%	N=166
Somewhat disagree	21%	N=74
Strongly disagree	15%	N=54
Total	100%	N=361

The National Citizen Survey™

Table 26: Question 26

Have you had any in-person, phone or email contact with an employee of Cañon City within the last 12 months (including police, receptionists, planners or any others)?	Percent	Number
No	37%	N=169
Yes	63%	N=289
Total	100%	N=458

Table 27: Question 27

What was your impression of the employee(s) of Cañon City in your most recent contact? (Rate each characteristic below.)	Excellent		Good		Fair		Poor		Total	
Knowledge	32%	N=91	45%	N=128	15%	N=43	8%	N=23	100%	N=286
Responsiveness	34%	N=97	34%	N=98	19%	N=54	13%	N=38	100%	N=287
Courtesy	38%	N=110	37%	N=106	15%	N=43	10%	N=27	100%	N=286
Customer service impression	33%	N=93	39%	N=110	13%	N=37	16%	N=45	100%	N=285

Asked only of those who reported having had contact with a City employee

Table 28: Question 28

Work was recently completed on the 2017 2A street improvement project, which included improvements to 1st Street/Mariposa Road, 10th Street, 16th Street, Greenwood Avenue, South Street, Yale Place (North/South), Fairview Avenue and Whipple Avenue. Now that the first year's work is complete, how would you rate the overall quality of the 2017 2A street improvement project?	Percent	Number
Excellent	17%	N=70
Good	44%	N=180
Fair	27%	N=110
Poor	13%	N=51
Total	100%	N=411

Table 29: Question 29

To what extent would you support or oppose eliminating the frontage roads along US Highway 50 between 15th St. and Reynolds Avenue to improve access to local businesses, aesthetics, and traffic signal operations?	Percent	Number
Strongly support	28%	N=124
Somewhat support	25%	N=108
Somewhat oppose	15%	N=68
Strongly oppose	31%	N=137
Total	100%	N=436

Table 30: Question 30

To what extent would you support or oppose reducing the downtown speed limit (on Main St. between 1st St. and 9th St.) from 25 miles per hour to 15 miles per hour?	Percent	Number
Strongly support	27%	N=124
Somewhat support	22%	N=105
Somewhat oppose	21%	N=97
Strongly oppose	30%	N=140
Total	100%	N=466

The National Citizen Survey™

Table 31: Question D1

How often, if at all, do you do each of the following, considering all of the times you could?	Never		Rarely		Sometimes		Usually		Always		Total	
Recycle at home	16%	N=74	18%	N=83	23%	N=111	20%	N=95	24%	N=112	100%	N=475
Purchase goods or services from a business located in Cañon City	2%	N=11	5%	N=22	16%	N=74	58%	N=276	19%	N=91	100%	N=475
Eat at least 5 portions of fruits and vegetables a day	5%	N=25	20%	N=97	35%	N=167	27%	N=130	12%	N=55	100%	N=474
Participate in moderate or vigorous physical activity	6%	N=27	13%	N=60	34%	N=157	33%	N=155	15%	N=70	100%	N=469
Read or watch local news (via television, paper, computer, etc.)	10%	N=46	14%	N=68	16%	N=75	31%	N=149	29%	N=135	100%	N=473
Vote in local elections	9%	N=43	3%	N=13	6%	N=31	23%	N=111	58%	N=277	100%	N=475

Table 32: Question D2

Would you say that in general your health is:	Percent	Number
Excellent	14%	N=66
Very good	36%	N=168
Good	37%	N=176
Fair	10%	N=48
Poor	3%	N=14
Total	100%	N=473

Table 33: Question D3

What impact, if any, do you think the economy will have on your family income in the next 6 months? Do you think the impact will be:	Percent	Number
Very positive	7%	N=33
Somewhat positive	21%	N=98
Neutral	46%	N=219
Somewhat negative	20%	N=96
Very negative	5%	N=26
Total	100%	N=472

Table 34: Question D4

What is your employment status?	Percent	Number
Working full time for pay	48%	N=228
Working part time for pay	7%	N=33
Unemployed, looking for paid work	5%	N=22
Unemployed, not looking for paid work	4%	N=18
Fully retired	36%	N=171
Total	100%	N=472

Table 35: Question D5

Do you work inside the boundaries of Cañon City?	Percent	Number
Yes, outside the home	38%	N=172
Yes, from home	5%	N=25
No	57%	N=258
Total	100%	N=455

The National Citizen Survey™

Table 36: Question D6

How many years have you lived in Cañon City?	Percent	Number
Less than 2 years	15%	N=71
2 to 5 years	14%	N=65
6 to 10 years	14%	N=65
11 to 20 years	22%	N=105
More than 20 years	36%	N=169
Total	100%	N=475

Table 37: Question D7

Which best describes the building you live in?	Percent	Number
One family house detached from any other houses	71%	N=338
Building with two or more homes (duplex, townhome, apartment or condominium)	22%	N=104
Mobile home	5%	N=23
Other	2%	N=9
Total	100%	N=474

Table 38: Question D8

Is this house, apartment or mobile home...	Percent	Number
Rented	33%	N=154
Owned	67%	N=316
Total	100%	N=470

Table 39: Question D9

About how much is your monthly housing cost for the place you live (including rent, mortgage payment, property tax, property insurance and homeowners' association (HOA) fees)?	Percent	Number
Less than \$300 per month	10%	N=46
\$300 to \$599 per month	20%	N=90
\$600 to \$999 per month	40%	N=183
\$1,000 to \$1,499 per month	17%	N=76
\$1,500 to \$2,499 per month	11%	N=51
\$2,500 or more per month	2%	N=8
Total	100%	N=454

Table 40: Question D10

Do any children 17 or under live in your household?	Percent	Number
No	72%	N=338
Yes	28%	N=134
Total	100%	N=473

The National Citizen Survey™

Table 41: Question D11

Are you or any other members of your household aged 65 or older?	Percent	Number
No	62%	N=293
Yes	38%	N=179
Total	100%	N=472

Table 42: Question D12

How much do you anticipate your household's total income before taxes will be for the current year? (Please include in your total income money from all sources for all persons living in your household.)	Percent	Number
Less than \$25,000	22%	N=98
\$25,000 to \$49,999	35%	N=156
\$50,000 to \$99,999	31%	N=139
\$100,000 to \$149,999	8%	N=38
\$150,000 or more	4%	N=19
Total	100%	N=450

Table 43: Question D13

Are you Spanish, Hispanic or Latino?	Percent	Number
No, not Spanish, Hispanic or Latino	95%	N=443
Yes, I consider myself to be Spanish, Hispanic or Latino	5%	N=22
Total	100%	N=465

Table 44: Question D14

What is your race? (Mark one or more races to indicate what race(s) you consider yourself to be.)	Percent	Number
American Indian or Alaskan Native	2%	N=9
Asian, Asian Indian or Pacific Islander	1%	N=4
Black or African American	0%	N=0
White	94%	N=436
Other	5%	N=25

Total may exceed 100% as respondents could select more than one option.

Table 45: Question D15

In which category is your age?	Percent	Number
18 to 24 years	1%	N=3
25 to 34 years	22%	N=103
35 to 44 years	13%	N=63
45 to 54 years	18%	N=84
55 to 64 years	13%	N=62
65 to 74 years	17%	N=80
75 years or older	16%	N=77
Total	100%	N=472

The National Citizen Survey™

Table 46: Question D16

What is your sex?	Percent	Number
Female	54%	N=253
Male	46%	N=214
Total	100%	N=467

Table 47: Question D17

Do you consider a cell phone or landline your primary telephone number?	Percent	Number
Cell	68%	N=319
Land line	20%	N=96
Both	12%	N=56
Total	100%	N=472

Responses including “don’t know”

The following pages contain a complete set of responses to each question on the survey, including the “don’t know” responses. The percent of respondents giving a particular response is shown followed by the number of respondents (denoted with “N=”).

Table 48: Question 1

Please rate each of the following aspects of quality of life in Cañon City:	Excellent		Good		Fair		Poor		Don't know		Total	
Cañon City as a place to live	14%	N=64	54%	N=256	27%	N=129	5%	N=24	0%	N=2	100%	N=475
Your neighborhood as a place to live	21%	N=101	49%	N=238	25%	N=119	5%	N=23	0%	N=1	100%	N=482
Cañon City as a place to raise children	10%	N=49	37%	N=177	29%	N=137	9%	N=42	15%	N=71	100%	N=477
Cañon City as a place to work	5%	N=24	19%	N=91	28%	N=132	35%	N=165	13%	N=62	100%	N=474
Cañon City as a place to visit	26%	N=123	37%	N=174	28%	N=133	7%	N=34	3%	N=13	100%	N=477
Cañon City as a place to retire	22%	N=105	42%	N=199	21%	N=100	8%	N=38	7%	N=34	100%	N=476
The overall quality of life in Cañon City	9%	N=45	50%	N=237	33%	N=159	7%	N=32	1%	N=4	100%	N=477

Table 49: Question 2

Please rate each of the following characteristics as they relate to Cañon City as a whole:	Excellent		Good		Fair		Poor		Don't know		Total	
Overall feeling of safety in Cañon City	12%	N=57	50%	N=241	29%	N=138	8%	N=37	1%	N=6	100%	N=478
Overall ease of getting to the places you usually have to visit	13%	N=61	49%	N=237	25%	N=119	13%	N=63	0%	N=1	100%	N=481
Quality of overall natural environment in Cañon City	24%	N=113	52%	N=250	19%	N=89	5%	N=24	0%	N=1	100%	N=478
Overall "built environment" of Cañon City (including overall design, buildings and parks)	8%	N=39	35%	N=169	35%	N=169	20%	N=96	1%	N=4	100%	N=478
Health and wellness opportunities in Cañon City	11%	N=50	29%	N=137	36%	N=173	21%	N=101	3%	N=14	100%	N=477
Overall opportunities for education and enrichment	5%	N=23	24%	N=115	43%	N=206	21%	N=97	7%	N=34	100%	N=475
Overall economic health of Cañon City	2%	N=9	17%	N=82	46%	N=218	31%	N=147	4%	N=20	100%	N=476
Sense of community	3%	N=15	32%	N=149	42%	N=197	22%	N=104	1%	N=6	100%	N=470
Overall image or reputation of Cañon City	3%	N=15	27%	N=128	40%	N=190	27%	N=129	3%	N=15	100%	N=477

Table 50: Question 3

Please indicate how likely or unlikely you are to do each of the following:	Very likely		Somewhat likely		Somewhat unlikely		Very unlikely		Don't know		Total	
Recommend living in Cañon City to someone who asks	22%	N=107	46%	N=220	15%	N=74	16%	N=76	0%	N=2	100%	N=479
Remain in Cañon City for the next five years	51%	N=245	29%	N=140	9%	N=43	8%	N=36	3%	N=13	100%	N=476

Table 51: Question 4

Please rate how safe or unsafe you feel:	Very safe		Somewhat safe		Neither safe nor unsafe		Somewhat unsafe		Very unsafe		Don't know		Total	
In your neighborhood during the day	59%	N=286	28%	N=133	8%	N=39	3%	N=13	2%	N=10	0%	N=2	100%	N=484
In Cañon City's downtown/commercial area during the day	46%	N=224	37%	N=177	8%	N=37	5%	N=24	2%	N=10	2%	N=10	100%	N=483

The National Citizen Survey™

Table 52: Question 5

Please rate each of the following characteristics as they relate to Cañon City as a whole:	Excellent		Good		Fair		Poor		Don't know		Total	
Traffic flow on major streets	3%	N=13	27%	N=127	38%	N=182	33%	N=156	0%	N=1	100%	N=479
Ease of public parking	5%	N=26	30%	N=146	37%	N=176	26%	N=124	2%	N=8	100%	N=479
Ease of travel by car in Cañon City	7%	N=35	41%	N=193	38%	N=182	14%	N=65	1%	N=3	100%	N=478
Ease of travel by bicycle in Cañon City	6%	N=28	21%	N=97	25%	N=117	21%	N=99	26%	N=121	100%	N=461
Availability of paths and walking trails	28%	N=135	39%	N=187	19%	N=92	8%	N=39	5%	N=22	100%	N=475
Air quality	26%	N=123	58%	N=277	10%	N=47	5%	N=26	1%	N=7	100%	N=481
Cleanliness of Cañon City	9%	N=43	47%	N=225	32%	N=156	12%	N=58	0%	N=2	100%	N=483
Overall appearance of Cañon City	7%	N=32	40%	N=192	36%	N=175	17%	N=81	0%	N=1	100%	N=481
Public places where people want to spend time	11%	N=52	36%	N=173	37%	N=179	12%	N=60	3%	N=17	100%	N=481
Variety of housing options	5%	N=23	13%	N=62	31%	N=146	47%	N=223	5%	N=23	100%	N=477
Availability of affordable quality housing	2%	N=8	12%	N=59	33%	N=156	47%	N=226	6%	N=27	100%	N=477
Fitness opportunities (including exercise classes and paths or trails, etc.)	16%	N=78	45%	N=214	29%	N=139	6%	N=28	4%	N=18	100%	N=477
Recreational opportunities	20%	N=98	36%	N=172	28%	N=133	12%	N=57	4%	N=20	100%	N=480
Availability of affordable quality food	8%	N=40	37%	N=175	34%	N=163	21%	N=99	0%	N=2	100%	N=479
Availability of affordable quality health care	3%	N=16	23%	N=108	40%	N=192	27%	N=130	6%	N=29	100%	N=475
Availability of preventive health services	4%	N=17	22%	N=107	38%	N=181	27%	N=129	9%	N=43	100%	N=477
Availability of affordable quality mental health care	2%	N=10	13%	N=63	26%	N=121	30%	N=139	29%	N=135	100%	N=467
Overall condition of City streets	1%	N=4	11%	N=53	26%	N=126	61%	N=294	0%	N=2	100%	N=478

Table 53: Question 6

Please rate each of the following characteristics as they relate to Cañon City as a whole:	Excellent		Good		Fair		Poor		Don't know		Total	
Availability of affordable quality child care/preschool	1%	N=5	9%	N=41	18%	N=84	18%	N=83	54%	N=254	100%	N=468
K-12 education	4%	N=17	30%	N=143	27%	N=126	9%	N=41	31%	N=147	100%	N=473
Adult educational opportunities	4%	N=18	19%	N=92	37%	N=175	17%	N=83	22%	N=106	100%	N=473
Opportunities to attend cultural/arts/music activities	7%	N=32	32%	N=149	38%	N=177	14%	N=67	10%	N=45	100%	N=470
Opportunities to participate in religious or spiritual events and activities	16%	N=75	39%	N=183	20%	N=91	6%	N=28	19%	N=88	100%	N=466
Employment opportunities	1%	N=4	10%	N=45	31%	N=146	47%	N=221	12%	N=57	100%	N=472
Shopping opportunities	3%	N=15	12%	N=60	39%	N=186	44%	N=211	2%	N=8	100%	N=480
Cost of living in Cañon City	7%	N=31	25%	N=117	41%	N=194	27%	N=126	1%	N=5	100%	N=474
Overall quality of business and service establishments in Cañon City	2%	N=12	31%	N=149	42%	N=200	24%	N=114	1%	N=5	100%	N=479
Vibrant downtown/commercial area	1%	N=5	20%	N=95	39%	N=184	38%	N=183	2%	N=10	100%	N=477
Overall quality of new development in Cañon City	2%	N=7	15%	N=70	31%	N=147	43%	N=202	9%	N=43	100%	N=468
Opportunities to participate in social events and activities	8%	N=39	39%	N=188	31%	N=149	12%	N=57	9%	N=44	100%	N=477
Opportunities to volunteer	11%	N=52	39%	N=186	22%	N=104	7%	N=34	21%	N=99	100%	N=474
Opportunities to participate in community matters	8%	N=36	29%	N=136	28%	N=130	14%	N=66	21%	N=96	100%	N=465
Openness and acceptance of the community toward people of diverse backgrounds	3%	N=16	19%	N=92	32%	N=152	32%	N=151	13%	N=63	100%	N=475
Neighborliness of residents in Cañon City	7%	N=34	33%	N=155	41%	N=193	18%	N=84	2%	N=8	100%	N=474

The National Citizen Survey™

Table 54: Question 7

Please indicate whether or not you have done each of the following in the last 12 months.	No		Yes		Total	
Made efforts to conserve water	15%	N=73	85%	N=408	100%	N=481
Made efforts to make your home more energy efficient	25%	N=121	75%	N=357	100%	N=478
Observed a code violation or other hazard in Cañon City (weeds, abandoned buildings, etc.)	31%	N=149	69%	N=328	100%	N=477
Household member was a victim of a crime in Cañon City	82%	N=389	18%	N=88	100%	N=477
Reported a crime to the police in Cañon City	69%	N=331	31%	N=149	100%	N=480
Stocked supplies in preparation for an emergency	70%	N=335	30%	N=144	100%	N=479
Campaigned or advocated for an issue, cause or candidate	70%	N=336	30%	N=142	100%	N=478
Contacted the City of Cañon City (in-person, phone, email or web) for help or information	57%	N=273	43%	N=208	100%	N=481
Contacted Cañon City elected officials (in-person, phone, email or web) to express your opinion	79%	N=379	21%	N=100	100%	N=479

Table 55: Question 8

In the last 12 months, about how many times, if at all, have you or other household members done each of the following in Cañon City?	2 times a week or more		2-4 times a month		Once a month or less		Not at all		Total	
Used Cañon City recreation centers or their services	19%	N=89	17%	N=80	27%	N=126	37%	N=175	100%	N=470
Visited a neighborhood park or City park	23%	N=111	36%	N=173	32%	N=154	9%	N=42	100%	N=480
Used Cañon City public libraries or their services	6%	N=30	23%	N=108	33%	N=159	38%	N=180	100%	N=477
Participated in religious or spiritual activities in Cañon City	15%	N=70	18%	N=84	12%	N=56	56%	N=266	100%	N=475
Attended a City-sponsored event	4%	N=19	13%	N=61	49%	N=232	34%	N=161	100%	N=473
Carpooled with other adults or children instead of driving alone	11%	N=52	15%	N=72	15%	N=69	60%	N=284	100%	N=477
Walked or biked instead of driving	17%	N=82	15%	N=69	24%	N=116	44%	N=207	100%	N=474
Volunteered your time to some group/activity in Cañon City	10%	N=48	17%	N=78	24%	N=113	50%	N=235	100%	N=474
Participated in a club	7%	N=31	13%	N=60	15%	N=72	66%	N=310	100%	N=473
Talked to or visited with your immediate neighbors	44%	N=210	31%	N=147	19%	N=89	7%	N=33	100%	N=479
Done a favor for a neighbor	26%	N=124	23%	N=110	35%	N=169	16%	N=77	100%	N=480

Table 56: Question 9

Thinking about local public meetings (of local elected officials like City Council or County Commissioners, advisory boards, town halls, HOA, neighborhood watch, etc.), in the last 12 months, about how many times, if at all, have you or other household members attended or watched a local public meeting?	2 times a week or more		2-4 times a month		Once a month or less		Not at all		Total	
Attended a local public meeting	0%	N=2	2%	N=11	23%	N=108	75%	N=358	100%	N=479
Watched (online or on television) a local public meeting	2%	N=12	4%	N=17	16%	N=75	78%	N=373	100%	N=477

Table 57: Question 10

Please rate the quality of each of the following services in Cañon City:	Excellent		Good		Fair		Poor		Don't know		Total	
Police services	11%	N=53	41%	N=194	26%	N=124	14%	N=66	8%	N=38	100%	N=474
Fire services	38%	N=178	37%	N=175	9%	N=45	2%	N=10	14%	N=64	100%	N=472
Ambulance or emergency medical services	25%	N=116	41%	N=194	15%	N=70	3%	N=15	17%	N=80	100%	N=475
Crime prevention	5%	N=25	29%	N=136	35%	N=162	15%	N=72	16%	N=73	100%	N=468
Fire prevention and education	14%	N=66	35%	N=166	19%	N=89	6%	N=29	25%	N=118	100%	N=467
Traffic enforcement	4%	N=20	34%	N=158	30%	N=140	19%	N=90	13%	N=60	100%	N=467
Street repair	2%	N=11	8%	N=39	25%	N=117	62%	N=295	3%	N=12	100%	N=474

The National Citizen Survey™

Please rate the quality of each of the following services in Cañon City:	Excellent		Good		Fair		Poor		Don't know		Total	
Street cleaning	5%	N=22	26%	N=125	37%	N=174	28%	N=134	4%	N=20	100%	N=475
Street lighting	4%	N=19	34%	N=160	42%	N=196	19%	N=87	1%	N=3	100%	N=465
Snow removal	4%	N=21	30%	N=141	32%	N=151	23%	N=107	11%	N=50	100%	N=470
Sidewalk maintenance	2%	N=11	13%	N=63	28%	N=133	48%	N=229	8%	N=38	100%	N=474
Traffic signal timing	1%	N=6	16%	N=74	31%	N=147	51%	N=243	1%	N=6	100%	N=475
Garbage collection	25%	N=119	54%	N=256	13%	N=63	6%	N=27	2%	N=9	100%	N=474
Recycling	11%	N=53	27%	N=127	25%	N=120	25%	N=120	12%	N=55	100%	N=476
Yard waste pick-up	7%	N=32	23%	N=106	24%	N=111	22%	N=105	25%	N=116	100%	N=470
Storm drainage	4%	N=17	24%	N=114	29%	N=140	30%	N=141	13%	N=63	100%	N=475
Drinking water	15%	N=73	44%	N=208	25%	N=119	13%	N=63	2%	N=9	100%	N=472
Sewer services	13%	N=62	49%	N=232	25%	N=120	3%	N=14	9%	N=42	100%	N=471
Power (electric and/or gas) utility	14%	N=67	49%	N=231	26%	N=122	11%	N=51	1%	N=3	100%	N=474
Utility billing	11%	N=51	46%	N=216	26%	N=124	13%	N=61	4%	N=18	100%	N=469
City parks	30%	N=140	47%	N=221	18%	N=87	4%	N=17	2%	N=9	100%	N=473
Recreation programs or classes	11%	N=52	26%	N=124	23%	N=107	9%	N=41	31%	N=147	100%	N=471
Recreation centers or facilities	8%	N=37	23%	N=108	25%	N=119	19%	N=90	25%	N=117	100%	N=470
Land use, planning and zoning	2%	N=7	11%	N=49	32%	N=148	31%	N=146	25%	N=116	100%	N=466
Code enforcement (weeds, abandoned buildings, etc.)	2%	N=10	13%	N=60	24%	N=116	43%	N=205	17%	N=83	100%	N=474
Animal control	9%	N=43	30%	N=141	27%	N=129	16%	N=75	18%	N=83	100%	N=471
Economic development	1%	N=7	10%	N=49	33%	N=154	40%	N=189	15%	N=72	100%	N=471
Health services	4%	N=19	29%	N=135	36%	N=171	24%	N=111	7%	N=34	100%	N=470
Public library services	24%	N=113	42%	N=199	16%	N=76	2%	N=10	16%	N=77	100%	N=474
Public information services	7%	N=34	29%	N=134	29%	N=135	11%	N=52	24%	N=112	100%	N=466
Cable television	3%	N=15	15%	N=70	30%	N=144	25%	N=119	27%	N=126	100%	N=475
Emergency preparedness (services that prepare the community for natural disasters or other emergency situations)	4%	N=18	12%	N=56	23%	N=110	15%	N=70	46%	N=216	100%	N=470
Preservation of natural areas such as open space, farmlands and greenbelts	8%	N=39	30%	N=138	31%	N=143	15%	N=68	17%	N=77	100%	N=465
Cañon City open space	11%	N=50	29%	N=134	32%	N=152	13%	N=61	16%	N=73	100%	N=468
City-sponsored special events	8%	N=39	31%	N=143	33%	N=151	13%	N=62	15%	N=67	100%	N=462
Overall customer service by Cañon City employees (police, receptionists, planners, etc.)	8%	N=38	35%	N=162	31%	N=148	16%	N=74	10%	N=48	100%	N=469
Building services (building permits, inspections, plan review, etc.)	1%	N=6	16%	N=74	16%	N=77	29%	N=137	37%	N=174	100%	N=468

Table 58: Question 11

Overall, how would you rate the quality of the services provided by each of the following?	Excellent		Good		Fair		Poor		Don't know		Total	
The City of Cañon City	4%	N=18	36%	N=171	36%	N=168	18%	N=83	7%	N=34	100%	N=474
The Federal Government	2%	N=10	22%	N=106	40%	N=191	16%	N=76	19%	N=89	100%	N=472
Fremont County	4%	N=19	32%	N=150	34%	N=160	19%	N=90	11%	N=54	100%	N=473

The National Citizen Survey™

Table 59: Question 12

Please rate the following categories of Cañon City government performance:	Excellent		Good		Fair		Poor		Don't know		Total	
The value of services for the taxes paid to Cañon City	2%	N=10	22%	N=103	35%	N=167	31%	N=148	9%	N=44	100%	N=472
The overall direction that Cañon City is taking	1%	N=5	20%	N=97	33%	N=155	34%	N=161	12%	N=56	100%	N=474
The job Cañon City government does at welcoming citizen involvement	2%	N=10	15%	N=71	34%	N=161	28%	N=135	21%	N=99	100%	N=476
Overall confidence in Cañon City government	1%	N=3	16%	N=78	33%	N=158	41%	N=197	8%	N=39	100%	N=475
Generally acting in the best interest of the community	2%	N=11	16%	N=77	35%	N=167	38%	N=178	9%	N=40	100%	N=473
Being honest	1%	N=5	15%	N=72	30%	N=144	38%	N=180	15%	N=71	100%	N=473
Treating all residents fairly	2%	N=8	17%	N=79	27%	N=127	36%	N=173	19%	N=88	100%	N=476

Table 60: Question 13

Please rate how important, if at all, you think it is for the Cañon City community to focus on each of the following in the coming two years:	Essential		Very important		Somewhat important		Not at all important		Total	
Overall feeling of safety in Cañon City	41%	N=193	45%	N=216	12%	N=57	2%	N=10	100%	N=476
Overall ease of getting to the places you usually have to visit	20%	N=95	56%	N=265	21%	N=101	3%	N=12	100%	N=474
Quality of overall natural environment in Cañon City	29%	N=139	46%	N=218	21%	N=100	3%	N=15	100%	N=472
Overall "built environment" of Cañon City (including overall design, buildings and parks)	24%	N=116	46%	N=219	25%	N=118	4%	N=20	100%	N=473
Health and wellness opportunities in Cañon City	33%	N=156	47%	N=223	17%	N=78	3%	N=16	100%	N=473
Overall opportunities for education and enrichment	34%	N=161	44%	N=209	20%	N=93	3%	N=12	100%	N=476
Overall economic health of Cañon City	49%	N=231	42%	N=201	8%	N=36	1%	N=5	100%	N=473
Sense of community	32%	N=149	47%	N=224	19%	N=89	2%	N=11	100%	N=474

Table 61: Question 14

Deer hunting by archery is currently legal in Cañon City. To what extent would you support or oppose the Division of Wildlife designating Cañon City and adjacent areas for additional deer hunting archery licenses only by hunters that will meet Division of Wildlife hunter competency and safety guidelines, starting in 2019?	Percent	Number
Strongly support	43%	N=205
Somewhat support	22%	N=105
Somewhat oppose	10%	N=49
Strongly oppose	17%	N=82
Don't know	7%	N=32
Total	100%	N=473

Table 62: Question 15

To what extent would you support or oppose using a half-cent sales tax increase to help finance the construction of a new recreation/aquatic community center, with additional funding coming from public and private partners?	Percent	Number
Strongly support	37%	N=177
Somewhat support	25%	N=118
Somewhat oppose	10%	N=48
Strongly oppose	23%	N=110
Don't know	6%	N=26
Total	100%	N=479

The National Citizen Survey™

Table 63: Question 16

To what extent you would support or oppose creating a stormwater organization to fund and operate stormwater flooding prevention and control:	Strongly support		Somewhat support		Somewhat oppose		Strongly oppose		Don't know		Total	
Only within Cañon City	22%	N=101	32%	N=143	13%	N=57	17%	N=78	16%	N=74	100%	N=452
Within Cañon City and adjacent areas of Fremont County	25%	N=114	34%	N=159	10%	N=47	16%	N=72	16%	N=73	100%	N=465

Table 64: Question 17

If a stormwater organization were to be created, what would be your MOST preferred method of funding the entity? (Please select only one response.)	Percent	Number
Monthly impervious surface fee for property owners	18%	N=74
Property tax increase	31%	N=127
Sales tax increase	51%	N=207
Total	100%	N=408

Table 65: Question 18

To what extent you would support or oppose a City lodging tax increase from 2% to 5% for visitors and guests staying at city hotel, motel and lodging accommodations, to be used exclusively for promoting and marketing tourism and special events in the Cañon City and Royal Gorge Region? This 5% tax in the city would replace the existing 2% lodging tax.	Percent	Number
Strongly support	28%	N=133
Somewhat support	27%	N=130
Somewhat oppose	10%	N=47
Strongly oppose	29%	N=138
Don't know	6%	N=31
Total	100%	N=478

Table 66: Question 19

To what extent you would support or oppose the adoption of zoning and special review conditions to permit each of the following in the City, but not in the downtown:	Strongly support		Somewhat support		Somewhat oppose		Strongly oppose		Don't know		Total	
The sale of recreational marijuana in commercial zones	30%	N=141	16%	N=74	6%	N=30	45%	N=216	3%	N=15	100%	N=475
The cultivation of recreational marijuana in commercial zones	26%	N=121	14%	N=68	9%	N=41	49%	N=230	3%	N=13	100%	N=472

Table 67: Question 20

If the City were to permit the cultivation and sale of recreational marijuana in the City, what would be your MOST preferred use of marijuana sales tax revenue? (Please select only one response.)	Percent	Number
New recreation and aquatic center	25%	N=114
Parks improvements	5%	N=24
Stormwater capital improvements	11%	N=50
Special events/festivals	4%	N=18
Law enforcement/substance abuse treatment/homelessness	33%	N=153
Some other use/none of these	14%	N=64
Don't know	8%	N=35
Total	100%	N=458

The National Citizen Survey™

Table 68: Question 21

To what extent would you support or oppose the City acquiring available for sale property adjacent to the Arkansas River to enhance river access, parking, recreation, retail, restaurants and residences?	Percent	Number
Strongly support	32%	N=154
Somewhat support	31%	N=149
Somewhat oppose	10%	N=49
Strongly oppose	21%	N=98
Don't know	6%	N=26
Total	100%	N=476

Table 69: Question 22

Should the City seek public or private partners to renovate the downtown St. Cloud Hotel, or repurpose the hotel as a mixed-use restaurant, residential and commercial building?	Percent	Number
Refurbish the hotel	28%	N=133
Repurpose the hotel	39%	N=186
Neither of these/do something else	14%	N=65
Do nothing	9%	N=42
Don't know	10%	N=49
Total	100%	N=475

Table 70: Question 23

To what extent would you support or oppose the City exploring development of additional playgrounds and lighted multi-sport fields in the City?	Percent	Number
Strongly support	37%	N=173
Somewhat support	38%	N=179
Somewhat oppose	11%	N=50
Strongly oppose	9%	N=40
Don't know	6%	N=28
Total	100%	N=470

Table 71: Question 24

Currently, the Mayor is only permitted to vote in the case of a tie. Should the City Charter be amended to permit the Mayor the right to vote on all City Council matters?	Percent	Number
Yes	43%	N=202
No	40%	N=190
Don't know	17%	N=82
Total	100%	N=474

Table 72: Question 25

To what extent do you agree or disagree that City Hall is a place where you can have your questions answered?	Percent	Number
Strongly agree	14%	N=67
Somewhat agree	35%	N=166
Somewhat disagree	16%	N=74
Strongly disagree	11%	N=54
Don't know	24%	N=111
Total	100%	N=472

The National Citizen Survey™

Table 73: Question 26

Have you had any in-person, phone or email contact with an employee of Cañon City within the last 12 months (including police, receptionists, planners or any others)?	Percent	Number
No	37%	N=169
Yes	63%	N=289
Total	100%	N=458

Table 74: Question 27

What was your impression of the employee(s) of Cañon City in your most recent contact? (Rate each characteristic below.)	Excellent		Good		Fair		Poor		Don't know		Total	
Knowledge	32%	N=91	45%	N=128	15%	N=43	8%	N=23	0%	N=0	100%	N=287
Responsiveness	34%	N=97	34%	N=98	19%	N=54	13%	N=38	0%	N=0	100%	N=287
Courtesy	38%	N=110	37%	N=106	15%	N=43	10%	N=27	0%	N=1	100%	N=287
Customer service impression	32%	N=93	39%	N=110	13%	N=37	16%	N=45	0%	N=1	100%	N=286

Asked only of those who reported having had contact with a City employee

Table 75: Question 28

Work was recently completed on the 2017 2A street improvement project, which included improvements to 1 st Street/Mariposa Road, 10 th Street, 16 th Street, Greenwood Avenue, South Street, Yale Place (North/South), Fairview Avenue and Whipple Avenue. Now that the first year's work is complete, how would you rate the overall quality of the 2017 2A street improvement project?	Percent	Number
Excellent	15%	N=70
Good	38%	N=180
Fair	23%	N=110
Poor	11%	N=51
Don't know	14%	N=64
Total	100%	N=475

Table 76: Question 29

To what extent would you support or oppose eliminating the frontage roads along US Highway 50 between 15th St. and Reynolds Avenue to improve access to local businesses, aesthetics, and traffic signal operations?	Percent	Number
Strongly support	26%	N=124
Somewhat support	23%	N=108
Somewhat oppose	14%	N=68
Strongly oppose	29%	N=137
Don't know	8%	N=38
Total	100%	N=474

The National Citizen Survey™

Table 77: Question 30

To what extent would you support or oppose reducing the downtown speed limit (on Main St. between 1st St. and 9th St.) from 25 miles per hour to 15 miles per hour?	Percent	Number
Strongly support	26%	N=124
Somewhat support	22%	N=105
Somewhat oppose	20%	N=97
Strongly oppose	29%	N=140
Don't know	2%	N=10
Total	100%	N=476

Table 78: Question D1

How often, if at all, do you do each of the following, considering all of the times you could?	Never		Rarely		Sometimes		Usually		Always		Total	
Recycle at home	16%	N=74	18%	N=83	23%	N=111	20%	N=95	24%	N=112	100%	N=475
Purchase goods or services from a business located in Cañon City	2%	N=11	5%	N=22	16%	N=74	58%	N=276	19%	N=91	100%	N=475
Eat at least 5 portions of fruits and vegetables a day	5%	N=25	20%	N=97	35%	N=167	27%	N=130	12%	N=55	100%	N=474
Participate in moderate or vigorous physical activity	6%	N=27	13%	N=60	34%	N=157	33%	N=155	15%	N=70	100%	N=469
Read or watch local news (via television, paper, computer, etc.)	10%	N=46	14%	N=68	16%	N=75	31%	N=149	29%	N=135	100%	N=473
Vote in local elections	9%	N=43	3%	N=13	6%	N=31	23%	N=111	58%	N=277	100%	N=475

Table 79: Question D2

Would you say that in general your health is:	Percent	Number
Excellent	14%	N=66
Very good	36%	N=168
Good	37%	N=176
Fair	10%	N=48
Poor	3%	N=14
Total	100%	N=473

Table 80: Question D3

What impact, if any, do you think the economy will have on your family income in the next 6 months? Do you think the impact will be:	Percent	Number
Very positive	7%	N=33
Somewhat positive	21%	N=98
Neutral	46%	N=219
Somewhat negative	20%	N=96
Very negative	5%	N=26
Total	100%	N=472

The National Citizen Survey™

Table 81: Question D4

What is your employment status?	Percent	Number
Working full time for pay	48%	N=228
Working part time for pay	7%	N=33
Unemployed, looking for paid work	5%	N=22
Unemployed, not looking for paid work	4%	N=18
Fully retired	36%	N=171
Total	100%	N=472

Table 82: Question D5

Do you work inside the boundaries of Cañon City?	Percent	Number
Yes, outside the home	38%	N=172
Yes, from home	5%	N=25
No	57%	N=258
Total	100%	N=455

Table 83: Question D6

How many years have you lived in Cañon City?	Percent	Number
Less than 2 years	15%	N=71
2 to 5 years	14%	N=65
6 to 10 years	14%	N=65
11 to 20 years	22%	N=105
More than 20 years	36%	N=169
Total	100%	N=475

Table 84: Question D7

Which best describes the building you live in?	Percent	Number
One family house detached from any other houses	71%	N=338
Building with two or more homes (duplex, townhome, apartment or condominium)	22%	N=104
Mobile home	5%	N=23
Other	2%	N=9
Total	100%	N=474

Table 85: Question D8

Is this house, apartment or mobile home...	Percent	Number
Rented	33%	N=154
Owned	67%	N=316
Total	100%	N=470

The National Citizen Survey™

Table 86: Question D9

About how much is your monthly housing cost for the place you live (including rent, mortgage payment, property tax, property insurance and homeowners' association (HOA) fees)?	Percent	Number
Less than \$300 per month	10%	N=46
\$300 to \$599 per month	20%	N=90
\$600 to \$999 per month	40%	N=183
\$1,000 to \$1,499 per month	17%	N=76
\$1,500 to \$2,499 per month	11%	N=51
\$2,500 or more per month	2%	N=8
Total	100%	N=454

Table 87: Question D10

Do any children 17 or under live in your household?	Percent	Number
No	72%	N=338
Yes	28%	N=134
Total	100%	N=473

Table 88: Question D11

Are you or any other members of your household aged 65 or older?	Percent	Number
No	62%	N=293
Yes	38%	N=179
Total	100%	N=472

Table 89: Question D12

How much do you anticipate your household's total income before taxes will be for the current year? (Please include in your total income money from all sources for all persons living in your household.)	Percent	Number
Less than \$25,000	22%	N=98
\$25,000 to \$49,999	35%	N=156
\$50,000 to \$99,999	31%	N=139
\$100,000 to \$149,999	8%	N=38
\$150,000 or more	4%	N=19
Total	100%	N=450

Table 90: Question D13

Are you Spanish, Hispanic or Latino?	Percent	Number
No, not Spanish, Hispanic or Latino	95%	N=443
Yes, I consider myself to be Spanish, Hispanic or Latino	5%	N=22
Total	100%	N=465

The National Citizen Survey™

Table 91: Question D14

What is your race? (Mark one or more races to indicate what race(s) you consider yourself to be.)	Percent	Number
American Indian or Alaskan Native	2%	N=9
Asian, Asian Indian or Pacific Islander	1%	N=4
Black or African American	0%	N=0
White	94%	N=436
Other	5%	N=25

Total may exceed 100% as respondents could select more than one option.

Table 92: Question D15

In which category is your age?	Percent	Number
18 to 24 years	1%	N=3
25 to 34 years	22%	N=103
35 to 44 years	13%	N=63
45 to 54 years	18%	N=84
55 to 64 years	13%	N=62
65 to 74 years	17%	N=80
75 years or older	16%	N=77
Total	100%	N=472

Table 93: Question D16

What is your sex?	Percent	Number
Female	54%	N=253
Male	46%	N=214
Total	100%	N=467

Table 94: Question D17

Do you consider a cell phone or landline your primary telephone number?	Percent	Number
Cell	68%	N=319
Land line	20%	N=96
Both	12%	N=56
Total	100%	N=472

Appendix B: Benchmark Comparisons

Comparison Data

NRC's database of comparative resident opinion is comprised of resident perspectives gathered in surveys from over 500 communities whose residents evaluated the same kinds of topics on The National Citizen Survey™. The comparison evaluations are from the most recent survey completed in each community; most communities conduct surveys every year or in alternating years. NRC adds the latest results quickly upon survey completion, keeping the benchmark data fresh and relevant. The communities in the database represent a wide geographic and population range. Cañon City chose to have comparisons made to the entire database.

Interpreting the Results

Ratings are compared when there are at least five communities in which a similar question was asked. Where comparisons are available, four columns are provided in the table. The first column is Cañon City's "percent positive." The percent positive is the combination of the top two most positive response options (i.e., "excellent" and "good," "very safe" and "somewhat safe," etc.), or, in the case of resident behaviors/participation, the percent positive represents the proportion of respondents indicating "yes" or participating in an activity at least once a month. The second column is the rank assigned to Cañon City's rating among communities where a similar question was asked. The third column is the number of communities that asked a similar question. The final column shows the comparison of Cañon City's rating to the benchmark.

In that final column, Cañon City's results are noted as being "higher" than the benchmark, "lower" than the benchmark or "similar" to the benchmark, meaning that the average rating given by Cañon City residents is statistically similar to or different (greater or lesser) than the benchmark. More extreme differences are noted as "much higher" or "much lower."

Benchmark Database Characteristics	
Region	Percent
New England	3%
Middle Atlantic	5%
East North Central	15%
West North Central	13%
South Atlantic	22%
East South Central	3%
West South Central	7%
Mountain	16%
Pacific	16%
Population	Percent
Less than 10,000	10%
10,000 to 24,999	22%
25,000 to 49,999	23%
50,000 to 99,999	22%
100,000 or more	23%

National Benchmark Comparisons

Table 95: Community Characteristics General

	Percent positive	Rank	Number of communities in comparison	Comparison to benchmark
The overall quality of life in Cañon City	60%	427	481	Lower
Overall image or reputation of Cañon City	31%	345	368	Much lower
Cañon City as a place to live	68%	376	413	Lower
Your neighborhood as a place to live	70%	287	329	Similar
Cañon City as a place to raise children	56%	356	402	Lower
Cañon City as a place to retire	69%	169	376	Similar
Overall appearance of Cañon City	47%	342	377	Lower

Table 96: Community Characteristics by Facet

		Percent positive	Rank	Number of communities in comparison	Comparison to benchmark
Safety	Overall feeling of safety in Cañon City	63%	300	352	Lower
	In your neighborhood during the day	87%	291	374	Similar
	In Cañon City's downtown/commercial area during the day	85%	235	328	Similar
Mobility	Overall ease of getting to the places you usually have to visit	62%	222	255	Lower
	Availability of paths and walking trails	71%	111	329	Similar
	Ease of walking in Cañon City	54%	239	317	Similar
	Ease of travel by bicycle in Cañon City	37%	250	319	Lower
	Ease of travel by car in Cañon City	48%	262	318	Similar
	Ease of public parking	36%	176	213	Lower
	Traffic flow on major streets	29%	312	362	Lower
Natural Environment	Quality of overall natural environment in Cañon City	76%	184	290	Similar
	Cleanliness of Cañon City	56%	242	297	Lower
	Air quality	84%	121	256	Similar
Built Environment	Overall "built environment" of Cañon City (including overall design, building and parks)	44%	216	244	Lower
	Overall quality of new development in Cañon City	18%	302	302	Much lower
	Availability of affordable quality housing	15%	283	315	Lower
	Variety of housing options	19%	282	293	Much lower
	Public places where people want to spend time	49%	198	237	Lower
	Overall economic health of Cañon City	20%	243	250	Much lower
	Vibrant downtown/commercial area	22%	209	228	Much lower
Economy	Overall quality of business and service establishments in Cañon City	34%	277	284	Lower
	Cost of living in Cañon City	32%	190	247	Similar
	Shopping opportunities	16%	292	308	Much lower
	Employment opportunities	12%	316	324	Much lower
	Cañon City as a place to visit	64%	124	266	Similar
	Cañon City as a place to work	28%	374	379	Much lower
Recreation and Wellness	Health and wellness opportunities in Cañon City	41%	233	245	Lower
	Availability of affordable quality mental health care	22%	200	216	Lower
	Availability of preventive health services	29%	235	245	Much lower
	Availability of affordable quality health care	28%	262	272	Much lower
	Availability of affordable quality food	45%	236	250	Lower
	Recreational opportunities	59%	206	312	Similar

The National Citizen Survey™

		Percent positive	Rank	Number of communities in comparison	Comparison to benchmark
	Fitness opportunities (including exercise classes and paths or trails, etc.)	63%	158	235	Similar
Education and Enrichment	Overall opportunities for education and enrichment	31%	237	247	Much lower
	Opportunities to participate in religious or spiritual events and activities	68%	179	212	Similar
	Opportunities to attend cultural/arts/music activities	43%	241	310	Similar
	Adult educational opportunities	30%	206	224	Lower
	K-12 education	49%	235	284	Lower
	Availability of affordable quality child care/preschool	22%	252	263	Much lower
	Opportunities to participate in social events and activities	52%	210	273	Similar
Community Engagement	Neighborhoodliness of Cañon City	41%	227	239	Lower
	Openness and acceptance of the community toward people of diverse backgrounds	26%	306	306	Much lower
	Opportunities to participate in community matters	47%	266	285	Lower
	Opportunities to volunteer	63%	220	276	Similar

Table 97: Governance General

	Percent positive	Rank	Number of communities in comparison	Comparison to benchmark
Services provided by the City of Cañon City	43%	444	454	Lower
Overall customer service by Cañon City employees (police, receptionists, planners, etc.)	47%	382	397	Lower
Value of services for the taxes paid to Cañon City	26%	414	423	Lower
Overall direction that Cañon City is taking	24%	334	334	Much lower
Job Cañon City government does at welcoming citizen involvement	22%	332	333	Much lower
Overall confidence in Cañon City government	19%	250	250	Much lower
Generally acting in the best interest of the community	20%	250	250	Much lower
Being honest	19%	242	242	Much lower
Treating all residents fairly	22%	247	247	Much lower
Services provided by the Federal Government	30%	209	259	Similar

Table 98: Governance by Facet

		Percent positive	Rank	Number of communities in comparison	Comparison to benchmark
Safety	Police services	57%	468	492	Lower
	Fire services	87%	255	412	Similar
	Ambulance or emergency medical services	79%	330	372	Similar
	Crime prevention	41%	347	381	Lower
	Fire prevention and education	66%	252	301	Similar
	Animal control	47%	305	362	Similar
	Emergency preparedness (services that prepare the community for natural disasters or other emergency situations)	29%	285	290	Much lower
Mobility	Traffic enforcement	44%	377	394	Lower
	Street repair	11%	410	418	Much lower
	Street cleaning	32%	325	337	Much lower
	Street lighting	39%	322	349	Lower
	Snow removal	39%	293	309	Lower

The National Citizen Survey™

		Percent positive	Rank	Number of communities in comparison	Comparison to benchmark
	Sidewalk maintenance	17%	338	340	Much lower
	Traffic signal timing	17%	275	275	Much lower
Natural Environment	Garbage collection	81%	292	377	Similar
	Recycling	43%	370	379	Much lower
	Yard waste pick-up	39%	284	286	Much lower
	Drinking water	61%	251	337	Similar
	Preservation of natural areas such as open space, farmlands and greenbelts	46%	231	267	Similar
	Cañon City open space	46%	184	225	Similar
Built Environment	Storm drainage	32%	372	375	Much lower
	Sewer services	69%	256	341	Similar
	Power (electric and/or gas) utility	63%	171	184	Lower
	Utility billing	59%	194	219	Similar
	Land use, planning and zoning	16%	316	320	Much lower
	Code enforcement (weeds, abandoned buildings, etc.)	18%	402	409	Much lower
	Cable television	24%	206	210	Lower
Economy	Economic development	14%	297	300	Much lower
Recreation and Wellness	City parks	78%	200	345	Similar
	Recreation programs or classes	54%	276	345	Similar
	Recreation centers or facilities	41%	277	290	Lower
	Health services	35%	219	226	Much lower
	City-sponsored special events	46%	251	270	Lower
Education and Enrichment	Public library services	78%	273	363	Similar
Community Engagement	Public information services	47%	277	299	Lower

Table 99: Participation General

	Percent positive	Rank	Number of communities in comparison	Comparison to benchmark
Sense of community	35%	311	326	Lower
Recommend living in Cañon City to someone who asks	69%	273	298	Lower
Remain in Cañon City for the next five years	83%	178	289	Similar
Contacted Cañon City (in-person, phone, email or web) for help or information	43%	196	336	Similar

Table 100: Participation by Facet

		Percent positive	Rank	Number of communities in comparison	Comparison to benchmark
Safety	Stocked supplies in preparation for an emergency	30%	136	216	Similar
	Did NOT report a crime to the police	69%	211	242	Similar
	Household member was NOT a victim of a crime	82%	248	286	Similar
Mobility	Carpooled with other adults or children instead of driving alone	40%	143	229	Similar
	Walked or biked instead of driving	56%	122	238	Similar
Natural Environment	Made efforts to conserve water	85%	78	224	Similar
	Made efforts to make your home more energy efficient	75%	138	225	Similar
	Recycle at home	67%	249	269	Lower
Built Environment	Did NOT observe a code violation or other hazard in Cañon City	31%	224	231	Much lower
	NOT experiencing housing costs stress	72%	105	266	Similar

The National Citizen Survey™

		Percent positive	Rank	Number of communities in comparison	Comparison to benchmark
Economy	Purchase goods or services from a business located in Cañon City	93%	211	235	Similar
	Economy will have positive impact on income	28%	177	267	Similar
	Work inside boundaries of Cañon City	43%	93	236	Similar
Recreation and Wellness	Used Cañon City recreation centers or their services	63%	65	247	Similar
	Visited a neighborhood park or City park	91%	44	281	Similar
	Eat at least 5 portions of fruits and vegetables a day	74%	217	227	Similar
	Participate in moderate or vigorous physical activity	81%	176	231	Similar
	In very good to excellent health	50%	212	231	Similar
	Used Cañon City public libraries or their services	62%	139	254	Similar
Education and Enrichment	Participated in religious or spiritual activities in Cañon City	44%	111	208	Similar
	Attended City-sponsored event	66%	43	238	Higher
	Used Cañon City public libraries or their services	62%	139	254	Similar
Community Engagement	Campaigned or advocated for an issue, cause or candidate	30%	48	219	Similar
	Contacted Cañon City elected officials (in-person, phone, email or web) to express your opinion	21%	69	234	Similar
	Volunteered your time to some group/activity in Cañon City	50%	62	275	Higher
	Participated in a club	34%	54	250	Similar
	Talked to or visited with your immediate neighbors	93%	75	232	Similar
	Done a favor for a neighbor	84%	74	228	Similar
	Attended a local public meeting	25%	79	275	Similar
	Watched (online or on television) a local public meeting	22%	131	236	Similar
	Read or watch local news (via television, paper, computer, etc.)	76%	220	236	Similar
	Vote in local elections	88%	53	269	Similar
	Used Cañon City public libraries or their services	62%	139	254	Similar
	Participated in religious or spiritual activities in Cañon City	44%	111	208	Similar

Communities included in national comparisons

The communities included in Cañon City's comparisons are listed on the following pages along with their population according to the 2010 Census.

Adams County, CO441,603
 Airway Heights city, WA 6,114
 Albany city, OR 50,158
 Albemarle County, VA..... 98,970
 Albert Lea city, MN..... 18,016
 Alexandria city, VA139,966
 Algonquin village, IL..... 30,046
 Aliso Viejo city, CA 47,823
 Altoona city, IA 14,541
 American Canyon city, CA..... 19,454
 Ames city, IA 58,965
 Andover CDP, MA..... 8,762
 Ankeny city, IA 45,582
 Ann Arbor city, MI.....113,934
 Annapolis city, MD 38,394
 Apache Junction city, AZ..... 35,840
 Arapahoe County, CO572,003
 Arkansas City city, AR..... 366

Arlington city, TX365,438
 Arvada city, CO106,433
 Asheville city, NC 83,393
 Ashland city, OR 20,078
 Ashland town, MA..... 16,593
 Ashland town, VA..... 7,225
 Aspen city, CO 6,658
 Athens-Clarke County, GA115,452
 Auburn city, AL 53,380
 Augusta CCD, GA134,777
 Aurora city, CO325,078
 Austin city, TX790,390
 Avon town, CO 6,447
 Avon town, IN 12,446
 Avondale city, AZ 76,238
 Azusa city, CA..... 46,361
 Bainbridge Island city, WA..... 23,025
 Baltimore city, MD.....620,961

The National Citizen Survey™

Bartonville town, TX	1,469	Chattanooga city, TN.....	167,674
Battle Creek city, MI.....	52,347	Chautauqua town, NY	4,464
Bay City city, MI.....	34,932	Chesterfield County, VA.....	316,236
Bay Village city, OH.....	15,651	Citrus Heights city, CA.....	83,301
Baytown city, TX.....	71,802	Clackamas County, OR	375,992
Bedford city, TX.....	46,979	Clarendon Hills village, IL	8,427
Bedford town, MA	13,320	Clayton city, MO	15,939
Bellevue city, WA.....	122,363	Clearwater city, FL	107,685
Bellingham city, WA	80,885	Cleveland Heights city, OH	46,121
Benbrook city, TX.....	21,234	Clinton city, SC	8,490
Bend city, OR.....	76,639	Clive city, IA	15,447
Bethlehem township, PA.....	23,730	Clovis city, CA.....	95,631
Bettendorf city, IA.....	33,217	College Park city, MD	30,413
Billings city, MT.....	104,170	College Station city, TX	93,857
Blaine city, MN.....	57,186	Colleyville city, TX	22,807
Bloomfield Hills city, MI	3,869	Columbia city, MO.....	108,500
Bloomington city, IN	80,405	Columbia city, SC.....	129,272
Bloomington city, MN	82,893	Columbia Falls city, MT.....	4,688
Blue Springs city, MO	52,575	Commerce City city, CO.....	45,913
Boise City city, ID.....	205,671	Concord city, CA	122,067
Bonner Springs city, KS	7,314	Concord town, MA.....	17,668
Boone County, KY	118,811	Conshohocken borough, PA	7,833
Boulder city, CO.....	97,385	Coolidge city, AZ	11,825
Bowling Green city, KY	58,067	Coon Rapids city, MN	61,476
Bozeman city, MT	37,280	Copperas Cove city, TX.....	32,032
Brentwood city, MO.....	8,055	Coral Springs city, FL.....	121,096
Brentwood city, TN	37,060	Coronado city, CA	18,912
Brighton city, CO.....	33,352	Corvallis city, OR	54,462
Brighton city, MI	7,444	Cottonwood Heights city, UT	33,433
Bristol city, TN	26,702	Creve Coeur city, MO	17,833
Broken Arrow city, OK	98,850	Cross Roads town, TX	1,563
Brookfield city, WI	37,920	Cupertino city, CA	58,302
Brookline CDP, MA	58,732	Dacono city, CO.....	4,152
Brooklyn Center city, MN	30,104	Dade City city, FL.....	6,437
Brooklyn city, OH	11,169	Dakota County, MN.....	398,552
Broomfield city, CO	55,889	Dallas city, OR	14,583
Brownsburg town, IN	21,285	Dallas city, TX.....	1,197,816
Buffalo Grove village, IL	41,496	Danville city, KY.....	16,218
Burien city, WA.....	33,313	Dardenne Prairie city, MO.....	11,494
Burleson city, TX.....	36,690	Darien city, IL.....	22,086
Burlingame city, CA.....	28,806	Davenport city, FL.....	2,888
Cabarrus County, NC.....	178,011	Davenport city, IA.....	99,685
Cambridge city, MA	105,162	Davidson town, NC.....	10,944
Canandaigua city, NY	10,545	Dayton city, OH	141,527
Cannon Beach city, OR.....	1,690	Dayton town, WY	757
Cañon City city, CO	16,400	Dearborn city, MI	98,153
Canton city, SD	3,057	Decatur city, GA.....	19,335
Cape Coral city, FL	154,305	Del Mar city, CA.....	4,161
Cape Girardeau city, MO.....	37,941	DeLand city, FL.....	27,031
Carlisle borough, PA	18,682	Delaware city, OH.....	34,753
Carlsbad city, CA.....	105,328	Delray Beach city, FL.....	60,522
Carroll city, IA.....	10,103	Denison city, TX.....	22,682
Cartersville city, GA.....	19,731	Denton city, TX.....	113,383
Cary town, NC	135,234	Denver city, CO.....	600,158
Castine town, ME	1,366	Derby city, KS.....	22,158
Castle Pines North city, CO	10,360	Des Moines city, IA	203,433
Castle Rock town, CO.....	48,231	Des Peres city, MO.....	8,373
Cedar Hill city, TX	45,028	Destin city, FL.....	12,305
Cedar Rapids city, IA.....	126,326	Dothan city, AL	65,496
Celina city, TX.....	6,028	Douglas County, CO	285,465
Centennial city, CO.....	100,377	Dover city, NH	29,987
Chandler city, AZ	236,123	Dublin city, CA	46,036
Chandler city, TX	2,734	Dublin city, OH	41,751
Chanhassen city, MN.....	22,952	Duluth city, MN.....	86,265
Chapel Hill town, NC	57,233	Durham city, NC	228,330
Chardon city, OH	5,148	Durham County, NC	267,587
Charles County, MD	146,551	Dyer town, IN.....	16,390
Charlotte city, NC	731,424	Eagan city, MN	64,206
Charlotte County, FL	159,978	Eagle Mountain city, UT.....	21,415
Charlottesville city, VA.....	43,475	Eagle town, CO.....	6,508

The National Citizen Survey™

East Grand Forks city, MN	8,601	Hampton city, VA	137,436
East Lansing city, MI	48,579	Hanover County, VA	99,863
Eau Claire city, WI	65,883	Harrisburg city, SD	4,089
Eden Prairie city, MN	60,797	Harrisonburg city, VA	48,914
Eden town, VT	1,323	Harrisonville city, MO	10,019
Edgerton city, KS	1,671	Hastings city, MN	22,172
Edgewater city, CO	5,170	Hayward city, CA	144,186
Edina city, MN	47,941	Henderson city, NV	257,729
Edmond city, OK	81,405	Herndon town, VA	23,292
Edmonds city, WA	39,709	High Point city, NC	104,371
El Cerrito city, CA	23,549	Highland Park city, IL	29,763
El Dorado County, CA	181,058	Highlands Ranch CDP, CO	96,713
El Paso de Robles (Paso Robles) city, CA	29,793	Holland city, MI	33,051
Elk Grove city, CA	153,015	Homer Glen village, IL	24,220
Elko New Market city, MN	4,110	Honolulu County, HI	953,207
Elmhurst city, IL	44,121	Hooksett town, NH	13,451
Encinitas city, CA	59,518	Hopkins city, MN	17,591
Englewood city, CO	30,255	Hopkinton town, MA	14,925
Erie town, CO	18,135	Hoquiam city, WA	8,726
Escambia County, FL	297,619	Horry County, SC	269,291
Estes Park town, CO	5,858	Howard village, WI	17,399
Euclid city, OH	48,920	Hudson city, OH	22,262
Fairview town, TX	7,248	Hudson town, CO	2,356
Farmers Branch city, TX	28,616	Huntley village, IL	24,291
Farmersville city, TX	3,301	Hurst city, TX	37,337
Farmington Hills city, MI	79,740	Hutchinson city, MN	14,178
Farmington town, CT	25,340	Hutto city, TX	14,698
Fayetteville city, NC	200,564	Independence city, MO	116,830
Fernandina Beach city, FL	11,487	Indianola city, IA	14,782
Fishers town, IN	76,794	Indio city, CA	76,036
Flagstaff city, AZ	65,870	Iowa City city, IA	67,862
Flower Mound town, TX	64,669	Irving city, TX	216,290
Forest Grove city, OR	21,083	Issaquah city, WA	30,434
Fort Collins city, CO	143,986	Jackson city, MO	13,758
Fort Lauderdale city, FL	165,521	Jackson County, MI	160,248
Fort Smith city, AR	86,209	James City County, VA	67,009
Franklin city, TN	62,487	Jefferson County, NY	116,229
Fremont city, CA	214,089	Jefferson Parish, LA	432,552
Friendswood city, TX	35,805	Johnson City city, TN	63,152
Fruita city, CO	12,646	Johnston city, IA	17,278
Gahanna city, OH	33,248	Jupiter town, FL	55,156
Gaithersburg city, MD	59,933	Kalamazoo city, MI	74,262
Galveston city, TX	47,743	Kansas City city, KS	145,786
Gardner city, KS	19,123	Kansas City city, MO	459,787
Georgetown city, TX	47,400	Keizer city, OR	36,478
Germantown city, TN	38,844	Kenmore city, WA	20,460
Gilbert town, AZ	208,453	Kennedale city, TX	6,763
Gillette city, WY	29,087	Kennett Square borough, PA	6,072
Glen Ellyn village, IL	27,450	Kent city, WA	92,411
Glendora city, CA	50,073	Kerrville city, TX	22,347
Glenview village, IL	44,692	Kettering city, OH	56,163
Globe city, AZ	7,532	Key West city, FL	24,649
Golden city, CO	18,867	King City city, CA	12,874
Golden Valley city, MN	20,371	King County, WA	1,931,249
Goodyear city, AZ	65,275	Kirkland city, WA	48,787
Grafton village, WI	11,459	Kirkwood city, MO	27,540
Grand Blanc city, MI	8,276	Knoxville city, IA	7,313
Grants Pass city, OR	34,533	La Plata town, MD	8,753
Grass Valley city, CA	12,860	La Porte city, TX	33,800
Greeley city, CO	92,889	La Vista city, NE	15,758
Greenville city, NC	84,554	Lafayette city, CO	24,453
Greenwich town, CT	61,171	Laguna Beach city, CA	22,723
Greenwood Village city, CO	13,925	Laguna Niguel city, CA	62,979
Greer city, SC	25,515	Lake Forest city, IL	19,375
Gunnison County, CO	15,324	Lake in the Hills village, IL	28,965
Hailey city, ID	7,960	Lake Stevens city, WA	28,069
Haines Borough, AK	2,508	Lake Worth city, FL	34,910
Haltom City city, TX	42,409	Lake Zurich village, IL	19,631
Hamilton city, OH	62,477	Lakeville city, MN	55,954
Hamilton town, MA	7,764	Lakewood city, CO	142,980

The National Citizen Survey™

Lakewood city, WA.....	58,163	Missouri City city, TX.....	67,358
Lancaster County, SC.....	76,652	Modesto city, CA.....	201,165
Lane County, OR.....	351,715	Monroe city, MI.....	20,733
Lansing city, MI.....	114,297	Monterey city, CA.....	27,810
Laramie city, WY.....	30,816	Montgomery city, MN.....	2,956
Larimer County, CO.....	299,630	Montgomery County, MD.....	971,777
Las Cruces city, NM.....	97,618	Monticello city, UT.....	1,972
Las Vegas city, NM.....	13,753	Montrose city, CO.....	19,132
Las Vegas city, NV.....	583,756	Monument town, CO.....	5,530
Lawrence city, KS.....	87,643	Mooreville town, NC.....	32,711
Lawrenceville city, GA.....	28,546	Moraga town, CA.....	16,016
Lee's Summit city, MO.....	91,364	Morristown city, TN.....	29,137
Lehi city, UT.....	47,407	Morrisville town, NC.....	18,576
Lenexa city, KS.....	48,190	Morro Bay city, CA.....	10,234
Lewis County, NY.....	27,087	Mountain Village town, CO.....	1,320
Lewiston city, ID.....	31,894	Mountlake Terrace city, WA.....	19,909
Lewisville city, TX.....	95,290	Murphy city, TX.....	17,708
Lewisville town, NC.....	12,639	Naperville city, IL.....	141,853
Libertyville village, IL.....	20,315	Napoleon city, OH.....	8,749
Lincoln city, NE.....	258,379	Nederland city, TX.....	17,547
Lincolnwood village, IL.....	12,590	Needham CDP, MA.....	28,886
Lindsborg city, KS.....	3,458	Nevada City city, CA.....	3,068
Little Chute village, WI.....	10,449	Nevada County, CA.....	98,764
Littleton city, CO.....	41,737	New Braunfels city, TX.....	57,740
Livermore city, CA.....	80,968	New Brighton city, MN.....	21,456
Lombard village, IL.....	43,165	New Hanover County, NC.....	202,667
Lone Tree city, CO.....	10,218	New Hope city, MN.....	20,339
Long Grove village, IL.....	8,043	New Orleans city, LA.....	343,829
Longmont city, CO.....	86,270	New Port Richey city, FL.....	14,911
Longview city, TX.....	80,455	New Smyrna Beach city, FL.....	22,464
Lonsdale city, MN.....	3,674	New Ulm city, MN.....	13,522
Los Alamos County, NM.....	17,950	Newberg city, OR.....	22,068
Los Altos Hills town, CA.....	7,922	Newport city, RI.....	24,672
Louisville city, CO.....	18,376	Newport News city, VA.....	180,719
Lower Merion township, PA.....	57,825	Newton city, IA.....	15,254
Lynchburg city, VA.....	75,568	Noblesville city, IN.....	51,969
Lynnwood city, WA.....	35,836	Nogales city, AZ.....	20,837
Macomb County, MI.....	840,978	Norcross city, GA.....	9,116
Manassas city, VA.....	37,821	Norfolk city, NE.....	24,210
Manhattan Beach city, CA.....	35,135	Norfolk city, VA.....	242,803
Manhattan city, KS.....	52,281	North Mankato city, MN.....	13,394
Mankato city, MN.....	39,309	North Port city, FL.....	57,357
Maple Grove city, MN.....	61,567	North Richland Hills city, TX.....	63,343
Maplewood city, MN.....	38,018	North Yarmouth town, ME.....	3,565
Maricopa County, AZ.....	3,817,117	Novato city, CA.....	51,904
Marion city, IA.....	34,768	Novi city, MI.....	55,224
Mariposa County, CA.....	18,251	O'Fallon city, IL.....	28,281
Marshfield city, WI.....	19,118	O'Fallon city, MO.....	79,329
Martinez city, CA.....	35,824	Oak Park village, IL.....	51,878
Marysville city, WA.....	60,020	Oakland city, CA.....	390,724
Matthews town, NC.....	27,198	Oakley city, CA.....	35,432
McAllen city, TX.....	129,877	Oklahoma City city, OK.....	579,999
McKinney city, TX.....	131,117	Olathe city, KS.....	125,872
McMinnville city, OR.....	32,187	Old Town city, ME.....	7,840
Menlo Park city, CA.....	32,026	Olmsted County, MN.....	144,248
Menomonee Falls village, WI.....	35,626	Olympia city, WA.....	46,478
Mercer Island city, WA.....	22,699	Orange village, OH.....	3,323
Meridian charter township, MI.....	39,688	Orland Park village, IL.....	56,767
Meridian city, ID.....	75,092	Orleans Parish, LA.....	343,829
Merriam city, KS.....	11,003	Oshkosh city, WI.....	66,083
Mesa city, AZ.....	439,041	Oshtemo charter township, MI.....	21,705
Mesa County, CO.....	146,723	Oswego village, IL.....	30,355
Miami Beach city, FL.....	87,779	Otsego County, MI.....	24,164
Miami city, FL.....	399,457	Ottawa County, MI.....	263,801
Middleton city, WI.....	17,442	Overland Park city, KS.....	173,372
Midland city, MI.....	41,863	Paducah city, KY.....	25,024
Milford city, DE.....	9,559	Palm Beach Gardens city, FL.....	48,452
Milton city, GA.....	32,661	Palm Coast city, FL.....	75,180
Minneapolis city, MN.....	382,578	Palo Alto city, CA.....	64,403
Minnetrista city, MN.....	6,384	Palos Verdes Estates city, CA.....	13,438

The National Citizen Survey™

Papillion city, NE	18,894	Sammamish city, WA	45,780
Paradise Valley town, AZ	12,820	San Anselmo town, CA	12,336
Park City city, UT	7,558	San Diego city, CA	1,307,402
Parker town, CO	45,297	San Francisco city, CA	805,235
Parkland city, FL	23,962	San Jose city, CA	945,942
Pasco city, WA	59,781	San Juan County, NM	130,044
Pasco County, FL	464,697	San Marcos city, CA	83,781
Payette city, ID	7,433	San Marcos city, TX	44,894
Pearland city, TX	91,252	San Rafael city, CA	57,713
Peoria city, AZ	154,065	Sanford city, FL	53,570
Peoria city, IL	115,007	Sangamon County, IL	197,465
Pflugerville city, TX	46,936	Santa Clarita city, CA	176,320
Phoenix city, AZ	1,445,632	Santa Fe city, NM	67,947
Pinehurst village, NC	13,124	Santa Fe County, NM	144,170
Piqua city, OH	20,522	Santa Monica city, CA	89,736
Pitkin County, CO	17,148	Sarasota County, FL	379,448
Plano city, TX	259,841	Savage city, MN	26,911
Platte City city, MO	4,691	Schaumburg village, IL	74,227
Pleasant Hill city, IA	8,785	Schertz city, TX	31,465
Pleasanton city, CA	70,285	Scott County, MN	129,928
Plymouth city, MN	70,576	Scottsdale city, AZ	217,385
Polk County, IA	430,640	Seaside city, CA	33,025
Pompano Beach city, FL	99,845	Sedona city, AZ	10,031
Port Orange city, FL	56,048	Sevierville city, TN	14,807
Port St. Lucie city, FL	164,603	Shakopee city, MN	37,076
Portland city, OR	583,776	Sharonville city, OH	13,560
Post Falls city, ID	27,574	Shawnee city, KS	62,209
Powell city, OH	11,500	Shawnee city, OK	29,857
Powhatan County, VA	28,046	Sherborn town, MA	4,119
Prince William County, VA	402,002	Shoreline city, WA	53,007
Prior Lake city, MN	22,796	Shoreview city, MN	25,043
Pueblo city, CO	106,595	Shorewood village, IL	15,615
Purcellville town, VA	7,727	Shorewood village, WI	13,162
Queen Creek town, AZ	26,361	Sierra Vista city, AZ	43,888
Raleigh city, NC	403,892	Silverton city, OR	9,222
Ramsey city, MN	23,668	Sioux Center city, IA	7,048
Raymond town, ME	4,436	Sioux Falls city, SD	153,888
Raymore city, MO	19,206	Skokie village, IL	64,784
Redmond city, OR	26,215	Snellville city, GA	18,242
Redmond city, WA	54,144	Snoqualmie city, WA	10,670
Redwood City city, CA	76,815	Snowmass Village town, CO	2,826
Reno city, NV	225,221	Somerset town, MA	18,165
Reston CDP, VA	58,404	South Jordan city, UT	50,418
Richland city, WA	48,058	South Lake Tahoe city, CA	21,403
Richmond city, CA	103,701	Southlake city, TX	26,575
Richmond Heights city, MO	8,603	Spearfish city, SD	10,494
Rio Rancho city, NM	87,521	Spring Hill city, KS	5,437
River Falls city, WI	15,000	Springboro city, OH	17,409
Riverside city, CA	303,871	Springfield city, MO	159,498
Riverside city, MO	2,937	Springville city, UT	29,466
Roanoke city, VA	97,032	St. Augustine city, FL	12,975
Roanoke County, VA	92,376	St. Charles city, IL	32,974
Rochester Hills city, MI	70,995	St. Cloud city, FL	35,183
Rock Hill city, SC	66,154	St. Cloud city, MN	65,842
Rockville city, MD	61,209	St. Joseph city, MO	76,780
Roeland Park city, KS	6,731	St. Joseph town, WI	3,842
Rogers city, MN	8,597	St. Louis County, MN	200,226
Rohnert Park city, CA	40,971	State College borough, PA	42,034
Rolla city, MO	19,559	Steamboat Springs city, CO	12,088
Roselle village, IL	22,763	Sterling Heights city, MI	129,699
Rosemount city, MN	21,874	Sugar Grove village, IL	8,997
Rosenberg city, TX	30,618	Sugar Land city, TX	78,817
Roseville city, MN	33,660	Suisun City city, CA	28,111
Round Rock city, TX	99,887	Summit city, NJ	21,457
Royal Oak city, MI	57,236	Summit County, UT	36,324
Royal Palm Beach village, FL	34,140	Summit village, IL	11,054
Saco city, ME	18,482	Sunnyvale city, CA	140,081
Sacramento city, CA	466,488	Surprise city, AZ	117,517
Sahuarita town, AZ	25,259	Suwanee city, GA	15,355
Salida city, CO	5,236	Tacoma city, WA	198,397

The National Citizen Survey™

Takoma Park city, MD	16,715	Wauwatosa city, WI	46,396
Tamarac city, FL	60,427	Waverly city, IA	9,874
Temecula city, CA	100,097	Weddington town, NC	9,459
Tempe city, AZ	161,719	Wentzville city, MO.....	29,070
Temple city, TX	66,102	West Carrollton city, OH	13,143
Texarkana city, TX	36,411	West Chester borough, PA.....	18,461
The Woodlands CDP, TX.....	93,847	West Des Moines city, IA.....	56,609
Thousand Oaks city, CA.....	126,683	Western Springs village, IL	12,975
Tigard city, OR.....	48,035	Westerville city, OH.....	36,120
Tracy city, CA	82,922	Westlake town, TX	992
Trinidad CCD, CO.....	12,017	Westminster city, CO.....	106,114
Tualatin city, OR	26,054	Weston town, MA.....	11,261
Tulsa city, OK	391,906	Wheat Ridge city, CO	30,166
Tustin city, CA	75,540	White House city, TN	10,255
Twin Falls city, ID	44,125	Wichita city, KS.....	382,368
Tyler city, TX	96,900	Williamsburg city, VA.....	14,068
Unalaska city, AK	4,376	Willowbrook village, IL	8,540
University Heights city, OH	13,539	Wilmington city, NC.....	106,476
University Park city, TX.....	23,068	Wilsonville city, OR.....	19,509
Upper Arlington city, OH.....	33,771	Windsor town, CO	18,644
Urbandale city, IA	39,463	Windsor town, CT	29,044
Vail town, CO.....	5,305	Winnetka village, IL	12,187
Vancouver city, WA.....	161,791	Winter Garden city, FL.....	34,568
Ventura CCD, CA.....	111,889	Woodbury city, MN.....	61,961
Vernon Hills village, IL.....	25,113	Woodinville city, WA.....	10,938
Vestavia Hills city, AL	34,033	Woodland city, CA.....	55,468
Victoria city, MN.....	7,345	Wrentham town, MA	10,955
Vienna town, VA	15,687	Wyandotte County, KS	157,505
Virginia Beach city, VA.....	437,994	Yakima city, WA.....	91,067
Walnut Creek city, CA.....	64,173	York County, VA.....	65,464
Warrensburg city, MO	18,838	Yorktown town, IN.....	9,405
Washington County, MN.....	238,136	Yorkville city, IL	16,921
Washington town, NH	1,123	Yountville city, CA	2,933
Washoe County, NV	421,407		
Washougal city, WA	14,095		

Appendix C: Detailed Survey Methods

The National Citizen Survey (The NCS™), conducted by National Research Center, Inc., was developed to provide communities an accurate, affordable and easy way to assess and interpret resident opinion about important local topics. Standardization of common questions and survey methods provide the rigor to assure valid results, and each community has enough flexibility to construct a customized version of The NCS.

Results offer insight into residents' perspectives about the community as a whole, including local amenities, services, public trust, resident participation and other aspects of the community in order to support budgeting, land use and strategic planning and communication with residents. Resident demographic characteristics permit comparison to the Census as well as comparison of results for different subgroups of residents. The City of Cañon City funded this research. Please contact Tony O'Rourke, City Manager of Cañon City at thorourke@canoncity.org if you have any questions about the survey.

Survey Validity

The question of survey validity has two parts: 1) how can a community be confident that the results from those who completed the questionnaire are representative of the results that would have been obtained had the survey been administered to the entire population? and 2) how closely do the perspectives recorded on the survey reflect what residents really believe or do?

To answer the first question, the best survey research practices were used for the resources spent to ensure that the results from the survey respondents reflect the opinions of residents in the entire community. These practices include:

- Using a mail-out/mail-back methodology, which typically gets a higher response rate than phone for the same dollars spent. A higher response rate lessens the worry that those who did not respond are different than those who did respond.
- Selecting households at random within the community to receive the survey to ensure that the households selected to receive the survey are representative of the larger community.
- Over-sampling multi-family housing units to improve response from hard-to-reach, lower income or younger apartment dwellers.
- Selecting the respondent within the household using an unbiased sampling procedure; in this case, the "birthday method." The cover letter included an instruction requesting that the respondent in the household be the adult (18 years old or older) who most recently had a birthday, irrespective of year of birth.
- Contacting potential respondents three times to encourage response from people who may have different opinions or habits than those who would respond with only a single prompt.
- Inviting response in a compelling manner (using appropriate letterhead/logos and a signature of a visible leader) to appeal to recipients' sense of civic responsibility.
- Providing a pre-addressed, postage-paid return envelope.
- Offering the survey in Spanish or other language when requested by a given community.
- Weighting the results to reflect the demographics of the population.

The answer to the second question about how closely the perspectives recorded on the survey reflect what residents really believe or do is more complex. Resident responses to surveys are influenced by a variety of factors. For questions about service quality, residents' expectations for service quality play a role as well as the "objective" quality of the service provided, the way the resident perceives the entire community (that is, the context in which the service is provided), the scale on which the resident is asked to record his or her opinion and, of course, the opinion, itself, that a resident holds about the service. Similarly a resident's report of certain behaviors is colored by what he or she believes is the socially desirable response (e.g., reporting tolerant behaviors toward "oppressed groups," likelihood of voting for a tax increase for services to poor people, use of alternative modes of travel to work besides the single occupancy vehicle), his or her memory of the actual behavior (if it is not a question speculating about future actions, like a vote), his or her confidence that he or she can be honest without suffering any negative consequences (thus the need for anonymity) as well as the actual behavior itself.

How closely survey results come to recording the way a person really feels or behaves often is measured by the coincidence of reported behavior with observed current behavior (e.g., driving habits), reported intentions to behave with observed future behavior (e.g., voting choices) or reported opinions about current community quality

with objective characteristics of the community (e.g., feelings of safety correlated with rates of crime). There is a body of scientific literature that has investigated the relationship between reported behaviors and actual behaviors. Well-conducted surveys, by and large, do capture true respondent behaviors or intentions to act with great accuracy. Predictions of voting outcomes tend to be quite accurate using survey research, as do reported behaviors that are not about highly sensitive issues (e.g., family abuse or other illegal or morally sanctioned activities). For self-reports about highly sensitive issues, statistical adjustments can be made to correct for the respondents' tendency to report what they think the "correct" response should be.

Research on the correlation of resident opinion about service quality and "objective" ratings of service quality vary, with some showing stronger relationships than others. NRC's own research has demonstrated that residents who report the lowest ratings of street repair live in communities with objectively worse street conditions than those who report high ratings of street repair (based on road quality, delay in street repair, number of road repair employees). Similarly, the lowest rated fire services appear to be "objectively" worse than the highest rated fire services (expenditures per capita, response time, "professional" status of firefighters, breadth of services and training provided). Resident opinion commonly reflects objective performance data but is an important measure on its own. NRC principals have written, "If you collect trash three times a day but residents think that your trash haul is lousy, you still have a problem."

Selecting Survey Recipients

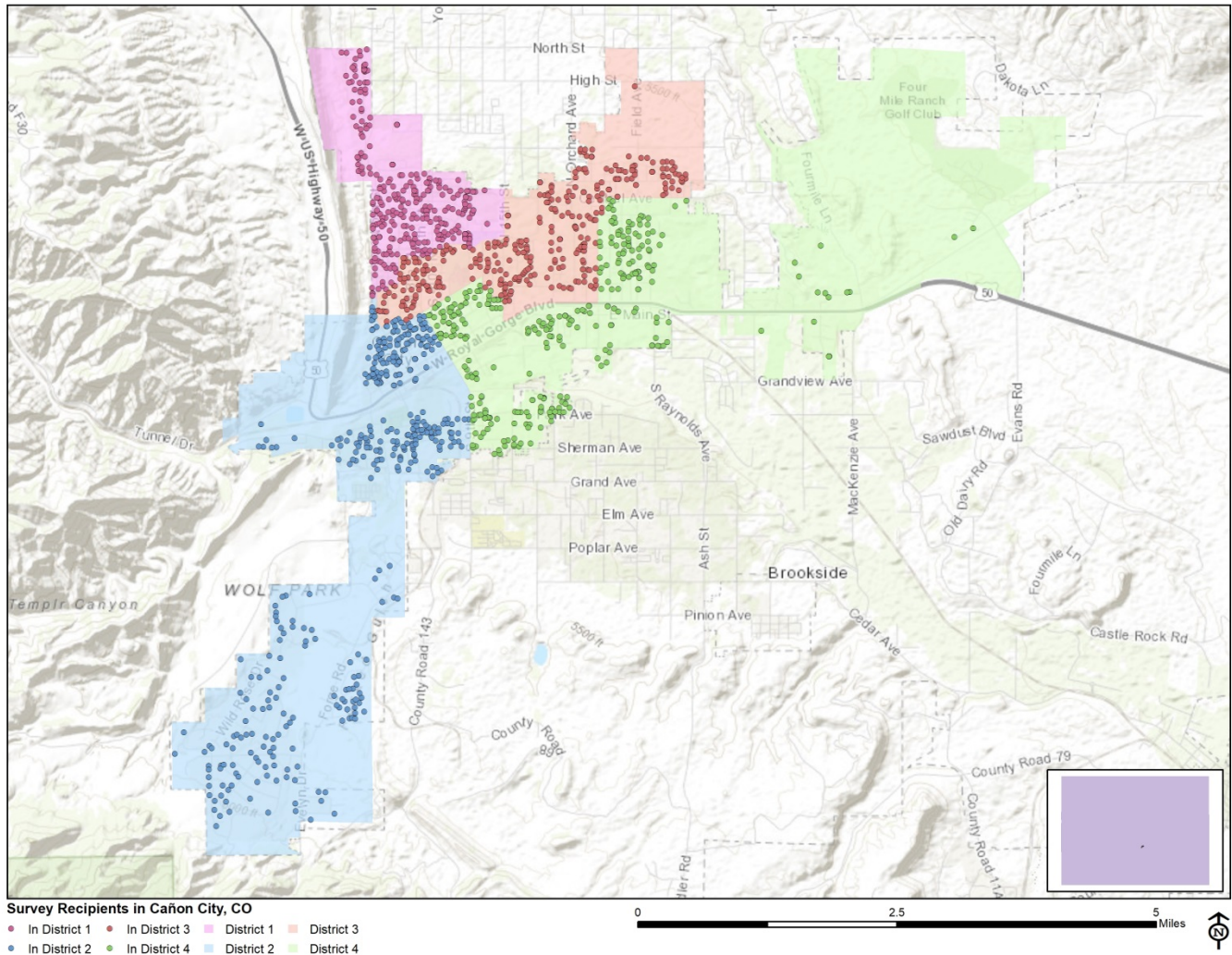
"Sampling" refers to the method by which households were chosen to receive the survey. All households within the City of Cañon City were eligible to participate in the survey. A list of all households within the zip codes serving Cañon City was purchased from Go-Dog Direct based on updated listings from the United States Postal Service. Since some of the zip codes that serve the City of Cañon City households may also serve addresses that lie outside of the community, the exact geographic location of each housing unit was compared to community boundaries using the most current municipal boundary file (updated on a quarterly basis) and addresses located outside of the City of Cañon City boundaries were removed from consideration. Each address identified as being within City boundaries was further identified as being within one of the four Council Districts.

To choose the 1,600 survey recipients, a systematic sampling method was applied to the list of households previously screened for geographic location. Systematic sampling is a procedure whereby a complete list of all possible households is culled, selecting every *Nth* one, giving each eligible household a known probability of selection, until the appropriate number of households is selected. Multi-family housing units were selected at a higher rate as residents of this type of housing typically respond at lower rates to surveys than do those in single-family housing units. Figure 1 displays a map of the households selected to receive the survey. In general, because of the random sampling techniques used, the displayed sampling density will closely mirror the overall housing unit density (which may be different from the population density). While the theory of probability assumes no bias in selection, there may be some minor variations in practice (meaning, an area with only 15% of the housing units might be selected at an actual rate that is slightly above or below that).

An individual within each household was selected using the birthday method. The birthday method selects a person within the household by asking the "person whose birthday has most recently passed" to complete the questionnaire. The underlying assumption in this method is that day of birth has no relationship to the way people respond to surveys. This instruction was contained in the cover letter accompanying the questionnaire.

In addition to the scientific, random selection of households, a link to an online "opt-in" survey was publicized and posted to the City of Cañon City website. This opt-in survey was identical to the scientific survey and open to all City residents. (The data presented in this report exclude the opt-in survey data. These data can be found in the *Supplemental Online Survey Results* provided under separate cover.)

Figure 1: Location of Survey Recipients



Survey Administration and Response

Selected households received three mailings, one week apart, beginning on June 13, 2018. The first mailing was a prenotification postcard announcing the upcoming survey. The next mailing contained a letter from the Mayor inviting the household to participate, a questionnaire and a postage-paid return envelope. The final mailing contained a reminder letter, another survey and a postage-paid return envelope. The second cover letter asked those who had not completed the survey to do so and those who had already done so to refrain from turning in another survey. The survey was available in English. Respondents could also opt to take the survey online if they preferred. Cañon City chose to augment their administration of The NCS with several additional services, including demographic and geographic subgroup comparisons and an additional page of questions. The results of these additional services have been provided under separate cover. Completed surveys were collected over the following seven weeks. The online “opt-in” survey became available to all residents on July 18, 2018 and remained open for three weeks.

About 4% of the 1,600 surveys mailed were returned because the housing unit was vacant or the postal service was unable to deliver the survey as addressed. Of the remaining 1,531 households that received the survey, 484 completed the survey, providing an overall response rate of 32%. Of the 484 completed surveys, 24 were completed online. Additionally, responses were tracked by area; response rates by Council District ranged from 29% to 38%. The response rates were calculated using AAPOR’s response rate #2¹ for mailed surveys of unnamed persons. Additionally, 216 residents completed the online opt-in survey; results of the opt-in survey can be found in the *Supplemental Online Survey Results* report provided under separate cover.

¹ See AAPOR’s Standard Definitions here: [http://www.aapor.org/Standards-Ethics/Standard-Definitions-\(1\).aspx](http://www.aapor.org/Standards-Ethics/Standard-Definitions-(1).aspx) for more information

Table 101: Survey Response Rates by District

	District 1	District 2	District 3	District 4	Overall
Total sample used	370	451	405	374	1,600
I=Complete Interviews	101	160	113	105	480*
P=Partial Interviews	0	1	2	1	4
R=Refusal and break off	0	0	0	0	0
NC=Non Contact	0	0	0	0	0
O=Other	0	0	0	0	0
UH=Unknown household	0	0	0	0	0
UO=Unknown other	253	269	278	248	1,048
Response rate: $(I+P)/(I+P) + (R+NC+O) + (UH+UO)$	29%	37%	29%	30%	32%

*The District of residence for one respondent was unknown.

Confidence Intervals

It is customary to describe the precision of estimates made from surveys by a “level of confidence” and accompanying “confidence interval” (or margin of error). A traditional level of confidence, and the one used here, is 95%. The 95% confidence interval can be any size and quantifies the sampling error or imprecision of the survey results because some residents’ opinions are relied on to estimate all residents’ opinions.²

The margin of error for Cañon City survey is no greater than plus or minus four percentage points around any given percent reported for all respondents (484 completed surveys).

For subgroups of responses, the margin of error increases because the number of respondents for the subgroup is smaller.

Survey Processing (Data Entry)

Upon receipt, completed surveys were assigned a unique identification number. Additionally, each survey was reviewed and “cleaned” as necessary. For example, a question may have asked a respondent to pick two items out of a list of five, but the respondent checked three; in this case, NRC would use protocols to randomly choose two of the three selected items for inclusion in the dataset.

All surveys then were entered twice into an electronic dataset; any discrepancies were resolved in comparison to the original survey form. Range checks as well as other forms of quality control were also performed.

NRC used SurveyGizmo, a web-based survey and analytics platform, to collect the online survey data. Use of an online system means all collected data are entered into the dataset when the respondents submit the surveys. Skip patterns are programmed into system so respondents are automatically “skipped” to the appropriate question based on the individual responses being given. Online programming also allows for more rigid control of the data format, making extensive data cleaning unnecessary.

A series of quality control checks were also performed in order to ensure the integrity of the web data. Steps may include and not be limited to reviewing the data for clusters of repeat IP addresses and time stamps (indicating duplicate responses) and removing empty submissions (questionnaires submitted with no questions answered).

Survey Data Weighting

The demographic characteristics of the survey respondents were compared to those found in the 2010 Census and American Community Survey estimates for adults in the City of Cañon City. The primary objective of weighting survey data is to make the survey respondents reflective of the larger population of the community. The characteristics used for weighting were housing tenure (rent or own), sex, age, and Council District. No

² A 95% confidence interval indicates that for every 100 random samples of this many residents, 95 of the confidence intervals created will include the “true” population response. This theory is applied in practice to mean that the “true” perspective of the target population lies within the confidence interval created for a single survey. For example, if 75% of residents rate a service as “excellent” or “good,” then the 4% margin of error (for the 95% confidence interval) indicates that the range of likely responses for the entire community is between 71% and 79%. This source of uncertainty is called sampling error. In addition to sampling error, other sources of error may affect any survey, including the non-response of residents with opinions different from survey responders. Though standardized on The NCS, on other surveys, differences in question wording, order, translation and data entry, as examples, can lead to somewhat varying results.

adjustments were made for design effects. The results of the weighting scheme are presented in the following table.

Table 102: Cañon City, CO 2018 Weighting Table

Characteristic	2010 Census	Unweighted Data	Weighted Data
Housing			
Rent home	33%	20%	33%
Own home	67%	80%	67%
Detached unit*	78%	84%	76%
Attached unit*	22%	16%	24%
Race and Ethnicity			
White	94%	93%	92%
Not white	6%	7%	8%
Not Hispanic	93%	95%	95%
Hispanic	7%	5%	5%
Sex and Age			
Female	54%	56%	54%
Male	46%	44%	46%
18-34 years of age	24%	6%	22%
35-54 years of age	31%	19%	31%
55+ years of age	45%	74%	46%
Females 18-34	12%	4%	12%
Females 35-54	16%	10%	16%
Females 55+	25%	43%	26%
Males 18-34	12%	2%	11%
Males 35-54	15%	9%	15%
Males 55+	20%	32%	20%
Council District			
District 1	23%	21%	23%
District 2	26%	33%	26%
District 3	27%	24%	27%
District 4	24%	22%	24%

* U.S. Census Bureau, 2011-2015 American Community Survey 5-Year Estimates

Survey Data Analysis and Reporting

The survey dataset was analyzed using the Statistical Package for the Social Sciences (SPSS). For the most part, the percentages presented in the reports represent the “percent positive.” The percent positive is the combination of the top two most positive response options (i.e., “excellent” and “good,” “very safe” and “somewhat safe,” “essential” and “very important,” etc.), or, in the case of resident behaviors/participation, the percent positive represents the proportion of respondents indicating “yes” or participating in an activity at least once a month.

On many of the questions in the survey respondents may answer “don’t know.” The proportion of respondents giving this reply is shown in the full set of responses included in Appendix A. However, these responses have been removed from the analyses presented in the reports. In other words, the tables and graphs display the responses from respondents who had an opinion about a specific item. When a table for a question that only permitted a single response does not total to exactly 100%, it is due to the common practice of percentages being rounded to the nearest whole number.

The data for the opt-in survey are presented separately in the report titled *Supplemental Online Survey Results*.

Appendix D: Survey Materials

Dear Cañon City Resident,

It won't take much of your time to make a big difference!

Your household has been randomly selected to participate in a survey about your community. Your survey will arrive in a few days.

Thank you for helping create a better City!

Sincerely,



Preston R. Troutman
Mayor

Dear Cañon City Resident,

It won't take much of your time to make a big difference!

Your household has been randomly selected to participate in a survey about your community. Your survey will arrive in a few days.

Thank you for helping create a better City!

Sincerely,



Preston R. Troutman
Mayor

Dear Cañon City Resident,

It won't take much of your time to make a big difference!

Your household has been randomly selected to participate in a survey about your community. Your survey will arrive in a few days.

Thank you for helping create a better City!

Sincerely,



Preston R. Troutman
Mayor

Dear Cañon City Resident,

It won't take much of your time to make a big difference!

Your household has been randomly selected to participate in a survey about your community. Your survey will arrive in a few days.

Thank you for helping create a better City!

Sincerely,



Preston R. Troutman
Mayor



City of Cañon City
P.O. Box 1460
Cañon City, CO 81215

Presorted
First Class Mail
US Postage
PAID
Boulder, CO
Permit NO. 94



City of Cañon City
P.O. Box 1460
Cañon City, CO 81215

Presorted
First Class Mail
US Postage
PAID
Boulder, CO
Permit NO. 94



City of Cañon City
P.O. Box 1460
Cañon City, CO 81215

Presorted
First Class Mail
US Postage
PAID
Boulder, CO
Permit NO. 94



City of Cañon City
P.O. Box 1460
Cañon City, CO 81215

Presorted
First Class Mail
US Postage
PAID
Boulder, CO
Permit NO. 94



City of Cañon City
P.O. Box 1460
Cañon City, CO 81215

Presorted
First Class Mail
US Postage
PAID
Boulder, CO
Permit NO.94



*Office of the
City Administrator*

City of Cañon City

*P.O. Box 1460 – 128 Main Street – Cañon City, CO 81215-1460
(719) 269-9011 – Fax: (719) 269-9017*

June 2018

Dear Cañon City Resident:

Please help us shape the future of Cañon City! You have been selected at random to participate in the 2018 Cañon City Citizen Survey.

Please take a few minutes to fill out the enclosed survey. Your participation in this survey is very important – especially since your household is one of only a small number of households being surveyed. Your feedback will help Cañon City make decisions that affect our City.

A few things to remember:

- **Your responses are completely anonymous.**
- In order to hear from a diverse group of residents, the adult 18 years or older in your household who most recently had a birthday should complete this survey.
- **You may return the survey by mail in the enclosed postage-paid envelope, or you can complete the survey online at:**

<http://bit.ly/xxplaceholder>

If you have any questions about the survey please call 719-276-5248.

Thank you for your time and participation!

Sincerely,

Preston R. Troutman
Mayor



*Office of the
City Administrator*

City of Cañon City

*P.O. Box 1460 – 128 Main Street – Cañon City, CO 81215-1460
(719) 269-9011 – Fax: (719) 269-9017*

June 2018

Dear Cañon City Resident:

Here's a second chance if you haven't already responded to the 2018 Cañon City Citizen Survey! **(If you completed it and sent it back, we thank you for your time and ask you to recycle this survey. Please do not respond twice.)**

Please help us shape the future of Cañon City! You have been selected at random to participate in the 2018 Cañon City Citizen Survey.

Please take a few minutes to fill out the enclosed survey. Your participation in this survey is very important – especially since your household is one of only a small number of households being surveyed. Your feedback will help Cañon City make decisions that affect our City.

A few things to remember:

- **Your responses are completely anonymous.**
- In order to hear from a diverse group of residents, the adult 18 years or older in your household who most recently had a birthday should complete this survey.
- **You may return the survey by mail in the enclosed postage-paid envelope, or you can complete the survey online at:**

<http://bit.ly/xxplaceholder>

If you have any questions about the survey please call 719-276-5248.

Thank you for your time and participation!

Sincerely,

Preston R. Troutman
Mayor

Cañon City 2018 Citizen Survey

Please complete this questionnaire if you are the adult (age 18 or older) in the household who most recently had a birthday. The adult's year of birth does not matter. Please select the response (by circling the number or checking the box) that most closely represents your opinion for each question. Your responses are anonymous and will be reported in group form only.

1. Please rate each of the following aspects of quality of life in Cañon City:

	<i>Excellent</i>	<i>Good</i>	<i>Fair</i>	<i>Poor</i>	<i>Don't know</i>
Cañon City as a place to live	1	2	3	4	5
Your neighborhood as a place to live.....	1	2	3	4	5
Cañon City as a place to raise children	1	2	3	4	5
Cañon City as a place to work	1	2	3	4	5
Cañon City as a place to visit.....	1	2	3	4	5
Cañon City as a place to retire	1	2	3	4	5
The overall quality of life in Cañon City	1	2	3	4	5

2. Please rate each of the following characteristics as they relate to Cañon City as a whole:

	<i>Excellent</i>	<i>Good</i>	<i>Fair</i>	<i>Poor</i>	<i>Don't know</i>
Overall feeling of safety in Cañon City	1	2	3	4	5
Overall ease of getting to the places you usually have to visit.....	1	2	3	4	5
Quality of overall natural environment in Cañon City.....	1	2	3	4	5
Overall "built environment" of Cañon City (including overall design, buildings and parks).....	1	2	3	4	5
Health and wellness opportunities in Cañon City	1	2	3	4	5
Overall opportunities for education and enrichment.....	1	2	3	4	5
Overall economic health of Cañon City	1	2	3	4	5
Sense of community.....	1	2	3	4	5
Overall image or reputation of Cañon City.....	1	2	3	4	5

3. Please indicate how likely or unlikely you are to do each of the following:

	<i>Very likely</i>	<i>Somewhat likely</i>	<i>Somewhat unlikely</i>	<i>Very unlikely</i>	<i>Don't know</i>
Recommend living in Cañon City to someone who asks.....	1	2	3	4	5
Remain in Cañon City for the next five years	1	2	3	4	5

4. Please rate how safe or unsafe you feel:

	<i>Very safe</i>	<i>Somewhat safe</i>	<i>Neither safe nor unsafe</i>	<i>Somewhat unsafe</i>	<i>Very unsafe</i>	<i>Don't know</i>
In your neighborhood during the day.....	1	2	3	4	5	6
In Cañon City's downtown/commercial area during the day	1	2	3	4	5	6

5. Please rate each of the following characteristics as they relate to Cañon City as a whole:

	<i>Excellent</i>	<i>Good</i>	<i>Fair</i>	<i>Poor</i>	<i>Don't know</i>
Traffic flow on major streets	1	2	3	4	5
Ease of public parking.....	1	2	3	4	5
Ease of travel by car in Cañon City.....	1	2	3	4	5
Ease of travel by bicycle in Cañon City	1	2	3	4	5
Ease of walking in Cañon City.....	1	2	3	4	5
Availability of paths and walking trails	1	2	3	4	5
Air quality	1	2	3	4	5
Cleanliness of Cañon City	1	2	3	4	5
Overall appearance of Cañon City	1	2	3	4	5
Public places where people want to spend time	1	2	3	4	5
Variety of housing options	1	2	3	4	5
Availability of affordable quality housing	1	2	3	4	5
Fitness opportunities (including exercise classes and paths or trails, etc.)	1	2	3	4	5
Recreational opportunities.....	1	2	3	4	5
Availability of affordable quality food.....	1	2	3	4	5
Availability of affordable quality health care	1	2	3	4	5
Availability of preventive health services	1	2	3	4	5
Availability of affordable quality mental health care	1	2	3	4	5
Overall condition of City streets	1	2	3	4	5

6. Please rate each of the following characteristics as they relate to Cañon City as a whole:

	<i>Excellent</i>	<i>Good</i>	<i>Fair</i>	<i>Poor</i>	<i>Don't know</i>
Availability of affordable quality child care/preschool	1	2	3	4	5
K-12 education	1	2	3	4	5
Adult educational opportunities.....	1	2	3	4	5
Opportunities to attend cultural/arts/music activities	1	2	3	4	5
Opportunities to participate in religious or spiritual events and activities	1	2	3	4	5
Employment opportunities	1	2	3	4	5
Shopping opportunities.....	1	2	3	4	5
Cost of living in Cañon City	1	2	3	4	5
Overall quality of business and service establishments in Cañon City.....	1	2	3	4	5
Vibrant downtown/commercial area	1	2	3	4	5
Overall quality of new development in Cañon City	1	2	3	4	5
Opportunities to participate in social events and activities	1	2	3	4	5
Opportunities to volunteer.....	1	2	3	4	5
Opportunities to participate in community matters	1	2	3	4	5
Openness and acceptance of the community toward people of diverse backgrounds	1	2	3	4	5
Neighborliness of residents in Cañon City.....	1	2	3	4	5

7. Please indicate whether or not you have done each of the following in the last 12 months.

	<i>No</i>	<i>Yes</i>
Made efforts to conserve water	1	2
Made efforts to make your home more energy efficient	1	2
Observed a code violation or other hazard in Cañon City (weeds, abandoned buildings, etc.)	1	2
Household member was a victim of a crime in Cañon City	1	2
Reported a crime to the police in Cañon City.....	1	2
Stocked supplies in preparation for an emergency	1	2
Campaigned or advocated for an issue, cause or candidate	1	2
Contacted the City of Cañon City (in-person, phone, email or web) for help or information.....	1	2
Contacted Cañon City elected officials (in-person, phone, email or web) to express your opinion	1	2

8. In the last 12 months, about how many times, if at all, have you or other household members done each of the following in Cañon City?

	<i>2 times a week or more</i>	<i>2-4 times a month</i>	<i>Once a month or less</i>	<i>Not at all</i>
Used Cañon City recreation centers or their services.....	1	2	3	4
Visited a neighborhood park or City park	1	2	3	4
Used Cañon City public libraries or their services.....	1	2	3	4
Participated in religious or spiritual activities in Cañon City.....	1	2	3	4
Attended a City-sponsored event.....	1	2	3	4
Carpooled with other adults or children instead of driving alone.....	1	2	3	4
Walked or biked instead of driving	1	2	3	4
Volunteered your time to some group/activity in Cañon City.....	1	2	3	4
Participated in a club	1	2	3	4
Talked to or visited with your immediate neighbors	1	2	3	4
Done a favor for a neighbor.....	1	2	3	4

9. Thinking about local public meetings (of local elected officials like City Council or County Commissioners, advisory boards, town halls, HOA, neighborhood watch, etc.), in the last 12 months, about how many times, if at all, have you or other household members attended or watched a local public meeting?

	<i>2 times a week or more</i>	<i>2-4 times a month</i>	<i>Once a month or less</i>	<i>Not at all</i>
Attended a local public meeting	1	2	3	4
Watched (online or on television) a local public meeting.....	1	2	3	4

Cañon City 2018 Citizen Survey

10. Please rate the quality of each of the following services in Cañon City:

	<i>Excellent</i>	<i>Good</i>	<i>Fair</i>	<i>Poor</i>	<i>Don't know</i>
Police services	1	2	3	4	5
Fire services.....	1	2	3	4	5
Ambulance or emergency medical services	1	2	3	4	5
Crime prevention.....	1	2	3	4	5
Fire prevention and education.....	1	2	3	4	5
Traffic enforcement	1	2	3	4	5
Street repair	1	2	3	4	5
Street cleaning	1	2	3	4	5
Street lighting.....	1	2	3	4	5
Snow removal	1	2	3	4	5
Sidewalk maintenance	1	2	3	4	5
Traffic signal timing.....	1	2	3	4	5
Garbage collection	1	2	3	4	5
Recycling	1	2	3	4	5
Yard waste pick-up	1	2	3	4	5
Storm drainage	1	2	3	4	5
Drinking water.....	1	2	3	4	5
Sewer services	1	2	3	4	5
Power (electric and/or gas) utility.....	1	2	3	4	5
Utility billing.....	1	2	3	4	5
City parks.....	1	2	3	4	5
Recreation programs or classes.....	1	2	3	4	5
Recreation centers or facilities	1	2	3	4	5
Land use, planning and zoning.....	1	2	3	4	5
Code enforcement (weeds, abandoned buildings, etc.)	1	2	3	4	5
Animal control	1	2	3	4	5
Economic development	1	2	3	4	5
Health services	1	2	3	4	5
Public library services	1	2	3	4	5
Public information services	1	2	3	4	5
Cable television.....	1	2	3	4	5
Emergency preparedness (services that prepare the community for natural disasters or other emergency situations).....	1	2	3	4	5
Preservation of natural areas such as open space, farmlands and greenbelts.....	1	2	3	4	5
Cañon City open space.....	1	2	3	4	5
City-sponsored special events	1	2	3	4	5
Overall customer service by Cañon City employees (police, receptionists, planners, etc.)	1	2	3	4	5
Building services (building permits, inspections, plan review, etc.)	1	2	3	4	5

11. Overall, how would you rate the quality of the services provided by each of the following?

	<i>Excellent</i>	<i>Good</i>	<i>Fair</i>	<i>Poor</i>	<i>Don't know</i>
The City of Cañon City.....	1	2	3	4	5
The Federal Government	1	2	3	4	5
Fremont County	1	2	3	4	5

12. Please rate the following categories of Cañon City government performance:

	<i>Excellent</i>	<i>Good</i>	<i>Fair</i>	<i>Poor</i>	<i>Don't know</i>
The value of services for the taxes paid to Cañon City.....	1	2	3	4	5
The overall direction that Cañon City is taking	1	2	3	4	5
The job Cañon City government does at welcoming citizen involvement	1	2	3	4	5
Overall confidence in Cañon City government.....	1	2	3	4	5
Generally acting in the best interest of the community	1	2	3	4	5
Being honest.....	1	2	3	4	5
Treating all residents fairly	1	2	3	4	5

13. Please rate how important, if at all, you think it is for the Cañon City community to focus on each of the following in the coming two years:

	<i>Essential</i>	<i>Very important</i>	<i>Somewhat important</i>	<i>Not at all important</i>
Overall feeling of safety in Cañon City.....	1	2	3	4
Overall ease of getting to the places you usually have to visit.....	1	2	3	4
Quality of overall natural environment in Cañon City.....	1	2	3	4
Overall “built environment” of Cañon City (including overall design, buildings and parks)	1	2	3	4
Health and wellness opportunities in Cañon City	1	2	3	4
Overall opportunities for education and enrichment.....	1	2	3	4
Overall economic health of Cañon City	1	2	3	4
Sense of community.....	1	2	3	4

14. Deer hunting by archery is currently legal in Cañon City. To what extent would you support or oppose the Division of Wildlife designating Cañon City and adjacent areas for additional deer hunting archery licenses only by hunters that will meet Division of Wildlife hunter competency and safety guidelines, starting in 2019?

- ☐ Strongly support
- ☐ Somewhat support
- ☐ Somewhat oppose
- ☐ Strongly oppose
- ☐ Don’t know

15. To what extent would you support or oppose using a half-cent sales tax increase to help finance the construction of a new recreation/aquatic community center, with additional funding coming from public and private partners?

- ☐ Strongly support
- ☐ Somewhat support
- ☐ Somewhat oppose
- ☐ Strongly oppose
- ☐ Don’t know

16. To what extent you would support or oppose creating a stormwater organization to fund and operate stormwater flooding prevention and control:

	<i>Strongly support</i>	<i>Somewhat support</i>	<i>Somewhat oppose</i>	<i>Somewhat oppose</i>	<i>Don’t know</i>
Only within Cañon City	1	2	3	4	5
Within Cañon City and adjacent areas of Fremont County.....	1	2	3	4	5

17. If a stormwater organization were to be created, what would be your MOST preferred method of funding the entity? (Please select only one response.)

- ☐ Monthly impervious surface fee for property owners
- ☐ Property tax increase
- ☐ Sales tax increase

18. To what extent you would support or oppose a City lodging tax increase from 2% to 5% for visitors and guests staying at city hotel, motel and lodging accommodations, to be used exclusively for promoting and marketing tourism and special events in the Cañon City and Royal Gorge Region? This 5% tax in the city would replace the existing 2% lodging tax.

- ☐ Strongly support
- ☐ Somewhat support
- ☐ Somewhat oppose
- ☐ Strongly oppose
- ☐ Don’t know

19. To what extent you would support or oppose the adoption of zoning and special review conditions to permit each of the following in the City, but not in the downtown:

	<i>Strongly support</i>	<i>Somewhat support</i>	<i>Somewhat oppose</i>	<i>Somewhat oppose</i>	<i>Don’t know</i>
The <u>sale</u> of recreational marijuana in commercial zones.....	1	2	3	4	5
The <u>cultivation</u> of recreational marijuana in commercial zones.....	1	2	3	4	5

Cañon City 2018 Citizen Survey

20. If the City were to permit the cultivation and sale of recreational marijuana in the City, what would be your MOST preferred use of marijuana sales tax revenue? (Please select only one response.)

- ☐ New recreation and aquatic center
- ☐ Parks improvements
- ☐ Stormwater capital improvements
- ☐ Special events/festivals
- ☐ Law enforcement/substance abuse treatment/homelessness
- ☐ Some other use/none of these
- ☐ Don't know

21. To what extent would you support or oppose the City acquiring available for sale property adjacent to the Arkansas River to enhance river access, parking, recreation, retail, restaurants and residences?

- ☐ Strongly support
- ☐ Somewhat support
- ☐ Somewhat oppose
- ☐ Strongly oppose
- ☐ Don't know

22. Should the City seek public or private partners to renovate the downtown St. Cloud Hotel, or repurpose the hotel as a mixed-use restaurant, residential and commercial building?

- ☐ Refurbish the hotel
- ☐ Repurpose the hotel
- ☐ Neither of these/do something else
- ☐ Do nothing
- ☐ Don't know

23. To what extent would you support or oppose the City exploring development of additional playgrounds and lighted multi-sport fields in the City?

- ☐ Strongly support
- ☐ Somewhat support
- ☐ Somewhat oppose
- ☐ Strongly oppose
- ☐ Don't know

24. Currently, the Mayor is only permitted to vote in the case of a tie. Should the City Charter be amended to permit the Mayor the right to vote on all City Council matters?

- ☐ Yes
- ☐ No
- ☐ Don't know

25. To what extent do you agree or disagree that City Hall is a place where you can have your questions answered?

- ☐ Strongly agree
- ☐ Somewhat agree
- ☐ Somewhat disagree
- ☐ Strongly disagree
- ☐ Don't know

26. Have you had any in-person, phone or email contact with an employee of Cañon City within the last 12 months (including police, receptionists, planners or any others)?

- ☐ No → Go to Question 28
- ☐ Yes → Go to Question 27

27. What was your impression of the employee(s) of Cañon City in your most recent contact? (Rate each characteristic below.)

	<i>Excellent</i>	<i>Good</i>	<i>Fair</i>	<i>Poor</i>	<i>Don't know</i>
Knowledge.....	1	2	3	4	5
Responsiveness	1	2	3	4	5
Courtesy.....	1	2	3	4	5
Customer service impression	1	2	3	4	5

28. Work was recently completed on the 2017 2A street improvement project, which included improvements to 1st Street/Mariposa Road, 10th Street, 16th Street, Greenwood Avenue, South Street, Yale Place (North/South), Fairview Avenue and Whipple Avenue. Now that the first year's work is complete, how would you rate the overall quality of the 2017 2A street improvement project?

- ☐ Excellent
- ☐ Good
- ☐ Fair
- ☐ Poor
- ☐ Don't know

29. To what extent would you support or oppose eliminating the frontage roads along US Highway 50 between 15th St. and Reynolds Avenue to improve access to local businesses, aesthetics, and traffic signal operations?

- ☐ Strongly support
- ☐ Somewhat support
- ☐ Somewhat oppose
- ☐ Strongly oppose
- ☐ Don't know

30. To what extent would you support or oppose reducing the downtown speed limit (on Main St. between 1st St. and 9th St.) from 25 miles per hour to 15 miles per hour?

- ☐ Strongly support
- ☐ Somewhat support
- ☐ Somewhat oppose
- ☐ Strongly oppose
- ☐ Don't know

Our last questions are about you and your household. Again, all of your responses to this survey are completely anonymous and will be reported in group form only.

D1. How often, if at all, do you do each of the following, considering all of the times you could?

	<i>Never</i>	<i>Rarely</i>	<i>Sometimes</i>	<i>Usually</i>	<i>Always</i>
Recycle at home	1	2	3	4	5
Purchase goods or services from a business located in Cañon City.....	1	2	3	4	5
Eat at least 5 portions of fruits and vegetables a day	1	2	3	4	5
Participate in moderate or vigorous physical activity	1	2	3	4	5
Read or watch local news (via television, paper, computer, etc.)	1	2	3	4	5
Vote in local elections.....	1	2	3	4	5

D2. Would you say that in general your health is:

- ☐ Excellent ☐ Very good ☐ Good ☐ Fair ☐ Poor

D3. What impact, if any, do you think the economy will have on your family income in the next 6 months? Do you think the impact will be:

- ☐ Very positive ☐ Somewhat positive ☐ Neutral ☐ Somewhat negative ☐ Very negative

D4. What is your employment status?

- ☐ Working full time for pay
☐ Working part time for pay
☐ Unemployed, looking for paid work
☐ Unemployed, not looking for paid work
☐ Fully retired

D5. Do you work inside the boundaries of Cañon City?

- ☐ Yes, outside the home
☐ Yes, from home
☐ No

D6. How many years have you lived in Cañon City?

- ☐ Less than 2 years ☐ 11-20 years
☐ 2-5 years ☐ More than 20 years
☐ 6-10 years

D7. Which best describes the building you live in?

- ☐ One family house detached from any other houses
☐ Building with two or more homes (duplex, townhome, apartment or condominium)
☐ Mobile home
☐ Other

D8. Is this house, apartment or mobile home...

- ☐ Rented
☐ Owned

D9. About how much is your monthly housing cost for the place you live (including rent, mortgage payment, property tax, property insurance and homeowners' association (HOA) fees)?

- ☐ Less than \$300 per month
☐ \$300 to \$599 per month
☐ \$600 to \$999 per month
☐ \$1,000 to \$1,499 per month
☐ \$1,500 to \$2,499 per month
☐ \$2,500 or more per month

D10. Do any children 17 or under live in your household?

- ☐ No ☐ Yes

D11. Are you or any other members of your household aged 65 or older?

- ☐ No ☐ Yes

D12. How much do you anticipate your household's total income before taxes will be for the current year? (Please include in your total income money from all sources for all persons living in your household.)

- ☐ Less than \$25,000
☐ \$25,000 to \$49,999
☐ \$50,000 to \$99,999
☐ \$100,000 to \$149,999
☐ \$150,000 or more

Please respond to both questions D13 and D14:

D13. Are you Spanish, Hispanic or Latino?

- ☐ No, not Spanish, Hispanic or Latino
☐ Yes, I consider myself to be Spanish, Hispanic or Latino

D14. What is your race? (Mark one or more races to indicate what race you consider yourself to be.)

- ☐ American Indian or Alaskan Native
☐ Asian, Asian Indian or Pacific Islander
☐ Black or African American
☐ White
☐ Other

D15. In which category is your age?

- ☐ 18-24 years ☐ 55-64 years
☐ 25-34 years ☐ 65-74 years
☐ 35-44 years ☐ 75 years or older
☐ 45-54 years

D16. What is your sex?

- ☐ Female ☐ Male

D17. Do you consider a cell phone or land line your primary telephone number?

- ☐ Cell ☐ Land line ☐ Both

Thank you for completing this survey. Please return the completed survey in the postage-paid envelope to: National Research Center, Inc., PO Box 549, Belle Mead, NJ 08502