

THE NCSTM

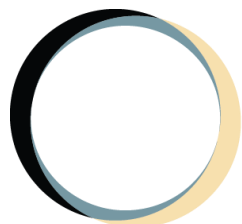
The National Citizen SurveyTM

Cañon City, CO

Technical Appendices

DRAFT

2016



NRC

National Research Center Inc

2955 Valmont Road Suite 300
Boulder, Colorado 80301
n-r-c.com • 303-444-7863

ICMA

Leaders at the Core of Better Communities

777 North Capitol Street NE Suite 500
Washington, DC 20002
icma.org • 800-745-8780

Contents

Appendix A: Complete Survey Responses	1
Appendix B: Benchmark Comparisons	21
Appendix C: Detailed Survey Methods	30
Appendix D: Survey Materials	35



The National Citizen Survey™
© 2001-2016 National Research Center, Inc.

The NCS™ is presented by NRC in collaboration with ICMA.

NRC is a charter member of the AAPOR Transparency Initiative, providing clear disclosure of our sound and ethical survey research practices.

Appendix A: Complete Survey Responses

Responses excluding “don’t know”

The following pages contain a complete set of responses to each question on the survey, excluding the “don’t know” responses. The percent of respondents giving a particular response is shown followed by the number of respondents (denoted with “N=”).

Table 1: Question 1

Please rate each of the following aspects of quality of life in Cañon City:	Excellent		Good		Fair		Poor		Total	
Cañon City as a place to live	18%	N=98	53%	N=296	24%	N=131	5%	N=29	100%	N=555
Your neighborhood as a place to live	26%	N=147	48%	N=267	19%	N=108	6%	N=35	100%	N=556
Cañon City as a place to raise children	18%	N=90	47%	N=232	22%	N=106	13%	N=62	100%	N=490
Cañon City as a place to work	7%	N=32	29%	N=141	35%	N=171	30%	N=148	100%	N=492
Cañon City as a place to visit	27%	N=148	42%	N=226	24%	N=130	7%	N=40	100%	N=544
Cañon City as a place to retire	27%	N=141	49%	N=250	17%	N=90	7%	N=34	100%	N=515
The overall quality of life in Cañon City	14%	N=78	51%	N=283	27%	N=149	7%	N=39	100%	N=549

Table 2: Question 2

Please rate each of the following characteristics as they relate to Cañon City as a whole:	Excellent		Good		Fair		Poor		Total	
Overall feeling of safety in Cañon City	20%	N=111	56%	N=314	19%	N=103	5%	N=27	100%	N=555
Overall ease of getting to the places you usually have to visit	21%	N=114	48%	N=267	24%	N=132	7%	N=41	100%	N=553
Quality of overall natural environment in Cañon City	25%	N=136	51%	N=281	20%	N=108	4%	N=23	100%	N=548
Overall "built environment" of Cañon City (including overall design, buildings and parks)	8%	N=44	38%	N=212	41%	N=228	12%	N=68	100%	N=551
Health and wellness opportunities in Cañon City	9%	N=52	37%	N=203	40%	N=219	13%	N=71	100%	N=544
Overall opportunities for education and enrichment	7%	N=38	31%	N=164	42%	N=217	20%	N=102	100%	N=521
Overall economic health of Cañon City	4%	N=21	20%	N=106	40%	N=210	35%	N=184	100%	N=521
Sense of community	8%	N=43	33%	N=178	41%	N=219	18%	N=99	100%	N=540
Overall image or reputation of Cañon City	6%	N=35	33%	N=180	40%	N=217	21%	N=112	100%	N=543

Table 3: Question 3

Please indicate how likely or unlikely you are to do each of the following:	Very likely		Somewhat likely		Somewhat unlikely		Very unlikely		Total	
Recommend living in Cañon City to someone who asks	30%	N=164	47%	N=261	11%	N=62	11%	N=63	100%	N=549
Remain in Cañon City for the next five years	56%	N=304	26%	N=141	7%	N=40	11%	N=58	100%	N=543

Table 4: Question 4

Please rate how safe or unsafe you feel:	Very safe		Somewhat safe		Neither safe nor unsafe		Somewhat unsafe		Very unsafe		Total	
In your neighborhood during the day	61%	N=338	31%	N=173	5%	N=26	2%	N=12	1%	N=8	100%	N=557
In Cañon City's downtown/commercial area during the day	49%	N=269	36%	N=196	8%	N=45	7%	N=36	0%	N=2	100%	N=548

Table 5: Question 5

Please rate each of the following characteristics as they relate to Cañon City as a whole:	Excellent		Good		Fair		Poor		Total	
Traffic flow on major streets	5%	N=28	29%	N=160	41%	N=226	26%	N=142	100%	N=556
Ease of public parking	8%	N=43	32%	N=175	38%	N=209	22%	N=124	100%	N=552

The National Citizen Survey™

Please rate each of the following characteristics as they relate to Cañon City as a whole:	Excellent		Good		Fair		Poor		Total	
Ease of travel by car in Cañon City	10%	N=55	43%	N=234	34%	N=187	13%	N=73	100%	N=550
Overall condition of City streets	1%	N=6	6%	N=36	26%	N=143	66%	N=365	100%	N=551
Ease of travel by bicycle in Cañon City	7%	N=27	20%	N=77	46%	N=177	26%	N=100	100%	N=382
Ease of walking in Cañon City	11%	N=57	33%	N=169	40%	N=204	16%	N=84	100%	N=513
Availability of paths and walking trails	22%	N=116	44%	N=229	27%	N=140	8%	N=42	100%	N=526
Air quality	30%	N=167	55%	N=303	12%	N=66	2%	N=14	100%	N=549
Cleanliness of Cañon City	10%	N=55	51%	N=284	29%	N=160	10%	N=54	100%	N=553
Overall appearance of Cañon City	7%	N=39	46%	N=254	36%	N=201	11%	N=58	100%	N=552
Public places where people want to spend time	10%	N=53	41%	N=223	37%	N=197	12%	N=64	100%	N=538
Variety of housing options	5%	N=27	22%	N=113	41%	N=209	31%	N=159	100%	N=507
Availability of affordable quality housing	5%	N=25	20%	N=98	40%	N=193	35%	N=170	100%	N=486
Fitness opportunities (including exercise classes and paths or trails, etc.)	17%	N=89	45%	N=234	31%	N=161	8%	N=40	100%	N=524
Recreational opportunities	19%	N=102	39%	N=211	28%	N=148	14%	N=74	100%	N=534
Availability of affordable quality food	10%	N=53	43%	N=235	31%	N=172	16%	N=87	100%	N=547
Availability of affordable quality health care	6%	N=34	30%	N=162	41%	N=224	22%	N=121	100%	N=541
Availability of preventive health services	7%	N=34	31%	N=161	40%	N=207	22%	N=111	100%	N=513
Availability of affordable quality mental health care	7%	N=23	24%	N=85	39%	N=141	31%	N=110	100%	N=360

Table 6: Question 6

Please rate each of the following characteristics as they relate to Cañon City as a whole:	Excellent		Good		Fair		Poor		Total	
Availability of affordable quality child care/preschool	6%	N=16	31%	N=88	42%	N=120	22%	N=64	100%	N=289
K-12 education	5%	N=20	48%	N=193	33%	N=135	14%	N=55	100%	N=403
Adult educational opportunities	5%	N=23	32%	N=141	42%	N=188	21%	N=92	100%	N=445
Opportunities to attend cultural/arts/music activities	8%	N=41	39%	N=194	41%	N=206	12%	N=59	100%	N=499
Opportunities to participate in religious or spiritual events and activities	21%	N=102	56%	N=272	17%	N=83	5%	N=25	100%	N=481
Employment opportunities	1%	N=3	11%	N=52	36%	N=178	53%	N=262	100%	N=495
Shopping opportunities	2%	N=13	13%	N=71	42%	N=224	43%	N=230	100%	N=539
Cost of living in Cañon City	5%	N=27	37%	N=197	42%	N=224	16%	N=86	100%	N=534
Overall quality of business and service establishments in Cañon City	2%	N=13	33%	N=177	46%	N=247	19%	N=99	100%	N=537
Vibrant downtown/commercial area	3%	N=16	20%	N=108	41%	N=217	36%	N=188	100%	N=530
Overall quality of new development in Cañon City	4%	N=22	19%	N=91	40%	N=192	37%	N=178	100%	N=482
Opportunities to participate in social events and activities	8%	N=42	38%	N=197	41%	N=212	12%	N=63	100%	N=514
Opportunities to volunteer	14%	N=66	51%	N=242	29%	N=135	6%	N=29	100%	N=471
Opportunities to participate in community matters	9%	N=42	43%	N=198	36%	N=166	12%	N=58	100%	N=463
Openness and acceptance of the community toward people of diverse backgrounds	4%	N=17	28%	N=131	36%	N=171	33%	N=156	100%	N=476
Neighborliness of residents in Cañon City	9%	N=50	34%	N=178	40%	N=212	17%	N=90	100%	N=529

Table 7: Question 7

Please indicate whether or not you have done each of the following in the last 12 months.	No		Yes		Total	
Made efforts to conserve water	17%	N=94	83%	N=456	100%	N=551
Made efforts to make your home more energy efficient	21%	N=117	79%	N=429	100%	N=546
Observed a code violation or other hazard in Cañon City	26%	N=142	74%	N=403	100%	N=545

The National Citizen Survey™

Please indicate whether or not you have done each of the following in the last 12 months.	No		Yes		Total	
Household member was a victim of a crime in Cañon City	86%	N=474	14%	N=75	100%	N=549
Reported a crime to the police in Cañon City	68%	N=376	32%	N=174	100%	N=549
Stocked supplies in preparation for an emergency	66%	N=360	34%	N=186	100%	N=546
Campaigned or advocated for an issue, cause or candidate	74%	N=403	26%	N=143	100%	N=546
Contacted the City of Cañon City (in-person, phone, email or web) for help or information	62%	N=342	38%	N=205	100%	N=547
Contacted Cañon City elected officials (in-person, phone, email or web) to express your opinion	83%	N=453	17%	N=95	100%	N=548

Table 8: Question 8

In the last 12 months, about how many times, if at all, have you or other household members done each of the following in Cañon City?	2 times a week or more		2-4 times a month		Once a month or less		Not at all		Total	
Used Cañon City recreation centers or their services	12%	N=68	17%	N=92	30%	N=161	41%	N=225	100%	N=545
Visited a neighborhood park or City park	21%	N=117	34%	N=184	36%	N=199	9%	N=49	100%	N=549
Used Cañon City public libraries or their services	5%	N=28	22%	N=120	27%	N=151	46%	N=253	100%	N=551
Participated in religious or spiritual activities in Cañon City	17%	N=94	21%	N=117	15%	N=83	47%	N=256	100%	N=550
Attended a City-sponsored event	3%	N=16	13%	N=72	49%	N=270	35%	N=191	100%	N=549
Carpooled with other adults or children instead of driving alone	11%	N=59	13%	N=72	13%	N=73	63%	N=345	100%	N=549
Walked or biked instead of driving	16%	N=85	18%	N=96	24%	N=133	42%	N=231	100%	N=545
Volunteered your time to some group/activity in Cañon City	11%	N=60	15%	N=85	23%	N=125	51%	N=283	100%	N=552
Participated in a club	7%	N=39	11%	N=61	13%	N=73	69%	N=377	100%	N=550
Talked to or visited with your immediate neighbors	45%	N=249	24%	N=133	24%	N=131	7%	N=40	100%	N=553
Done a favor for a neighbor	21%	N=114	29%	N=161	34%	N=188	16%	N=91	100%	N=553

Table 9: Question 9

Thinking about local public meetings (of local elected officials like City Council or County Commissioners, advisory boards, town halls, HOA, neighborhood watch, etc.), in the last 12 months, about how many times, if at all, have you or other household members attended or watched a local public meeting?	2 times a week or more		2-4 times a month		Once a month or less		Not at all		Total	
Attended a local public meeting	0%	N=2	3%	N=18	18%	N=96	79%	N=432	100%	N=548
Watched (online or on television) a local public meeting	1%	N=4	4%	N=20	16%	N=87	80%	N=436	100%	N=547

Table 10: Question 10

Please rate the quality of each of the following services in Cañon City:	Excellent		Good		Fair		Poor		Total	
Police services	20%	N=100	51%	N=263	19%	N=99	10%	N=50	100%	N=512
Fire services	43%	N=208	46%	N=226	10%	N=49	1%	N=6	100%	N=489
Ambulance or emergency medical services	32%	N=147	50%	N=231	16%	N=75	2%	N=11	100%	N=464
Crime prevention	10%	N=44	44%	N=201	35%	N=162	11%	N=52	100%	N=459
Fire prevention and education	17%	N=77	51%	N=232	25%	N=111	7%	N=32	100%	N=453
Traffic enforcement	8%	N=42	41%	N=204	34%	N=172	17%	N=86	100%	N=503
Street repair	0%	N=2	7%	N=38	21%	N=113	72%	N=387	100%	N=540
Street cleaning	4%	N=24	27%	N=146	43%	N=226	25%	N=135	100%	N=530
Street lighting	6%	N=33	32%	N=168	40%	N=213	22%	N=118	100%	N=533
Snow removal	5%	N=24	34%	N=178	35%	N=180	26%	N=135	100%	N=517
Sidewalk maintenance	1%	N=7	18%	N=91	32%	N=161	49%	N=248	100%	N=507

The National Citizen Survey™

Please rate the quality of each of the following services in Cañon City:	Excellent		Good		Fair		Poor		Total	
Traffic signal timing	2%	N=12	18%	N=99	32%	N=172	47%	N=251	100%	N=534
Garbage collection	30%	N=156	52%	N=270	16%	N=81	3%	N=16	100%	N=524
Recycling	14%	N=64	36%	N=171	28%	N=134	22%	N=102	100%	N=472
Yard waste pick-up	11%	N=44	29%	N=117	39%	N=157	22%	N=88	100%	N=406
Storm drainage	5%	N=23	24%	N=117	41%	N=195	30%	N=145	100%	N=481
Drinking water	24%	N=129	44%	N=234	22%	N=117	11%	N=57	100%	N=537
Sewer services	19%	N=96	53%	N=265	26%	N=127	2%	N=8	100%	N=496
Power (electric and/or gas) utility	16%	N=84	49%	N=264	26%	N=138	10%	N=53	100%	N=540
Utility billing	13%	N=68	46%	N=238	31%	N=162	10%	N=53	100%	N=521
City parks	24%	N=130	53%	N=283	18%	N=97	4%	N=22	100%	N=531
Recreation programs or classes	11%	N=45	42%	N=179	33%	N=140	15%	N=64	100%	N=428
Recreation centers or facilities	7%	N=28	35%	N=147	34%	N=145	24%	N=103	100%	N=424
Land use, planning and zoning	3%	N=11	23%	N=90	40%	N=159	34%	N=137	100%	N=396
Code enforcement (weeds, abandoned buildings, etc.)	1%	N=3	17%	N=79	36%	N=173	47%	N=225	100%	N=479
Animal control	9%	N=42	37%	N=170	36%	N=165	17%	N=78	100%	N=455
Economic development	1%	N=4	16%	N=72	42%	N=185	41%	N=182	100%	N=443
Health services	6%	N=30	36%	N=187	41%	N=210	17%	N=88	100%	N=514
Public library services	22%	N=98	46%	N=207	26%	N=116	7%	N=31	100%	N=452
Public information services	8%	N=35	34%	N=146	42%	N=180	16%	N=69	100%	N=430
Cable television	6%	N=26	26%	N=119	35%	N=163	33%	N=155	100%	N=463
Emergency preparedness (services that prepare the community for natural disasters or other emergency situations)	5%	N=17	35%	N=123	36%	N=128	24%	N=86	100%	N=354
Preservation of natural areas such as open space, farmlands and greenbelts	6%	N=28	44%	N=190	40%	N=172	10%	N=44	100%	N=435
Cañon City open space	6%	N=25	41%	N=177	43%	N=183	10%	N=44	100%	N=429
City-sponsored special events	11%	N=50	41%	N=186	37%	N=167	10%	N=47	100%	N=450
Overall customer service by Cañon City employees (police, receptionists, planners, etc.)	12%	N=62	46%	N=228	32%	N=158	10%	N=49	100%	N=497

Table 11: Question 11

Overall, how would you rate the quality of the services provided by each of the following?	Excellent		Good		Fair		Poor		Total	
The City of Cañon City	8%	N=40	43%	N=217	37%	N=190	12%	N=64	100%	N=510
The Federal Government	4%	N=18	27%	N=124	41%	N=191	28%	N=130	100%	N=463

Table 12: Question 12

Please rate the following categories of Cañon City government performance:	Excellent		Good		Fair		Poor		Total	
The value of services for the taxes paid to Cañon City	4%	N=20	29%	N=142	40%	N=196	27%	N=136	100%	N=493
The overall direction that Cañon City is taking	4%	N=17	26%	N=126	37%	N=181	33%	N=162	100%	N=487
The job Cañon City government does at welcoming citizen involvement	3%	N=13	27%	N=116	36%	N=155	34%	N=145	100%	N=429
Overall confidence in Cañon City government	4%	N=21	21%	N=104	39%	N=192	35%	N=170	100%	N=487
Generally acting in the best interest of the community	4%	N=20	25%	N=121	36%	N=178	35%	N=170	100%	N=489
Being honest	6%	N=25	32%	N=136	37%	N=158	25%	N=107	100%	N=426
Treating all residents fairly	4%	N=18	30%	N=130	37%	N=163	29%	N=126	100%	N=437

The National Citizen Survey™

Table 13: Question 13

Please rate how important, if at all, you think it is for the Cañon City community to focus on each of the following in the coming two years:	Essential		Very important		Somewhat important		Not at all important		Total	
Overall feeling of safety in Cañon City	46%	N=253	40%	N=223	12%	N=67	2%	N=11	100%	N=554
Overall ease of getting to the places you usually have to visit	23%	N=125	49%	N=269	25%	N=136	4%	N=20	100%	N=551
Quality of overall natural environment in Cañon City	24%	N=130	48%	N=263	26%	N=141	3%	N=15	100%	N=548
Overall "built environment" of Cañon City (including overall design, buildings and parks)	23%	N=124	42%	N=229	32%	N=177	3%	N=19	100%	N=549
Health and wellness opportunities in Cañon City	33%	N=182	45%	N=246	19%	N=104	3%	N=17	100%	N=548
Overall opportunities for education and enrichment	38%	N=209	40%	N=219	18%	N=97	5%	N=25	100%	N=550
Overall economic health of Cañon City	47%	N=256	40%	N=220	11%	N=61	2%	N=12	100%	N=550
Sense of community	31%	N=170	50%	N=276	17%	N=92	2%	N=11	100%	N=551

Table 14: Question 14

Please rate how important, if at all, you think it is that the City invest in each of the following in the next 12 months.	Essential		Very important		Somewhat important		Not at all important		Total	
Public safety	45%	N=246	37%	N=203	16%	N=85	2%	N=12	100%	N=546
Road improvements	62%	N=343	29%	N=160	8%	N=46	1%	N=5	100%	N=553
Parks and recreation improvements	16%	N=86	39%	N=211	40%	N=218	6%	N=31	100%	N=547
Future trail developments (bike/hiking trails)	14%	N=74	33%	N=183	42%	N=232	11%	N=60	100%	N=550
Downtown revitalization/economic development	26%	N=143	31%	N=172	30%	N=163	12%	N=68	100%	N=546
Overall aesthetics (signage, building design, facades)	16%	N=88	31%	N=169	40%	N=217	12%	N=67	100%	N=541
River corridor improvements	17%	N=93	37%	N=199	37%	N=201	9%	N=50	100%	N=544
Stormwater improvements	22%	N=121	39%	N=215	30%	N=165	8%	N=44	100%	N=545

Table 15: Question 15

Please indicate the extent to which you support or oppose the City taking the following actions regarding a Recreation/Aquatic Community Center.	Strongly support		Somewhat support		Somewhat oppose		Strongly oppose		Total	
Funding construction of a new Recreation/Aquatic Community Center with public and private partners and no tax increase	54%	N=292	33%	N=178	7%	N=40	6%	N=30	100%	N=540
Funding the rehabilitation and repairs of the existing Rec District pool with no tax increase	39%	N=207	43%	N=231	12%	N=64	7%	N=36	100%	N=537
Funding the rehabilitation and winter cover of the existing Rec District pool to allow year-round use with no tax increase	36%	N=195	41%	N=220	14%	N=78	9%	N=46	100%	N=539
Funding the rehabilitation and repair of the existing Rec District pool with a tax increase	15%	N=80	33%	N=178	22%	N=119	30%	N=162	100%	N=540

Table 16: Question 16

The City is proposing to increase the sales tax by 1% for 10 years to generate \$3.5 million annually to fund only street improvements and repairs, with such expenditures subject to an annual independent audit for public review. Please indicate the extent to which you support or oppose this proposal.	Percent	Number
Strongly support	43%	N=226
Somewhat support	32%	N=167
Somewhat oppose	9%	N=50
Strongly oppose	16%	N=86
Total	100%	N=529

The National Citizen Survey™

Table 17: Question 17

Please indicate the extent to which you support or oppose the City taking the following actions.	Strongly support		Somewhat support		Somewhat oppose		Strongly oppose		Total	
Funding the construction of a new fountain/splash pad at Centennial Park with public and private partners and no tax increase	36%	N=195	39%	N=210	15%	N=82	11%	N=58	100%	N=546
Funding the enhancement of existing playground equipment at Centennial Park with no tax increase	39%	N=211	42%	N=230	13%	N=69	6%	N=34	100%	N=544
Funding rehabilitation and repairs of the pond at Centennial Park with no tax increase	36%	N=198	44%	N=237	13%	N=71	7%	N=38	100%	N=543
Funding the construction of a new fountain/splash pad at Macon Plaza with public and private partners and no tax increase	31%	N=170	30%	N=161	21%	N=117	18%	N=98	100%	N=546

Table 18: Question 18

The City is attempting to reduce cultivation of marijuana in residential homes and areas. Please indicate the extent to which you support or oppose the adoption of zoning and special review conditions to permit the cultivation, but not the sale, of marijuana in <u>industrial</u> zones in the city.	Percent	Number
Strongly support	32%	N=175
Somewhat support	19%	N=103
Somewhat oppose	14%	N=77
Strongly oppose	35%	N=190
Total	100%	N=545

Table 19: Question 19

Please indicate the extent to which you support or oppose the adoption of zoning and special review conditions to permit the cultivation, but not the sale, of marijuana in <u>commercial</u> zones in the city.	Percent	Number
Strongly support	27%	N=147
Somewhat support	17%	N=92
Somewhat oppose	17%	N=94
Strongly oppose	38%	N=206
Total	100%	N=539

Table 20: Question D1

How often, if at all, do you do each of the following, considering all of the times you could?	Never		Rarely		Sometimes		Usually		Always		Total	
Recycle at home	12%	N=65	20%	N=112	26%	N=142	18%	N=102	24%	N=131	100%	N=553
Purchase goods or services from a business located in Cañon City	1%	N=6	3%	N=17	15%	N=83	59%	N=329	22%	N=121	100%	N=555
Eat at least 5 portions of fruits and vegetables a day	5%	N=28	17%	N=92	35%	N=194	32%	N=176	11%	N=61	100%	N=551
Participate in moderate or vigorous physical activity	5%	N=26	17%	N=95	30%	N=162	34%	N=187	14%	N=74	100%	N=544
Read or watch local news (via television, paper, computer, etc.)	6%	N=33	8%	N=46	16%	N=91	29%	N=160	40%	N=220	100%	N=550
Vote in local elections	10%	N=56	5%	N=26	8%	N=45	20%	N=112	57%	N=311	100%	N=550

The National Citizen Survey™

Table 21: Question D2

Would you say that in general your health is:	Percent	Number
Excellent	16%	N=91
Very good	39%	N=218
Good	29%	N=162
Fair	12%	N=64
Poor	3%	N=19
Total	100%	N=554

Table 22: Question D3

What impact, if any, do you think the economy will have on your family income in the next 6 months? Do you think the impact will be:	Percent	Number
Very positive	4%	N=19
Somewhat positive	15%	N=83
Neutral	55%	N=299
Somewhat negative	19%	N=106
Very negative	7%	N=39
Total	100%	N=546

Table 23: Question D4

What is your employment status?	Percent	Number
Working full time for pay	47%	N=262
Working part time for pay	10%	N=53
Unemployed, looking for paid work	3%	N=17
Unemployed, not looking for paid work	5%	N=26
Fully retired	35%	N=194
Total	100%	N=552

Table 24: Question D5

Do you work inside the boundaries of Cañon City?	Percent	Number
Yes, outside the home	45%	N=230
Yes, from home	6%	N=28
No	50%	N=256
Total	100%	N=515

Table 25: Question D6

How many years have you lived in Cañon City?	Percent	Number
Less than 2 years	9%	N=48
2 to 5 years	16%	N=86
6 to 10 years	15%	N=85
11 to 20 years	23%	N=125
More than 20 years	38%	N=209
Total	100%	N=554

The National Citizen Survey™

Table 26: Question D7

Which best describes the building you live in?	Percent	Number
One family house detached from any other houses	70%	N=391
Building with two or more homes (duplex, townhome, apartment or condominium)	19%	N=106
Mobile home	8%	N=44
Other	3%	N=15
Total	100%	N=556

Table 27: Question D8

Is this house, apartment or mobile home...	Percent	Number
Rented	33%	N=180
Owned	67%	N=373
Total	100%	N=553

Table 28: Question D9

About how much is your monthly housing cost for the place you live (including rent, mortgage payment, property tax, property insurance and homeowners' association (HOA) fees)?	Percent	Number
Less than \$300 per month	12%	N=62
\$300 to \$599 per month	19%	N=103
\$600 to \$999 per month	39%	N=206
\$1,000 to \$1,499 per month	19%	N=103
\$1,500 to \$2,499 per month	9%	N=49
\$2,500 or more per month	2%	N=12
Total	100%	N=535

Table 29: Question D10

Do any children 17 or under live in your household?	Percent	Number
No	66%	N=365
Yes	34%	N=188
Total	100%	N=553

Table 30: Question D11

Are you or any other members of your household aged 65 or older?	Percent	Number
No	62%	N=342
Yes	38%	N=212
Total	100%	N=554

The National Citizen Survey™

Table 31: Question D12

How much do you anticipate your household's total income before taxes will be for the current year? (Please include in your total income money from all sources for all persons living in your household.)	Percent	Number
Less than \$25,000	23%	N=125
\$25,000 to \$49,999	31%	N=165
\$50,000 to \$99,999	29%	N=156
\$100,000 to \$149,999	13%	N=68
\$150,000 or more	3%	N=18
Total	100%	N=531

Table 32: Question D13

Are you Spanish, Hispanic or Latino?	Percent	Number
No, not Spanish, Hispanic or Latino	93%	N=502
Yes, I consider myself to be Spanish, Hispanic or Latino	7%	N=37
Total	100%	N=539

Table 33: Question D14

What is your race? (Mark one or more races to indicate what race(s) you consider yourself to be.)	Percent	Number
American Indian or Alaskan Native	3%	N=14
Asian, Asian Indian or Pacific Islander	1%	N=4
Black or African American	1%	N=6
White	96%	N=520
Other	3%	N=15

Total may exceed 100% as respondents could select more than one option.

Table 34: Question D15

In which category is your age?	Percent	Number
18 to 24 years	1%	N=6
25 to 34 years	22%	N=121
35 to 44 years	10%	N=57
45 to 54 years	20%	N=108
55 to 64 years	13%	N=71
65 to 74 years	18%	N=98
75 years or older	16%	N=86
Total	100%	N=547

Table 35: Question D16

What is your sex?	Percent	Number
Female	54%	N=295
Male	46%	N=248
Total	100%	N=543

The National Citizen Survey™

Table 36: Question D17

Do you consider a cell phone or landline your primary telephone number?	Percent	Number
Cell	56%	N=306
Land line	24%	N=133
Both	14%	N=79
Total	100%	N=551

Responses including “don’t know”

The following pages contain a complete set of responses to each question on the survey, including the “don’t know” responses. The percent of respondents giving a particular response is shown followed by the number of respondents (denoted with “N=”).

Table 37: Question 1

Please rate each of the following aspects of quality of life in Cañon City:	Excellent		Good		Fair		Poor		Don't know		Total	
Cañon City as a place to live	18%	N=98	53%	N=296	24%	N=131	5%	N=29	0%	N=2	100%	N=556
Your neighborhood as a place to live	26%	N=147	48%	N=267	19%	N=108	6%	N=35	0%	N=1	100%	N=557
Cañon City as a place to raise children	16%	N=90	42%	N=232	19%	N=106	11%	N=62	11%	N=63	100%	N=553
Cañon City as a place to work	6%	N=32	26%	N=141	31%	N=171	27%	N=148	10%	N=54	100%	N=546
Cañon City as a place to visit	27%	N=148	41%	N=226	24%	N=130	7%	N=40	1%	N=8	100%	N=552
Cañon City as a place to retire	26%	N=141	46%	N=250	16%	N=90	6%	N=34	6%	N=34	100%	N=548
The overall quality of life in Cañon City	14%	N=78	51%	N=283	27%	N=149	7%	N=39	0%	N=3	100%	N=552

Table 38: Question 2

Please rate each of the following characteristics as they relate to Cañon City as a whole:	Excellent		Good		Fair		Poor		Don't know		Total	
Overall feeling of safety in Cañon City	20%	N=111	56%	N=314	19%	N=103	5%	N=27	0%	N=1	100%	N=556
Overall ease of getting to the places you usually have to visit	20%	N=114	48%	N=267	24%	N=132	7%	N=41	0%	N=2	100%	N=555
Quality of overall natural environment in Cañon City	25%	N=136	51%	N=281	19%	N=108	4%	N=23	1%	N=6	100%	N=554
Overall "built environment" of Cañon City (including overall design, buildings and parks)	8%	N=44	38%	N=212	41%	N=228	12%	N=68	0%	N=2	100%	N=553
Health and wellness opportunities in Cañon City	9%	N=52	37%	N=203	40%	N=219	13%	N=71	1%	N=7	100%	N=551
Overall opportunities for education and enrichment	7%	N=38	30%	N=164	39%	N=217	19%	N=102	5%	N=30	100%	N=551
Overall economic health of Cañon City	4%	N=21	19%	N=106	38%	N=210	33%	N=184	6%	N=33	100%	N=554
Sense of community	8%	N=43	32%	N=178	40%	N=219	18%	N=99	3%	N=14	100%	N=554
Overall image or reputation of Cañon City	6%	N=35	32%	N=180	39%	N=217	20%	N=112	2%	N=10	100%	N=553

Table 39: Question 3

Please indicate how likely or unlikely you are to do each of the following:	Very likely		Somewhat likely		Somewhat unlikely		Very unlikely		Don't know		Total	
Recommend living in Cañon City to someone who asks	29%	N=164	47%	N=261	11%	N=62	11%	N=63	1%	N=7	100%	N=556
Remain in Cañon City for the next five years	55%	N=304	26%	N=141	7%	N=40	10%	N=58	2%	N=8	100%	N=551

Table 40: Question 4

Please rate how safe or unsafe you feel:	Very safe		Somewhat safe		Neither safe nor unsafe		Somewhat unsafe		Very unsafe		Don't know		Total	
In your neighborhood during the day	61%	N=338	31%	N=173	5%	N=26	2%	N=12	1%	N=8	0%	N=0	100%	N=557
In Cañon City's downtown/commercial area during the day	49%	N=269	35%	N=196	8%	N=45	6%	N=36	0%	N=2	1%	N=7	100%	N=555

The National Citizen Survey™

Table 41: Question 5

Please rate each of the following characteristics as they relate to Cañon City as a whole:	Excellent		Good		Fair		Poor		Don't know		Total	
Traffic flow on major streets	5%	N=28	29%	N=160	41%	N=226	25%	N=142	0%	N=1	100%	N=556
Ease of public parking	8%	N=43	32%	N=175	38%	N=209	22%	N=124	0%	N=2	100%	N=554
Ease of travel by car in Cañon City	10%	N=55	42%	N=234	34%	N=187	13%	N=73	1%	N=3	100%	N=553
Overall condition of City streets	1%	N=6	6%	N=36	26%	N=143	66%	N=365	1%	N=5	100%	N=556
Ease of travel by bicycle in Cañon City	5%	N=27	14%	N=77	32%	N=177	18%	N=100	30%	N=165	100%	N=547
Ease of walking in Cañon City	10%	N=57	31%	N=169	37%	N=204	15%	N=84	6%	N=33	100%	N=546
Availability of paths and walking trails	21%	N=116	41%	N=229	25%	N=140	7%	N=42	5%	N=29	100%	N=555
Air quality	30%	N=167	55%	N=303	12%	N=66	2%	N=14	1%	N=5	100%	N=554
Cleanliness of Cañon City	10%	N=55	51%	N=284	29%	N=160	10%	N=54	0%	N=2	100%	N=554
Overall appearance of Cañon City	7%	N=39	46%	N=254	36%	N=201	11%	N=58	0%	N=1	100%	N=553
Public places where people want to spend time	10%	N=53	40%	N=223	36%	N=197	11%	N=64	3%	N=19	100%	N=556
Variety of housing options	5%	N=27	20%	N=113	38%	N=209	29%	N=159	8%	N=47	100%	N=554
Availability of affordable quality housing	5%	N=25	18%	N=98	35%	N=193	31%	N=170	12%	N=66	100%	N=553
Fitness opportunities (including exercise classes and paths or trails, etc.)	16%	N=89	42%	N=234	29%	N=161	7%	N=40	6%	N=31	100%	N=554
Recreational opportunities	18%	N=102	38%	N=211	27%	N=148	13%	N=74	4%	N=20	100%	N=555
Availability of affordable quality food	10%	N=53	43%	N=235	31%	N=172	16%	N=87	1%	N=4	100%	N=551
Availability of affordable quality health care	6%	N=34	29%	N=162	40%	N=224	22%	N=121	3%	N=15	100%	N=556
Availability of preventive health services	6%	N=34	29%	N=161	37%	N=207	20%	N=111	7%	N=40	100%	N=553
Availability of affordable quality mental health care	4%	N=23	15%	N=85	25%	N=141	20%	N=110	35%	N=194	100%	N=554

Table 42: Question 6

Please rate each of the following characteristics as they relate to Cañon City as a whole:	Excellent		Good		Fair		Poor		Don't know		Total	
Availability of affordable quality child care/preschool	3%	N=16	16%	N=88	22%	N=120	12%	N=64	47%	N=258	100%	N=547
K-12 education	4%	N=20	36%	N=193	25%	N=135	10%	N=55	26%	N=139	100%	N=542
Adult educational opportunities	4%	N=23	26%	N=141	34%	N=188	17%	N=92	19%	N=105	100%	N=550
Opportunities to attend cultural/arts/music activities	7%	N=41	36%	N=194	38%	N=206	11%	N=59	8%	N=46	100%	N=545
Opportunities to participate in religious or spiritual events and activities	19%	N=102	50%	N=272	15%	N=83	4%	N=25	12%	N=66	100%	N=547
Employment opportunities	0%	N=3	10%	N=52	32%	N=178	48%	N=262	10%	N=53	100%	N=547
Shopping opportunities	2%	N=13	13%	N=71	41%	N=224	42%	N=230	1%	N=8	100%	N=547
Cost of living in Cañon City	5%	N=27	36%	N=197	41%	N=224	16%	N=86	2%	N=10	100%	N=544
Overall quality of business and service establishments in Cañon City	2%	N=13	32%	N=177	45%	N=247	18%	N=99	2%	N=12	100%	N=550
Vibrant downtown/commercial area	3%	N=16	20%	N=108	40%	N=217	35%	N=188	3%	N=15	100%	N=545
Overall quality of new development in Cañon City	4%	N=22	17%	N=91	35%	N=192	33%	N=178	12%	N=63	100%	N=546
Opportunities to participate in social events and activities	8%	N=42	36%	N=197	39%	N=212	12%	N=63	6%	N=35	100%	N=549
Opportunities to volunteer	12%	N=66	44%	N=242	25%	N=135	5%	N=29	14%	N=78	100%	N=549
Opportunities to participate in community matters	8%	N=42	36%	N=198	30%	N=166	11%	N=58	15%	N=84	100%	N=548
Openness and acceptance of the community toward people of diverse backgrounds	3%	N=17	24%	N=131	31%	N=171	28%	N=156	13%	N=74	100%	N=550
Neighborliness of residents in Cañon City	9%	N=50	32%	N=178	38%	N=212	16%	N=90	4%	N=22	100%	N=551

The National Citizen Survey™

Table 43: Question 7

Please indicate whether or not you have done each of the following in the last 12 months.	No		Yes		Total	
Made efforts to conserve water	17%	N=94	83%	N=456	100%	N=551
Made efforts to make your home more energy efficient	21%	N=117	79%	N=429	100%	N=546
Observed a code violation or other hazard in Cañon City	26%	N=142	74%	N=403	100%	N=545
Household member was a victim of a crime in Cañon City	86%	N=474	14%	N=75	100%	N=549
Reported a crime to the police in Cañon City	68%	N=376	32%	N=174	100%	N=549
Stocked supplies in preparation for an emergency	66%	N=360	34%	N=186	100%	N=546
Campaigned or advocated for an issue, cause or candidate	74%	N=403	26%	N=143	100%	N=546
Contacted the City of Cañon City (in-person, phone, email or web) for help or information	62%	N=342	38%	N=205	100%	N=547
Contacted Cañon City elected officials (in-person, phone, email or web) to express your opinion	83%	N=453	17%	N=95	100%	N=548

Table 44: Question 8

In the last 12 months, about how many times, if at all, have you or other household members done each of the following in Cañon City?	2 times a week or more		2-4 times a month		Once a month or less		Not at all		Total	
Used Cañon City recreation centers or their services	12%	N=68	17%	N=92	30%	N=161	41%	N=225	100%	N=545
Visited a neighborhood park or City park	21%	N=117	34%	N=184	36%	N=199	9%	N=49	100%	N=549
Used Cañon City public libraries or their services	5%	N=28	22%	N=120	27%	N=151	46%	N=253	100%	N=551
Participated in religious or spiritual activities in Cañon City	17%	N=94	21%	N=117	15%	N=83	47%	N=256	100%	N=550
Attended a City-sponsored event	3%	N=16	13%	N=72	49%	N=270	35%	N=191	100%	N=549
Carpooled with other adults or children instead of driving alone	11%	N=59	13%	N=72	13%	N=73	63%	N=345	100%	N=549
Walked or biked instead of driving	16%	N=85	18%	N=96	24%	N=133	42%	N=231	100%	N=545
Volunteered your time to some group/activity in Cañon City	11%	N=60	15%	N=85	23%	N=125	51%	N=283	100%	N=552
Participated in a club	7%	N=39	11%	N=61	13%	N=73	69%	N=377	100%	N=550
Talked to or visited with your immediate neighbors	45%	N=249	24%	N=133	24%	N=131	7%	N=40	100%	N=553
Done a favor for a neighbor	21%	N=114	29%	N=161	34%	N=188	16%	N=91	100%	N=553

Table 45: Question 9

Thinking about local public meetings (of local elected officials like City Council or County Commissioners, advisory boards, town halls, HOA, neighborhood watch, etc.), in the last 12 months, about how many times, if at all, have you or other household members attended or watched a local public meeting?	2 times a week or more		2-4 times a month		Once a month or less		Not at all		Total	
Attended a local public meeting	0%	N=2	3%	N=18	18%	N=96	79%	N=432	100%	N=548
Watched (online or on television) a local public meeting	1%	N=4	4%	N=20	16%	N=87	80%	N=436	100%	N=547

Table 46: Question 10

Please rate the quality of each of the following services in Cañon City:	Excellent		Good		Fair		Poor		Don't know		Total	
Police services	18%	N=100	48%	N=263	18%	N=99	9%	N=50	7%	N=37	100%	N=549
Fire services	38%	N=208	41%	N=226	9%	N=49	1%	N=6	10%	N=56	100%	N=545
Ambulance or emergency medical services	27%	N=147	43%	N=231	14%	N=75	2%	N=11	15%	N=80	100%	N=544
Crime prevention	8%	N=44	37%	N=201	30%	N=162	10%	N=52	15%	N=81	100%	N=540
Fire prevention and education	14%	N=77	43%	N=232	21%	N=111	6%	N=32	16%	N=87	100%	N=540
Traffic enforcement	8%	N=42	37%	N=204	32%	N=172	16%	N=86	7%	N=41	100%	N=544
Street repair	0%	N=2	7%	N=38	21%	N=113	71%	N=387	1%	N=7	100%	N=547

The National Citizen Survey™

Please rate the quality of each of the following services in Cañon City:	Excellent		Good		Fair		Poor		Don't know		Total	
Street cleaning	4%	N=24	27%	N=146	42%	N=226	25%	N=135	3%	N=15	100%	N=545
Street lighting	6%	N=33	31%	N=168	39%	N=213	22%	N=118	2%	N=11	100%	N=544
Snow removal	4%	N=24	33%	N=178	33%	N=180	25%	N=135	4%	N=22	100%	N=539
Sidewalk maintenance	1%	N=7	17%	N=91	30%	N=161	45%	N=248	7%	N=39	100%	N=546
Traffic signal timing	2%	N=12	18%	N=99	32%	N=172	47%	N=251	1%	N=6	100%	N=540
Garbage collection	29%	N=156	50%	N=270	15%	N=81	3%	N=16	4%	N=20	100%	N=543
Recycling	12%	N=64	31%	N=171	25%	N=134	19%	N=102	13%	N=71	100%	N=543
Yard waste pick-up	8%	N=44	22%	N=117	29%	N=157	16%	N=88	25%	N=135	100%	N=541
Storm drainage	4%	N=23	22%	N=117	36%	N=195	27%	N=145	11%	N=57	100%	N=538
Drinking water	24%	N=129	43%	N=234	22%	N=117	10%	N=57	1%	N=7	100%	N=544
Sewer services	18%	N=96	49%	N=265	23%	N=127	2%	N=8	8%	N=44	100%	N=540
Power (electric and/or gas) utility	15%	N=84	48%	N=264	25%	N=138	10%	N=53	1%	N=7	100%	N=547
Utility billing	13%	N=68	44%	N=238	30%	N=162	10%	N=53	3%	N=16	100%	N=536
City parks	24%	N=130	52%	N=283	18%	N=97	4%	N=22	2%	N=13	100%	N=544
Recreation programs or classes	8%	N=45	33%	N=179	26%	N=140	12%	N=64	22%	N=117	100%	N=546
Recreation centers or facilities	5%	N=28	27%	N=147	27%	N=145	19%	N=103	22%	N=119	100%	N=542
Land use, planning and zoning	2%	N=11	17%	N=90	29%	N=159	25%	N=137	27%	N=146	100%	N=542
Code enforcement (weeds, abandoned buildings, etc.)	0%	N=3	15%	N=79	32%	N=173	41%	N=225	12%	N=68	100%	N=547
Animal control	8%	N=42	31%	N=170	31%	N=165	14%	N=78	16%	N=85	100%	N=540
Economic development	1%	N=4	13%	N=72	34%	N=185	34%	N=182	18%	N=95	100%	N=538
Health services	5%	N=30	34%	N=187	39%	N=210	16%	N=88	5%	N=29	100%	N=543
Public library services	18%	N=98	38%	N=207	21%	N=116	6%	N=31	16%	N=89	100%	N=542
Public information services	6%	N=35	27%	N=146	34%	N=180	13%	N=69	20%	N=109	100%	N=539
Cable television	5%	N=26	22%	N=119	30%	N=163	28%	N=155	15%	N=81	100%	N=545
Emergency preparedness (services that prepare the community for natural disasters or other emergency situations)	3%	N=17	23%	N=123	24%	N=128	16%	N=86	34%	N=184	100%	N=538
Preservation of natural areas such as open space, farmlands and greenbelts	5%	N=28	35%	N=190	32%	N=172	8%	N=44	20%	N=106	100%	N=540
Cañon City open space	5%	N=25	34%	N=177	35%	N=183	8%	N=44	19%	N=99	100%	N=528
City-sponsored special events	9%	N=50	35%	N=186	31%	N=167	9%	N=47	16%	N=86	100%	N=536
Overall customer service by Cañon City employees (police, receptionists, planners, etc.)	12%	N=62	43%	N=228	30%	N=158	9%	N=49	7%	N=39	100%	N=536

Table 47: Question 11

Overall, how would you rate the quality of the services provided by each of the following?	Excellent		Good		Fair		Poor		Don't know		Total	
The City of Cañon City	7%	N=40	40%	N=217	35%	N=190	12%	N=64	6%	N=32	100%	N=542
The Federal Government	3%	N=18	23%	N=124	35%	N=191	24%	N=130	15%	N=79	100%	N=542

Table 48: Question 12

Please rate the following categories of Cañon City government performance:	Excellent		Good		Fair		Poor		Don't know		Total	
The value of services for the taxes paid to Cañon City	4%	N=20	26%	N=142	36%	N=196	25%	N=136	10%	N=54	100%	N=547
The overall direction that Cañon City is taking	3%	N=17	23%	N=126	33%	N=181	30%	N=162	11%	N=57	100%	N=544
The job Cañon City government does at welcoming citizen involvement	2%	N=13	21%	N=116	28%	N=155	27%	N=145	22%	N=118	100%	N=547

The National Citizen Survey™

Please rate the following categories of Cañon City government performance:	Excellent		Good		Fair		Poor		Don't know		Total	
Overall confidence in Cañon City government	4%	N=21	19%	N=104	35%	N=192	31%	N=170	11%	N=58	100%	N=545
Generally acting in the best interest of the community	4%	N=20	22%	N=121	33%	N=178	31%	N=170	10%	N=55	100%	N=544
Being honest	5%	N=25	25%	N=136	29%	N=158	20%	N=107	22%	N=119	100%	N=544
Treating all residents fairly	3%	N=18	24%	N=130	30%	N=163	23%	N=126	20%	N=108	100%	N=545

Table 49: Question 13

Please rate how important, if at all, you think it is for the Cañon City community to focus on each of the following in the coming two years:	Essential		Very important		Somewhat important		Not at all important		Total	
Overall feeling of safety in Cañon City	46%	N=253	40%	N=223	12%	N=67	2%	N=11	100%	N=554
Overall ease of getting to the places you usually have to visit	23%	N=125	49%	N=269	25%	N=136	4%	N=20	100%	N=551
Quality of overall natural environment in Cañon City	24%	N=130	48%	N=263	26%	N=141	3%	N=15	100%	N=548
Overall "built environment" of Cañon City (including overall design, buildings and parks)	23%	N=124	42%	N=229	32%	N=177	3%	N=19	100%	N=549
Health and wellness opportunities in Cañon City	33%	N=182	45%	N=246	19%	N=104	3%	N=17	100%	N=548
Overall opportunities for education and enrichment	38%	N=209	40%	N=219	18%	N=97	5%	N=25	100%	N=550
Overall economic health of Cañon City	47%	N=256	40%	N=220	11%	N=61	2%	N=12	100%	N=550
Sense of community	31%	N=170	50%	N=276	17%	N=92	2%	N=11	100%	N=551

Table 50: Question 14

Please rate how important, if at all, you think it is that the City invest in each of the following in the next 12 months.	Essential		Very important		Somewhat important		Not at all important		Total	
Public safety	45%	N=246	37%	N=203	16%	N=85	2%	N=12	100%	N=546
Road improvements	62%	N=343	29%	N=160	8%	N=46	1%	N=5	100%	N=553
Parks and recreation improvements	16%	N=86	39%	N=211	40%	N=218	6%	N=31	100%	N=547
Future trail developments (bike/hiking trails)	14%	N=74	33%	N=183	42%	N=232	11%	N=60	100%	N=550
Downtown revitalization/economic development	26%	N=143	31%	N=172	30%	N=163	12%	N=68	100%	N=546
Overall aesthetics (signage, building design, facades)	16%	N=88	31%	N=169	40%	N=217	12%	N=67	100%	N=541
River corridor improvements	17%	N=93	37%	N=199	37%	N=201	9%	N=50	100%	N=544
Stormwater improvements	22%	N=121	39%	N=215	30%	N=165	8%	N=44	100%	N=545

Table 51: Question 15

Please indicate the extent to which you support or oppose the City taking the following actions regarding a Recreation/Aquatic Community Center.	Strongly support		Somewhat support		Somewhat oppose		Strongly oppose		Total	
Funding construction of a new Recreation/Aquatic Community Center with public and private partners and no tax increase	54%	N=292	33%	N=178	7%	N=40	6%	N=30	100%	N=540
Funding the rehabilitation and repairs of the existing Rec District pool with no tax increase	39%	N=207	43%	N=231	12%	N=64	7%	N=36	100%	N=537
Funding the rehabilitation and winter cover of the existing Rec District pool to allow year-round use with no tax increase	36%	N=195	41%	N=220	14%	N=78	9%	N=46	100%	N=539
Funding the rehabilitation and repair of the existing Rec District pool with a tax increase	15%	N=80	33%	N=178	22%	N=119	30%	N=162	100%	N=540

The National Citizen Survey™

Table 52: Question 16

The City is proposing to increase the sales tax by 1% for 10 years to generate \$3.5 million annually to fund only street improvements and repairs, with such expenditures subject to an annual independent audit for public review. Please indicate the extent to which you support or oppose this proposal.		Percent	Number
Strongly support		43%	N=226
Somewhat support		32%	N=167
Somewhat oppose		9%	N=50
Strongly oppose		16%	N=86
Total		100%	N=529

Table 53: Question 17

Please indicate the extent to which you support or oppose the City taking the following actions.	Strongly support		Somewhat support		Somewhat oppose		Strongly oppose		Total	
Funding the construction of a new fountain/splash pad at Centennial Park with public and private partners and no tax increase	36%	N=195	39%	N=210	15%	N=82	11%	N=58	100%	N=546
Funding the enhancement of existing playground equipment at Centennial Park with no tax increase	39%	N=211	42%	N=230	13%	N=69	6%	N=34	100%	N=544
Funding rehabilitation and repairs of the pond at Centennial Park with no tax increase	36%	N=198	44%	N=237	13%	N=71	7%	N=38	100%	N=543
Funding the construction of a new fountain/splash pad at Macon Plaza with public and private partners and no tax increase	31%	N=170	30%	N=161	21%	N=117	18%	N=98	100%	N=546

Table 54: Question 18

The City is attempting to reduce cultivation of marijuana in residential homes and areas. Please indicate the extent to which you support or oppose the adoption of zoning and special review conditions to permit the cultivation, but not the sale, of marijuana in industrial zones in the city.		Percent	Number
Strongly support		32%	N=175
Somewhat support		19%	N=103
Somewhat oppose		14%	N=77
Strongly oppose		35%	N=190
Total		100%	N=545

Table 55: Question 19

Please indicate the extent to which you support or oppose the adoption of zoning and special review conditions to permit the cultivation, but not the sale, of marijuana in commercial zones in the city.		Percent	Number
Strongly support		27%	N=147
Somewhat support		17%	N=92
Somewhat oppose		17%	N=94
Strongly oppose		38%	N=206
Total		100%	N=539

Table 56: Question D1

How often, if at all, do you do each of the following, considering all of the times you could?	Never		Rarely		Sometimes		Usually		Always		Total	
Recycle at home	12%	N=65	20%	N=112	26%	N=142	18%	N=102	24%	N=131	100%	N=553
Purchase goods or services from a business located in Cañon City	1%	N=6	3%	N=17	15%	N=83	59%	N=329	22%	N=121	100%	N=555
Eat at least 5 portions of fruits and vegetables a day	5%	N=28	17%	N=92	35%	N=194	32%	N=176	11%	N=61	100%	N=551
Participate in moderate or vigorous physical activity	5%	N=26	17%	N=95	30%	N=162	34%	N=187	14%	N=74	100%	N=544

The National Citizen Survey™

How often, if at all, do you do each of the following, considering all of the times you could?	Never		Rarely		Sometimes		Usually		Always		Total	
Read or watch local news (via television, paper, computer, etc.)	6%	N=33	8%	N=46	16%	N=91	29%	N=160	40%	N=220	100%	N=550
Vote in local elections	10%	N=56	5%	N=26	8%	N=45	20%	N=112	57%	N=311	100%	N=550

Table 57: Question D2

Would you say that in general your health is:	Percent	Number
Excellent	16%	N=91
Very good	39%	N=218
Good	29%	N=162
Fair	12%	N=64
Poor	3%	N=19
Total	100%	N=554

Table 58: Question D3

What impact, if any, do you think the economy will have on your family income in the next 6 months? Do you think the impact will be:	Percent	Number
Very positive	4%	N=19
Somewhat positive	15%	N=83
Neutral	55%	N=299
Somewhat negative	19%	N=106
Very negative	7%	N=39
Total	100%	N=546

Table 59: Question D4

What is your employment status?	Percent	Number
Working full time for pay	47%	N=262
Working part time for pay	10%	N=53
Unemployed, looking for paid work	3%	N=17
Unemployed, not looking for paid work	5%	N=26
Fully retired	35%	N=194
Total	100%	N=552

Table 60: Question D5

Do you work inside the boundaries of Cañon City?	Percent	Number
Yes, outside the home	45%	N=230
Yes, from home	6%	N=28
No	50%	N=256
Total	100%	N=515

The National Citizen Survey™

Table 61: Question D6

How many years have you lived in Cañon City?	Percent	Number
Less than 2 years	9%	N=48
2 to 5 years	16%	N=86
6 to 10 years	15%	N=85
11 to 20 years	23%	N=125
More than 20 years	38%	N=209
Total	100%	N=554

Table 62: Question D7

Which best describes the building you live in?	Percent	Number
One family house detached from any other houses	70%	N=391
Building with two or more homes (duplex, townhome, apartment or condominium)	19%	N=106
Mobile home	8%	N=44
Other	3%	N=15
Total	100%	N=556

Table 63: Question D8

Is this house, apartment or mobile home...	Percent	Number
Rented	33%	N=180
Owned	67%	N=373
Total	100%	N=553

Table 64: Question D9

About how much is your monthly housing cost for the place you live (including rent, mortgage payment, property tax, property insurance and homeowners' association (HOA) fees)?	Percent	Number
Less than \$300 per month	12%	N=62
\$300 to \$599 per month	19%	N=103
\$600 to \$999 per month	39%	N=206
\$1,000 to \$1,499 per month	19%	N=103
\$1,500 to \$2,499 per month	9%	N=49
\$2,500 or more per month	2%	N=12
Total	100%	N=535

Table 65: Question D10

Do any children 17 or under live in your household?	Percent	Number
No	66%	N=365
Yes	34%	N=188
Total	100%	N=553

The National Citizen Survey™

Table 66: Question D11

Are you or any other members of your household aged 65 or older?	Percent	Number
No	62%	N=342
Yes	38%	N=212
Total	100%	N=554

Table 67: Question D12

How much do you anticipate your household's total income before taxes will be for the current year? (Please include in your total income money from all sources for all persons living in your household.)	Percent	Number
Less than \$25,000	23%	N=125
\$25,000 to \$49,999	31%	N=165
\$50,000 to \$99,999	29%	N=156
\$100,000 to \$149,999	13%	N=68
\$150,000 or more	3%	N=18
Total	100%	N=531

Table 68: Question D13

Are you Spanish, Hispanic or Latino?	Percent	Number
No, not Spanish, Hispanic or Latino	93%	N=502
Yes, I consider myself to be Spanish, Hispanic or Latino	7%	N=37
Total	100%	N=539

Table 69: Question D14

What is your race? (Mark one or more races to indicate what race(s) you consider yourself to be.)	Percent	Number
American Indian or Alaskan Native	3%	N=14
Asian, Asian Indian or Pacific Islander	1%	N=4
Black or African American	1%	N=6
White	96%	N=520
Other	3%	N=15

Total may exceed 100% as respondents could select more than one option.

Table 70: Question D15

In which category is your age?	Percent	Number
18 to 24 years	1%	N=6
25 to 34 years	22%	N=121
35 to 44 years	10%	N=57
45 to 54 years	20%	N=108
55 to 64 years	13%	N=71
65 to 74 years	18%	N=98
75 years or older	16%	N=86
Total	100%	N=547

The National Citizen Survey™

Table 71: Question D16

What is your sex?	Percent	Number
Female	54%	N=295
Male	46%	N=248
Total	100%	N=543

Table 72: Question D17

Do you consider a cell phone or landline your primary telephone number?	Percent	Number
Cell	56%	N=306
Land line	24%	N=133
Both	14%	N=79
Total	100%	N=551

Appendix B: Benchmark Comparisons

Comparison Data

NRC's database of comparative resident opinion is comprised of resident perspectives gathered in surveys from over 500 communities whose residents evaluated the same kinds of topics on The National Citizen Survey™. The comparison evaluations are from the most recent survey completed in each community; most communities conduct surveys every year or in alternating years. NRC adds the latest results quickly upon survey completion, keeping the benchmark data fresh and relevant. The communities in the database represent a wide geographic and population range. The City of Cañon City chose to have comparisons made to the entire database.

Interpreting the Results

Ratings are compared when there are at least five communities in which a similar question was asked. Where comparisons are available, four columns are provided in the table. The first column is Cañon City's "percent positive." The percent positive is the combination of the top two most positive response options (i.e., "excellent" and "good," "very safe" and "somewhat safe," "essential" and "very important," etc.), or, in the case of resident behaviors/participation, the percent positive represents the proportion of respondents indicating "yes" or participating in an activity at least once a month. The second column is the rank assigned to Cañon City's rating among communities where a similar question was asked. The third column is the number of communities that asked a similar question. The final column shows the comparison of Cañon City's rating to the benchmark.

In that final column, Cañon City's results are noted as being "higher" than the benchmark, "lower" than the benchmark or "similar" to the benchmark, meaning that the average rating given by Cañon City residents is statistically similar to or different (greater or lesser) than the benchmark. More extreme differences are noted as "much higher" or "much lower."

Benchmark Database Characteristics	
Region	Percent
New England	3%
Middle Atlantic	5%
East North Central	15%
West North Central	13%
South Atlantic	22%
East South Central	3%
West South Central	7%
Mountain	16%
Pacific	16%
Population	Percent
Less than 10,000	10%
10,000 to 24,999	22%
25,000 to 49,999	23%
50,000 to 99,999	22%
100,000 or more	23%

National Benchmark Comparisons

Table 73: Community Characteristics General

	Percent positive	Rank	Number of communities in comparison	Comparison to benchmark
The overall quality of life in Cañon City	66%	361	422	Lower
Overall image or reputation of Cañon City	39%	284	319	Lower
Cañon City as a place to live	71%	318	359	Lower
Your neighborhood as a place to live	74%	222	281	Similar
Cañon City as a place to raise children	66%	295	351	Lower
Cañon City as a place to retire	76%	98	330	Similar
Overall appearance of Cañon City	53%	276	327	Lower

Table 74: Community Characteristics by Facet

		Percent positive	Rank	Number of communities in comparison	Comparison to benchmark
Safety	Overall feeling of safety in Cañon City	76%	184	269	Similar
	In your neighborhood during the day	92%	219	325	Similar
	In Cañon City's downtown/commercial area during the day	85%	187	277	Similar
Mobility	Overall ease of getting to the places you usually have to visit	69%	122	183	Similar
	Availability of paths and walking trails	66%	127	284	Similar
	Ease of walking in Cañon City	44%	224	263	Lower
	Ease of travel by bicycle in Cañon City	27%	231	266	Lower
	Ease of travel by car in Cañon City	53%	217	273	Similar
	Ease of public parking	40%	114	150	Similar
Natural Environment	Traffic flow on major streets	34%	268	323	Lower
	Quality of overall natural environment in Cañon City	76%	141	249	Similar
	Cleanliness of Cañon City	61%	194	250	Lower
Built Environment	Air quality	86%	71	227	Similar
	Overall "built environment" of Cañon City (including overall design, buildings and parks)	46%	140	172	Similar
	Overall quality of new development in Cañon City	23%	252	258	Much lower
	Availability of affordable quality housing	25%	229	275	Lower
	Variety of housing options	27%	236	253	Lower
	Public places where people want to spend time	51%	129	166	Similar
	Overall economic health of Cañon City	24%	169	178	Much lower
	Vibrant downtown/commercial area	23%	139	161	Lower
	Overall quality of business and service establishments in Cañon City	35%	236	247	Lower
	Cost of living in Cañon City	42%	108	175	Similar
Economy	Shopping opportunities	16%	256	269	Much lower
	Employment opportunities	11%	277	286	Much lower
	Cañon City as a place to visit	69%	78	188	Similar
	Cañon City as a place to work	35%	308	328	Much lower
	Health and wellness opportunities in Cañon City	47%	161	175	Lower
	Availability of affordable quality mental health care	30%	127	151	Similar
Recreation and Wellness	Availability of preventive health services	38%	196	211	Lower
	Availability of affordable quality health care	36%	216	235	Lower
	Availability of affordable quality food	53%	180	211	Similar
	Recreational opportunities	59%	187	277	Similar

The National Citizen Survey™

		Percent positive	Rank	Number of communities in comparison	Comparison to benchmark
	Fitness opportunities (including exercise classes and paths or trails, etc.)	62%	119	167	Similar
Education and Enrichment	Overall opportunities for education and enrichment	39%	163	174	Lower
	Opportunities to participate in religious or spiritual events and activities	78%	125	183	Similar
	Opportunities to attend cultural/arts/music activities	47%	175	266	Similar
	Adult educational opportunities	37%	140	156	Lower
	K-12 education	53%	197	238	Lower
	Availability of affordable quality child care/preschool	36%	201	231	Lower
	Opportunities to participate in social events and activities	46%	193	233	Similar
Community Engagement	Neighborhoodness of Cañon City	43%	154	167	Lower
	Openness and acceptance of the community toward people of diverse backgrounds	31%	262	262	Much lower
	Opportunities to participate in community matters	52%	204	248	Similar
	Opportunities to volunteer	65%	167	238	Similar

Table 75: Governance General

	Percent positive	Rank	Number of communities in comparison	Comparison to benchmark
Services provided by the City of Cañon City	50%	375	409	Lower
Overall customer service by Cañon City employees (police, receptionists, planners, etc.)	58%	313	345	Lower
Value of services for the taxes paid to Cañon City	33%	346	371	Lower
Overall direction that Cañon City is taking	29%	287	295	Lower
Job Cañon City government does at welcoming citizen involvement	30%	280	288	Lower
Overall confidence in Cañon City government	26%	168	175	Lower
Generally acting in the best interest of the community	29%	169	175	Lower
Being honest	38%	148	169	Lower
Treating all residents fairly	34%	158	174	Lower
Services provided by the Federal Government	31%	197	224	Similar

Table 76: Governance by Facet

		Percent positive	Rank	Number of communities in comparison	Comparison to benchmark
Safety	Police services	71%	352	417	Similar
	Fire services	89%	216	341	Similar
	Ambulance or emergency medical services	82%	280	320	Similar
	Crime prevention	53%	274	328	Lower
	Fire prevention and education	68%	222	261	Similar
	Animal control	47%	274	317	Similar
	Emergency preparedness (services that prepare the community for natural disasters or other emergency situations)	40%	250	258	Lower
Mobility	Traffic enforcement	49%	317	343	Lower
	Street repair	7%	387	389	Much lower
	Street cleaning	32%	285	296	Lower
	Street lighting	38%	277	289	Lower
	Snow removal	39%	260	274	Lower

The National Citizen Survey™

		Percent positive	Rank	Number of communities in comparison	Comparison to benchmark
	Sidewalk maintenance	19%	294	296	Much lower
	Traffic signal timing	21%	235	235	Much lower
	Garbage collection	82%	229	322	Similar
	Recycling	50%	319	333	Much lower
	Yard waste pick-up	40%	240	246	Much lower
	Drinking water	68%	202	311	Similar
	Preservation of natural areas such as open space, farmlands and greenbelts	50%	186	236	Similar
	Cañon City open space	47%	125	159	Similar
Natural Environment	Storm drainage	29%	333	336	Much lower
	Sewer services	73%	188	295	Similar
	Power (electric and/or gas) utility	64%	138	149	Similar
	Utility billing	59%	128	154	Similar
	Land use, planning and zoning	25%	269	275	Lower
	Code enforcement (weeds, abandoned buildings, etc.)	17%	338	341	Much lower
Built Environment	Cable television	31%	174	176	Lower
Economy	Economic development	17%	257	261	Much lower
	City parks	78%	204	304	Similar
	Recreation programs or classes	52%	296	322	Lower
Recreation and Wellness	Recreation centers or facilities	41%	251	257	Much lower
	Health services	42%	174	182	Lower
Education and Enrichment	City-sponsored special events	52%	155	190	Similar
	Public library services	68%	295	317	Lower
Community Engagement	Public information services	42%	255	264	Lower

Table 77: Participation General

	Percent positive	Rank	Number of communities in comparison	Comparison to benchmark
Sense of community	41%	251	281	Lower
Recommend living in Cañon City to someone who asks	77%	202	256	Similar
Remain in Cañon City for the next five years	82%	158	249	Similar
Contacted Cañon City (in-person, phone, email or web) for help or information	38%	235	287	Similar

Table 78: Participation by Facet

		Percent positive	Rank	Number of communities in comparison	Comparison to benchmark
	Stocked supplies in preparation for an emergency	34%	86	155	Similar
	Did NOT report a crime to the police	68%	148	171	Similar
Safety	Household member was NOT a victim of a crime	86%	178	249	Similar
	Carpooled with other adults or children instead of driving alone	37%	131	162	Similar
Mobility	Walked or biked instead of driving	58%	72	167	Similar
	Made efforts to conserve water	83%	72	156	Similar
	Made efforts to make your home more energy efficient	79%	60	158	Similar
Natural Environment	Recycle at home	68%	211	232	Lower
	Did NOT observe a code violation or other hazard in Cañon City	26%	162	162	Much lower
Built Environment	NOT experiencing housing costs stress	72%	79	227	Similar

The National Citizen Survey™

		Percent positive	Rank	Number of communities in comparison	Comparison to benchmark
Economy	Purchase goods or services from a business located in Cañon City	96%	106	164	Similar
	Economy will have positive impact on income	19%	206	229	Similar
	Work inside boundaries of Cañon City	50%	55	164	Similar
Recreation and Wellness	Used Cañon City recreation centers or their services	59%	91	216	Similar
	Visited a neighborhood park or City park	91%	39	249	Similar
	Eat at least 5 portions of fruits and vegetables a day	78%	133	160	Similar
	Participate in moderate or vigorous physical activity	78%	148	163	Similar
	In very good to excellent health	56%	136	163	Similar
	Used Cañon City public libraries or their services	54%	184	218	Lower
Education and Enrichment	Participated in religious or spiritual activities in Cañon City	53%	59	181	Similar
	Attended City-sponsored event	65%	28	167	Higher
	Campaigned or advocated for an issue, cause or candidate	26%	31	152	Similar
Community Engagement	Contacted Cañon City elected officials (in-person, phone, email or web) to express your opinion	17%	75	164	Similar
	Volunteered your time to some group/activity in Cañon City	49%	63	237	Similar
	Participated in a club	31%	69	217	Similar
	Talked to or visited with your immediate neighbors	93%	63	164	Similar
	Done a favor for a neighbor	84%	64	158	Similar
	Attended a local public meeting	21%	108	238	Similar
	Watched (online or on television) a local public meeting	20%	138	201	Similar
	Read or watch local news (via television, paper, computer, etc.)	86%	96	165	Similar
	Vote in local elections	85%	60	230	Similar

Communities included in national comparisons

The communities included in Cañon City's comparisons are listed on the following pages along with their population according to the 2010 Census.

Adams County, CO441,603
 Airway Heights city, WA 6,114
 Albany city, OR 50,158
 Albemarle County, VA..... 98,970
 Albert Lea city, MN..... 18,016
 Alexandria city, VA139,966
 Algonquin village, IL..... 30,046
 Aliso Viejo city, CA 47,823
 Altoona city, IA 14,541
 American Canyon city, CA..... 19,454
 Ames city, IA 58,965
 Andover CDP, MA..... 8,762
 Ankeny city, IA 45,582
 Ann Arbor city, MI.....113,934
 Annapolis city, MD 38,394
 Apache Junction city, AZ..... 35,840
 Apple Valley town, CA 69,135
 Arapahoe County, CO572,003
 Arkansas City city, AR..... 366

Arlington city, TX365,438
 Arlington County, VA207,627
 Arvada city, CO106,433
 Asheville city, NC 83,393
 Ashland city, OR 20,078
 Ashland town, VA..... 7,225
 Aspen city, CO 6,658
 Athens-Clarke County.....115,452
 Auburn city, AL 53,380
 Auburn city, WA..... 70,180
 Augusta CCD, GA134,777
 Aurora city, CO325,078
 Austin city, TX790,390
 Bainbridge Island city, WA..... 23,025
 Baltimore city, MD.....620,961
 Bartonville town, TX 1,469
 Battle Creek city, MI..... 52,347
 Bay City city, MI..... 34,932
 Baytown city, TX 71,802

The National Citizen Survey™

Bedford city, TX.....	46,979	College Park city, MD	30,413
Bedford town, MA	13,320	College Station city, TX	93,857
Bellevue city, WA	122,363	Colleyville city, TX	22,807
Bellingham city, WA	80,885	Collinsville city, IL	25,579
Beltrami County, MN	44,442	Columbia city, MO	108,500
Benbrook city, TX.....	21,234	Columbia city, SC.....	129,272
Bend city, OR.....	76,639	Columbia Falls city, MT.....	4,688
Bettendorf city, IA.....	33,217	Columbus city, WI.....	4,991
Billings city, MT.....	104,170	Commerce City city, CO	45,913
Blaine city, MN.....	57,186	Concord city, CA	122,067
Bloomfield Hills city, MI	3,869	Concord town, MA.....	17,668
Bloomington city, MN	82,893	Coon Rapids city, MN	61,476
Blue Springs city, MO	52,575	Copperas Cove city, TX.....	32,032
Boise City city, ID	205,671	Coronado city, CA	18,912
Boone County, KY	118,811	Corvallis city, OR.....	54,462
Boulder city, CO.....	97,385	Creve Coeur city, MO	17,833
Bowling Green city, KY	58,067	Cross Roads town, TX	1,563
Bozeman city, MT	37,280	Dacono city, CO	4,152
Brentwood city, MO.....	8,055	Dade City city, FL.....	6,437
Brentwood city, TN	37,060	Dakota County, MN	398,552
Brighton city, CO.....	33,352	Dallas city, OR	14,583
Brighton city, MI	7,444	Dallas city, TX.....	1,197,816
Bristol city, TN	26,702	Danville city, KY	16,218
Broken Arrow city, OK	98,850	Dardenne Prairie city, MO	11,494
Brookfield city, WI	37,920	Davenport city, IA.....	99,685
Brookline CDP, MA	58,732	Davidson town, NC.....	10,944
Broomfield city, CO	55,889	Decatur city, GA.....	19,335
Brownsburg town, IN	21,285	Del Mar city, CA.....	4,161
Burien city, WA.....	33,313	Delaware city, OH.....	34,753
Burleson city, TX.....	36,690	Delray Beach city, FL.....	60,522
Cabarrus County, NC.....	178,011	Denison city, TX.....	22,682
Cambridge city, MA.....	105,162	Denton city, TX.....	113,383
Cannon Beach city, OR.....	1,690	Denver city, CO.....	600,158
Cañon City city, CO	16,400	Derby city, KS.....	22,158
Canton city, SD.....	3,057	Des Moines city, IA	203,433
Cape Coral city, FL.....	154,305	Des Peres city, MO	8,373
Cape Girardeau city, MO.....	37,941	Destin city, FL.....	12,305
Carlisle borough, PA	18,682	Dothan city, AL	65,496
Carlsbad city, CA.....	105,328	Douglas County, CO	285,465
Carroll city, IA.....	10,103	Dover city, NH	29,987
Cartersville city, GA.....	19,731	Dublin city, CA	46,036
Cary town, NC	135,234	Dublin city, OH	41,751
Casper city, WY	55,316	Duluth city, MN.....	86,265
Castine town, ME.....	1,366	Duncanville city, TX.....	38,524
Castle Pines North city, CO	10,360	Durham city, NC	228,330
Castle Rock town, CO.....	48,231	Durham County, NC	267,587
Cedar Hill city, TX	45,028	Eagle town, CO.....	6,508
Cedar Rapids city, IA.....	126,326	East Baton Rouge Parish, LA.....	440,171
Celina city, TX.....	6,028	East Grand Forks city, MN	8,601
Centennial city, CO.....	100,377	East Lansing city, MI	48,579
Chambersburg borough, PA	20,268	Eau Claire city, WI	65,883
Chandler city, AZ	236,123	Eden Prairie city, MN.....	60,797
Chandler city, TX	2,734	Edgerton city, KS	1,671
Chanhassen city, MN.....	22,952	Edgewater city, CO	5,170
Chapel Hill town, NC	57,233	Edina city, MN	47,941
Charlotte city, NC.....	731,424	Edmond city, OK	81,405
Charlotte County, FL	159,978	Edmonds city, WA.....	39,709
Charlottesville city, VA.....	43,475	El Cerrito city, CA.....	23,549
Chattanooga city, TN.....	167,674	El Dorado County, CA.....	181,058
Chesterfield County, VA.....	316,236	El Paso city, TX.....	649,121
Chippewa Falls city, WI	13,661	Elk Grove city, CA	153,015
Citrus Heights city, CA.....	83,301	Elk River city, MN.....	22,974
Clackamas County, OR	375,992	Elko New Market city, MN	4,110
Clarendon Hills village, IL	8,427	Elmhurst city, IL.....	44,121
Clayton city, MO	15,939	Encinitas city, CA	59,518
Clearwater city, FL	107,685	Englewood city, CO	30,255
Cleveland Heights city, OH	46,121	Erie town, CO	18,135
Clinton city, SC	8,490	Escambia County, FL.....	297,619
Clive city, IA	15,447	Estes Park town, CO.....	5,858
Clovis city, CA.....	95,631	Fairview town, TX	7,248

The National Citizen Survey™

Farmersville city, TX.....	3,301	Indian Trail town, NC.....	33,518
Farmington Hills city, MI.....	79,740	Indianola city, IA.....	14,782
Fayetteville city, NC.....	200,564	Iowa City city, IA.....	67,862
Fishers town, IN.....	76,794	Irving city, TX.....	216,290
Flower Mound town, TX.....	64,669	Issaquah city, WA.....	30,434
Forest Grove city, OR.....	21,083	Jackson County, MI.....	160,248
Fort Collins city, CO.....	143,986	James City County, VA.....	67,009
Fort Smith city, AR.....	86,209	Jefferson County, CO.....	534,543
Fort Worth city, TX.....	741,206	Jefferson County, NY.....	116,229
Fountain Hills town, AZ.....	22,489	Johnson City city, TN.....	63,152
Franklin city, TN.....	62,487	Johnston city, IA.....	17,278
Fredericksburg city, VA.....	24,286	Jupiter town, FL.....	55,156
Fremont city, CA.....	214,089	Kansas City city, KS.....	145,786
Friendswood city, TX.....	35,805	Kansas City city, MO.....	459,787
Fruita city, CO.....	12,646	Keizer city, OR.....	36,478
Gahanna city, OH.....	33,248	Kenmore city, WA.....	20,460
Gaithersburg city, MD.....	59,933	Kennedale city, TX.....	6,763
Galveston city, TX.....	47,743	Kennett Square borough, PA.....	6,072
Gardner city, KS.....	19,123	Kettering city, OH.....	56,163
Geneva city, NY.....	13,261	Key West city, FL.....	24,649
Georgetown city, TX.....	47,400	King City city, CA.....	12,874
Gilbert town, AZ.....	208,453	King County, WA.....	1,931,249
Gillette city, WY.....	29,087	Kirkland city, WA.....	48,787
Glendora city, CA.....	50,073	Kirkwood city, MO.....	27,540
Glenview village, IL.....	44,692	Knoxville city, IA.....	7,313
Globe city, AZ.....	7,532	La Mesa city, CA.....	57,065
Golden city, CO.....	18,867	La Plata town, MD.....	8,753
Golden Valley city, MN.....	20,371	La Porte city, TX.....	33,800
Goodyear city, AZ.....	65,275	La Vista city, NE.....	15,758
Grafton village, WI.....	11,459	Lafayette city, CO.....	24,453
Grand Blanc city, MI.....	8,276	Laguna Beach city, CA.....	22,723
Grand Island city, NE.....	48,520	Laguna Hills city, CA.....	30,344
Grants Pass city, OR.....	34,533	Laguna Niguel city, CA.....	62,979
Grass Valley city, CA.....	12,860	Lake Oswego city, OR.....	36,619
Greeley city, CO.....	92,889	Lake Stevens city, WA.....	28,069
Greenville city, NC.....	84,554	Lake Worth city, FL.....	34,910
Greenwich town, CT.....	61,171	Lake Zurich village, IL.....	19,631
Greenwood Village city, CO.....	13,925	Lakeville city, MN.....	55,954
Greer city, SC.....	25,515	Lakewood city, CO.....	142,980
Guilford County, NC.....	488,406	Lakewood city, WA.....	58,163
Gunnison County, CO.....	15,324	Lane County, OR.....	351,715
Hailey city, ID.....	7,960	Lansing city, MI.....	114,297
Haines Borough, AK.....	2,508	Laramie city, WY.....	30,816
Hallandale Beach city, FL.....	37,113	Larimer County, CO.....	299,630
Hamilton city, OH.....	62,477	Las Cruces city, NM.....	97,618
Hanover County, VA.....	99,863	Las Vegas city, NV.....	583,756
Harrisburg city, SD.....	4,089	Lawrence city, KS.....	87,643
Harrisonburg city, VA.....	48,914	Lee's Summit city, MO.....	91,364
Harrisonville city, MO.....	10,019	Lehi city, UT.....	47,407
Hayward city, CA.....	144,186	Lenexa city, KS.....	48,190
Henderson city, NV.....	257,729	Lewis County, NY.....	27,087
Herndon town, VA.....	23,292	Lewiston city, ID.....	31,894
High Point city, NC.....	104,371	Lewisville city, TX.....	95,290
Highland Park city, IL.....	29,763	Libertyville village, IL.....	20,315
Highlands Ranch CDP, CO.....	96,713	Lincoln city, NE.....	258,379
Holland city, MI.....	33,051	Lindsborg city, KS.....	3,458
Honolulu County, HI.....	953,207	Littleton city, CO.....	41,737
Hooksett town, NH.....	13,451	Livermore city, CA.....	80,968
Hopkins city, MN.....	17,591	Lombard village, IL.....	43,165
Hopkinton town, MA.....	14,925	Lone Tree city, CO.....	10,218
Hoquiam city, WA.....	8,726	Long Grove village, IL.....	8,043
Horry County, SC.....	269,291	Longmont city, CO.....	86,270
Hudson city, OH.....	22,262	Longview city, TX.....	80,455
Hudsonville city, MI.....	7,116	Lonsdale city, MN.....	3,674
Huntersville town, NC.....	46,773	Los Alamos County, NM.....	17,950
Hurst city, TX.....	37,337	Louisville city, CO.....	18,376
Hutchinson city, MN.....	14,178	Lynchburg city, VA.....	75,568
Hutto city, TX.....	14,698	Lynnwood city, WA.....	35,836
Hyattsville city, MD.....	17,557	Macomb County, MI.....	840,978
Independence city, MO.....	116,830	Manhattan Beach city, CA.....	35,135

The National Citizen Survey™

Manhattan city, KS	52,281	Oshtemo charter township, MI	21,705
Mankato city, MN	39,309	Osego County, MI	24,164
Maple Grove city, MN	61,567	Overland Park city, KS	173,372
Martinez city, CA	35,824	Oviedo city, FL	33,342
Maryland Heights city, MO	27,472	Paducah city, KY	25,024
Marysville city, WA	60,020	Palm Beach Gardens city, FL	48,452
Matthews town, NC	27,198	Palm Coast city, FL	75,180
McAllen city, TX	129,877	Palo Alto city, CA	64,403
McDonough city, GA	22,084	Papillion city, NE	18,894
McMinnville city, OR	32,187	Paradise Valley town, AZ	12,820
Menlo Park city, CA	32,026	Park City city, UT	7,558
Mercer Island city, WA	22,699	Parker town, CO	45,297
Meridian charter township, MI	39,688	Parkland city, FL	23,962
Meridian city, ID	75,092	Pasadena city, CA	137,122
Merriam city, KS	11,003	Pasco city, WA	59,781
Mesa County, CO	146,723	Pasco County, FL	464,697
Miami Beach city, FL	87,779	Pearland city, TX	91,252
Miami city, FL	399,457	Peoria city, AZ	154,065
Middleton city, WI	17,442	Peoria city, IL	115,007
Midland city, MI	41,863	Peoria County, IL	186,494
Milford city, DE	9,559	Pflugerville city, TX	46,936
Milton city, GA	32,661	Phoenix city, AZ	1,445,632
Minneapolis city, MN	382,578	Pinehurst village, NC	13,124
Mission Viejo city, CA	93,305	Piqua city, OH	20,522
Modesto city, CA	201,165	Pitkin County, CO	17,148
Monterey city, CA	27,810	Plano city, TX	259,841
Montgomery County, VA	94,392	Platte City city, MO	4,691
Monticello city, UT	1,972	Plymouth city, MN	70,576
Monument town, CO	5,530	Pocatello city, ID	54,255
Mooreville town, NC	32,711	Polk County, IA	430,640
Morristown city, TN	29,137	Pompano Beach city, FL	99,845
Morrisville town, NC	18,576	Port Orange city, FL	56,048
Morro Bay city, CA	10,234	Portland city, OR	583,776
Mountain Village town, CO	1,320	Post Falls city, ID	27,574
Mountlake Terrace city, WA	19,909	Prince William County, VA	402,002
Murphy city, TX	17,708	Prior Lake city, MN	22,796
Naperville city, IL	141,853	Pueblo city, CO	106,595
Napoleon city, OH	8,749	Purcellville town, VA	7,727
Needham CDP, MA	28,886	Queen Creek town, AZ	26,361
New Braunfels city, TX	57,740	Radnor township, PA	31,531
New Brighton city, MN	21,456	Ramsey city, MN	23,668
New Hanover County, NC	202,667	Raymond town, ME	4,436
New Orleans city, LA	343,829	Raymore city, MO	19,206
New Smyrna Beach city, FL	22,464	Redmond city, WA	54,144
Newberg city, OR	22,068	Rehoboth Beach city, DE	1,327
Newport city, RI	24,672	Reno city, NV	225,221
Newport News city, VA	180,719	Reston CDP, VA	58,404
Newton city, IA	15,254	Richmond city, CA	103,701
Noblesville city, IN	51,969	Richmond Heights city, MO	8,603
Nogales city, AZ	20,837	Rifle city, CO	9,172
Norcross city, GA	9,116	Rio Rancho city, NM	87,521
Norfolk city, VA	242,803	River Falls city, WI	15,000
North Port city, FL	57,357	Riverside city, CA	303,871
North Richland Hills city, TX	63,343	Riverside city, MO	2,937
Northglenn city, CO	35,789	Roanoke County, VA	92,376
Novato city, CA	51,904	Rochester Hills city, MI	70,995
Novi city, MI	55,224	Rock Hill city, SC	66,154
O'Fallon city, IL	28,281	Rockville city, MD	61,209
O'Fallon city, MO	79,329	Rogers city, MN	8,597
Oak Park village, IL	51,878	Rolla city, MO	19,559
Oakland city, CA	390,724	Roselle village, IL	22,763
Oakley city, CA	35,432	Rosemount city, MN	21,874
Ogdensburg city, NY	11,128	Rosenberg city, TX	30,618
Oklahoma City city, OK	579,999	Roseville city, MN	33,660
Olathe city, KS	125,872	Round Rock city, TX	99,887
Old Town city, ME	7,840	Royal Oak city, MI	57,236
Olmsted County, MN	144,248	Saco city, ME	18,482
Olympia city, WA	46,478	Sahuarita town, AZ	25,259
Orland Park village, IL	56,767	Salida city, CO	5,236
Oshkosh city, WI	66,083	Sammamish city, WA	45,780

The National Citizen Survey™

San Anselmo town, CA	12,336	Tamarac city, FL	60,427
San Antonio city, TX	1,327,407	Temecula city, CA	100,097
San Carlos city, CA	28,406	Tempe city, AZ	161,719
San Diego city, CA	1,307,402	Temple city, TX	66,102
San Francisco city, CA	805,235	Texarkana city, TX	36,411
San Jose city, CA	945,942	The Woodlands CDP, TX	93,847
San Juan County, NM	130,044	Thornton city, CO	118,772
San Marcos city, CA	83,781	Thousand Oaks city, CA	126,683
San Marcos city, TX	44,894	Tigard city, OR	48,035
San Rafael city, CA	57,713	Tracy city, CA	82,922
Sanford city, FL	53,570	Trinidad CCD, CO	12,017
Sangamon County, IL	197,465	Tualatin city, OR	26,054
Santa Clarita city, CA	176,320	Tulsa city, OK	391,906
Santa Fe County, NM	144,170	Twin Falls city, ID	44,125
Santa Monica city, CA	89,736	Tyler city, TX	96,900
Sarasota County, FL	379,448	Umatilla city, OR	6,906
Savage city, MN	26,911	University Park city, TX	23,068
Schaumburg village, IL	74,227	Upper Arlington city, OH	33,771
Scott County, MN	129,928	Urbandale city, IA	39,463
Scottsdale city, AZ	217,385	Vail town, CO	5,305
Seaside city, CA	33,025	Vancouver city, WA	161,791
SeaTac city, WA	26,909	Vernon Hills village, IL	25,113
Sevierville city, TN	14,807	Vestavia Hills city, AL	34,033
Shawnee city, KS	62,209	Victoria city, MN	7,345
Sheboygan city, WI	49,288	Vienna town, VA	15,687
Shoreview city, MN	25,043	Virginia Beach city, VA	437,994
Shorewood city, MN	7,307	Wake Forest town, NC	30,117
Shorewood village, IL	15,615	Walnut Creek city, CA	64,173
Shorewood village, WI	13,162	Washington County, MN	238,136
Sierra Vista city, AZ	43,888	Washington town, NH	1,123
Sioux Center city, IA	7,048	Watauga city, TX	23,497
Sioux Falls city, SD	153,888	Wauwatosa city, WI	46,396
Skokie village, IL	64,784	Waverly city, IA	9,874
Snellville city, GA	18,242	Weddington town, NC	9,459
Snowmass Village town, CO	2,826	Wentzville city, MO	29,070
South Lake Tahoe city, CA	21,403	West Carrollton city, OH	13,143
Southborough town, MA	9,767	West Chester borough, PA	18,461
Southlake city, TX	26,575	West Des Moines city, IA	56,609
Spokane Valley city, WA	89,755	Western Springs village, IL	12,975
Spring Hill city, KS	5,437	Westerville city, OH	36,120
Springboro city, OH	17,409	Westlake town, TX	992
Springfield city, MO	159,498	Westminster city, CO	106,114
Springville city, UT	29,466	Weston town, MA	11,261
St. Augustine city, FL	12,975	Wheat Ridge city, CO	30,166
St. Charles city, IL	32,974	White House city, TN	10,255
St. Cloud city, FL	35,183	Wichita city, KS	382,368
St. Cloud city, MN	65,842	Williamsburg city, VA	14,068
St. Joseph city, MO	76,780	Willowbrook village, IL	8,540
St. Louis County, MN	200,226	Wilmington city, NC	106,476
St. Louis Park city, MN	45,250	Wilsonville city, OR	19,509
Stallings town, NC	13,831	Winchester city, VA	26,203
State College borough, PA	42,034	Windsor town, CO	18,644
Steamboat Springs city, CO	12,088	Windsor town, CT	29,044
Sterling Heights city, MI	129,699	Winnetka village, IL	12,187
Sugar Grove village, IL	8,997	Winston-Salem city, NC	229,617
Sugar Land city, TX	78,817	Winter Garden city, FL	34,568
Suisun City city, CA	28,111	Woodbury city, MN	61,961
Summit city, NJ	21,457	Woodland city, CA	55,468
Summit County, UT	36,324	Wrentham town, MA	10,955
Sunnyvale city, CA	140,081	Wyandotte County, KS	157,505
Surprise city, AZ	117,517	Yakima city, WA	91,067
Suwanee city, GA	15,355	York County, VA	65,464
Tacoma city, WA	198,397	Yorktown town, IN	9,405
Takoma Park city, MD	16,715	Yountville city, CA	2,933

Appendix C: Detailed Survey Methods

The National Citizen Survey (The NCS™), conducted by National Research Center, Inc., was developed to provide communities an accurate, affordable and easy way to assess and interpret resident opinion about important local topics. Standardization of common questions and survey methods provide the rigor to assure valid results, and each community has enough flexibility to construct a customized version of The NCS.

Results offer insight into residents' perspectives about the community as a whole, including local amenities, services, public trust, resident participation and other aspects of the community in order to support budgeting, land use and strategic planning and communication with residents. Resident demographic characteristics permit comparison to the Census as well as comparison of results for different subgroups of residents. The City of Cañon City funded this research. Please contact Tony O'Rourke, City Administrator for the City of Cañon City at thorourke@canoncity.org if you have any questions about the survey.

Survey Validity

The question of survey validity has two parts: 1) how can a community be confident that the results from those who completed the questionnaire are representative of the results that would have been obtained had the survey been administered to the entire population? and 2) how closely do the perspectives recorded on the survey reflect what residents really believe or do?

To answer the first question, the best survey research practices were used for the resources spent to ensure that the results from the survey respondents reflect the opinions of residents in the entire community. These practices include:

- Using a mail-out/mail-back methodology, which typically gets a higher response rate than phone for the same dollars spent. A higher response rate lessens the worry that those who did not respond are different than those who did respond.
- Selecting households at random within the community to receive the survey to ensure that the households selected to receive the survey are representative of the larger community.
- Over-sampling multi-family housing units to improve response from hard-to-reach, lower income or younger apartment dwellers.
- Selecting the respondent within the household using an unbiased sampling procedure; in this case, the "birthday method." The cover letter included an instruction requesting that the respondent in the household be the adult (18 years old or older) who most recently had a birthday, irrespective of year of birth.
- Contacting potential respondents three times to encourage response from people who may have different opinions or habits than those who would respond with only a single prompt.
- Inviting response in a compelling manner (using appropriate letterhead/logos and a signature of a visible leader) to appeal to recipients' sense of civic responsibility.
- Providing a pre-addressed, postage-paid return envelope.
- Offering the survey in Spanish or other language when requested by a given community.
- Weighting the results to reflect the demographics of the population.

The answer to the second question about how closely the perspectives recorded on the survey reflect what residents really believe or do is more complex. Resident responses to surveys are influenced by a variety of factors. For questions about service quality, residents' expectations for service quality play a role as well as the "objective" quality of the service provided, the way the resident perceives the entire community (that is, the context in which the service is provided), the scale on which the resident is asked to record his or her opinion and, of course, the opinion, itself, that a resident holds about the service. Similarly a resident's report of certain behaviors is colored by what he or she believes is the socially desirable response (e.g., reporting tolerant behaviors toward "oppressed groups," likelihood of voting for a tax increase for services to poor people, use of alternative modes of travel to work besides the single occupancy vehicle), his or her memory of the actual behavior (if it is not a question speculating about future actions, like a vote), his or her confidence that he or she can be honest without suffering any negative consequences (thus the need for anonymity) as well as the actual behavior itself.

How closely survey results come to recording the way a person really feels or behaves often is measured by the coincidence of reported behavior with observed current behavior (e.g., driving habits), reported intentions to behave with observed future behavior (e.g., voting choices) or reported opinions about current community quality

with objective characteristics of the community (e.g., feelings of safety correlated with rates of crime). There is a body of scientific literature that has investigated the relationship between reported behaviors and actual behaviors. Well-conducted surveys, by and large, do capture true respondent behaviors or intentions to act with great accuracy. Predictions of voting outcomes tend to be quite accurate using survey research, as do reported behaviors that are not about highly sensitive issues (e.g., family abuse or other illegal or morally sanctioned activities). For self-reports about highly sensitive issues, statistical adjustments can be made to correct for the respondents' tendency to report what they think the "correct" response should be.

Research on the correlation of resident opinion about service quality and "objective" ratings of service quality vary, with some showing stronger relationships than others. NRC's own research has demonstrated that residents who report the lowest ratings of street repair live in communities with objectively worse street conditions than those who report high ratings of street repair (based on road quality, delay in street repair, number of road repair employees). Similarly, the lowest rated fire services appear to be "objectively" worse than the highest rated fire services (expenditures per capita, response time, "professional" status of firefighters, breadth of services and training provided). Resident opinion commonly reflects objective performance data but is an important measure on its own. NRC principals have written, "If you collect trash three times a day but residents think that your trash haul is lousy, you still have a problem."

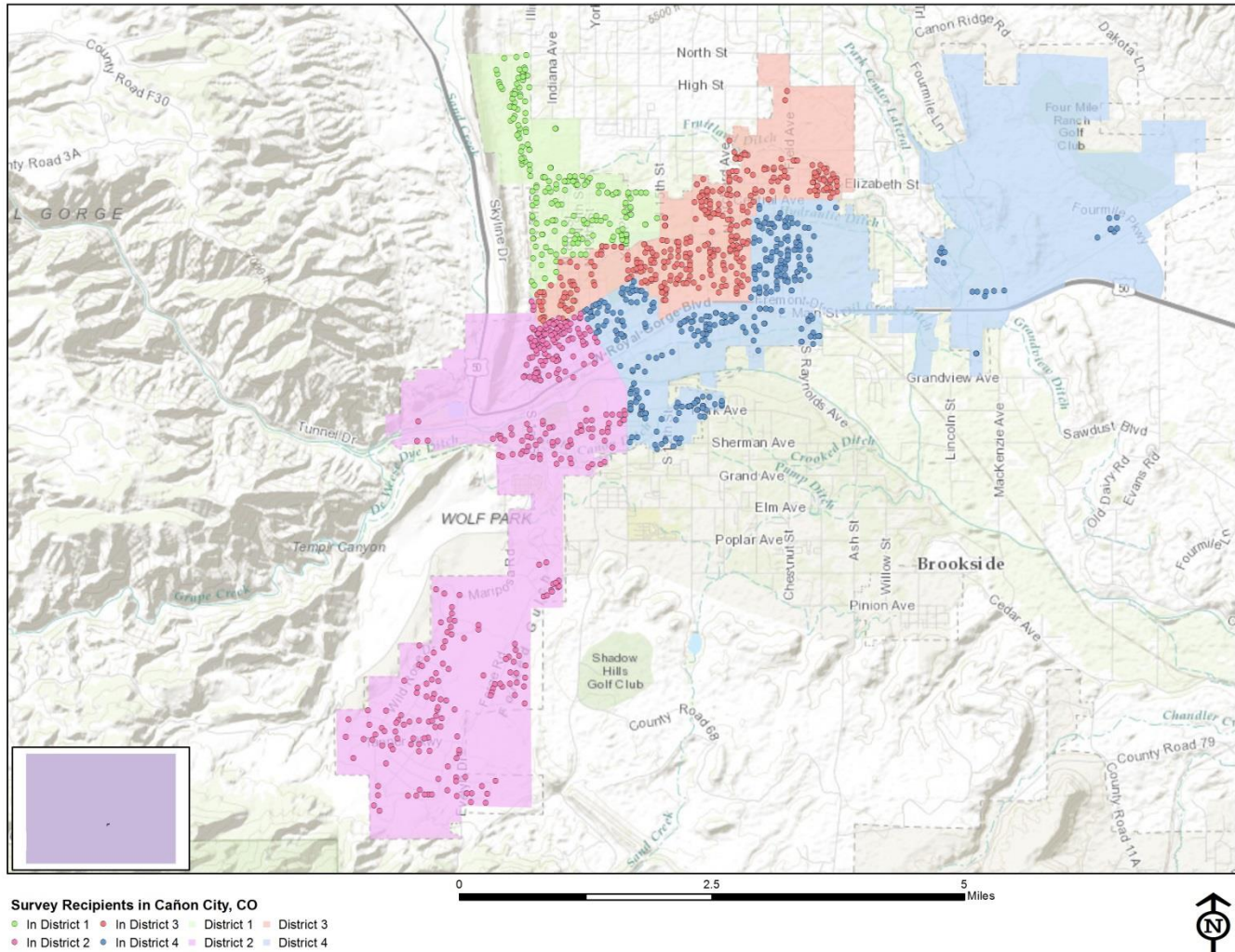
Survey Sampling

"Sampling" refers to the method by which households were chosen to receive the survey. All households within the City of Cañon City were eligible to participate in the survey. A list of all households within the zip codes serving Cañon City was purchased based on updated listings from the United States Postal Service. Since some of the zip codes that serve the City of Cañon City households may also serve addresses that lie outside of the community, the exact geographic location of each housing unit was compared to community boundaries using the most current municipal boundary file (updated on a quarterly basis) and addresses located outside of the City of Cañon City boundaries were removed from consideration. Each address identified as being within City boundaries was further identified as being within one of the four Council Districts.

To choose the 1,500 survey recipients, a systematic sampling method was applied to the list of households previously screened for geographic location. Systematic sampling is a procedure whereby a complete list of all possible households is culled, selecting every *Nth* one, giving each eligible household a known probability of selection, until the appropriate number of households is selected. Multi-family housing units were over sampled as residents of this type of housing typically respond at lower rates to surveys than do those in single-family housing units. Figure 1 displays a map of the households selected to receive the survey. In general, because of the random sampling techniques used, the displayed sampling density will closely mirror the overall housing unit density (which may be different from the population density). While the theory of probability assumes no bias in selection, there may be some minor variations in practice (meaning, an area with only 15% of the housing units might be sampled at an actual rate that is slightly above or below that).

An individual within each household was selected using the birthday method. The birthday method selects a person within the household by asking the "person whose birthday has most recently passed" to complete the questionnaire. The underlying assumption in this method is that day of birth has no relationship to the way people respond to surveys. This instruction was contained in the cover letter accompanying the questionnaire.

Figure 1: Location of Survey Recipients



Survey Administration and Response

Selected households received three mailings, one week apart, beginning on July 15, 2016. The first mailing was a prenotification postcard announcing the upcoming survey. The next mailing contained a letter from the Mayor inviting the household to participate, a questionnaire and a postage-paid return envelope. The final mailing contained a reminder letter, another survey and a postage-paid return envelope. The second cover letter asked those who had not completed the survey to do so and those who had already done so to refrain from turning in another survey. Respondents could opt to take the survey online as well. Completed surveys were collected over the following seven weeks.

About 5% of the 1,500 surveys mailed were returned because the housing unit was vacant or the postal service was unable to deliver the survey as addressed. Of the remaining 1,426 households that received the survey, 559 completed the survey, providing an overall response rate of 39%. Of the 559 completed surveys, 24 were completed online. Additionally, responses were tracked by geographic area; response rates by Council District ranged from 35% to 42%.

Table 79: Survey Response Rates by Council District

	Number mailed	Undeliverable	Eligible	Returned	Response rate
District 1	251	11	240	83	35%
District 2	345	28	317	129	41%
District 3	459	15	444	185	42%
District 4	445	20	425	162	38%
Overall	1,500	74	1,426	559	39%

Confidence Intervals

It is customary to describe the precision of estimates made from surveys by a “level of confidence” and accompanying “confidence interval” (or margin of error). A traditional level of confidence, and the one used here, is 95%. The 95% confidence interval can be any size and quantifies the sampling error or imprecision of the survey results because some residents’ opinions are relied on to estimate all residents’ opinions.¹

The margin of error for the City of Cañon City survey is no greater than plus or minus four percentage points around any given percent reported for the entire sample (559 completed surveys).

For subgroups of responses, the margin of error increases because the sample size for the subgroup is smaller. For subgroups of approximately 100 respondents, the margin of error is plus or minus 10 percentage points.

Survey Processing (Data Entry)

Upon receipt, completed surveys were assigned a unique identification number. Additionally, each survey was reviewed and “cleaned” as necessary. For example, a question may have asked a respondent to pick two items out of a list of five, but the respondent checked three; in this case, NRC would use protocols to randomly choose two of the three selected items for inclusion in the dataset.

All surveys then were entered twice into an electronic dataset; any discrepancies were resolved in comparison to the original survey form. Range checks as well as other forms of quality control were also performed.

Survey Data Weighting

The demographic characteristics of the survey sample were compared to those found in the 2010 Census and American Community Survey estimates for adults in the City of Cañon City. The primary objective of weighting survey data is to make the survey sample reflective of the larger population of the community. The characteristics used for weighting were housing tenure (rent or own), housing type (attached or detached), race, sex and age. The results of the weighting scheme are presented in the following table.

¹ A 95% confidence interval indicates that for every 100 random samples of this many residents, 95 of the confidence intervals created will include the “true” population response. This theory is applied in practice to mean that the “true” perspective of the target population lies within the confidence interval created for a single survey. For example, if 75% of residents rate a service as “excellent” or “good,” then the 4% margin of error (for the 95% confidence interval) indicates that the range of likely responses for the entire community is between 71% and 79%. This source of uncertainty is called sampling error. In addition to sampling error, other sources of error may affect any survey, including the non-response of residents with opinions different from survey responders. Though standardized on The NCS, on other surveys, differences in question wording, order, translation and data entry, as examples, can lead to somewhat varying results.

Table 80: Cañon City, CO 2016 Weighting Table

Characteristic	Population Norm	Unweighted Data	Weighted Data
Housing			
Rent home	33%	24%	33%
Own home	67%	76%	67%
Detached unit	78%	79%	78%
Attached unit	22%	21%	22%
Race and Ethnicity			
White	94%	94%	94%
Not white	6%	6%	6%
Not Hispanic	93%	97%	93%
Hispanic	7%	3%	7%
Sex and Age			
Female	54%	57%	54%
Male	46%	43%	46%
18-34 years of age	24%	7%	23%
35-54 years of age	31%	21%	30%
55+ years of age	45%	72%	47%
Females 18-34	12%	4%	13%
Females 35-54	16%	14%	18%
Females 55+	25%	39%	22%
Males 18-34	12%	3%	10%
Males 35-54	15%	7%	12%
Males 55+	20%	33%	24%
Council District			
Council District 1	17%	15%	18%
Council District 2	24%	23%	22%
Council District 3	31%	33%	32%
Council District 4	28%	29%	28%

Survey Data Analysis and Reporting

The survey dataset was analyzed using the Statistical Package for the Social Sciences (SPSS). For the most part, the percentages presented in the reports represent the “percent positive.” The percent positive is the combination of the top two most positive response options (i.e., “excellent” and “good,” “very safe” and “somewhat safe,” “essential” and “very important,” etc.), or, in the case of resident behaviors/participation, the percent positive represents the proportion of respondents indicating “yes” or participating in an activity at least once a month.

On many of the questions in the survey respondents may answer “don’t know.” The proportion of respondents giving this reply is shown in the full set of responses included in Appendix A. However, these responses have been removed from the analyses presented in the reports. In other words, the tables and graphs display the responses from respondents who had an opinion about a specific item.

Appendix D: Survey Materials



City of Cañon City
P.O. Box 1460
Cañon City, CO 81215

Presorted
First Class Mail
US Postage
PAID
Boulder, CO
Permit NO.94

Dear Cañon City Resident,

It won't take much of your time to make a big difference!

Your household has been randomly selected to participate in a survey about your community. Your survey will arrive in a few days.

Thank you for helping create a better City!

Sincerely,



Preston R. Troutman
Mayor

Dear Cañon City Resident,

It won't take much of your time to make a big difference!

Your household has been randomly selected to participate in a survey about your community. Your survey will arrive in a few days.

Thank you for helping create a better City!

Sincerely,



Preston R. Troutman
Mayor

Dear Cañon City Resident,

It won't take much of your time to make a big difference!

Your household has been randomly selected to participate in a survey about your community. Your survey will arrive in a few days.

Thank you for helping create a better City!

Sincerely,



Preston R. Troutman
Mayor

Dear Cañon City Resident,

It won't take much of your time to make a big difference!

Your household has been randomly selected to participate in a survey about your community. Your survey will arrive in a few days.

Thank you for helping create a better City!

Sincerely,



Preston R. Troutman
Mayor



City of Cañon City
P.O. Box 1460
Cañon City, CO 81215

Presorted
First Class Mail
US Postage
PAID
Boulder, CO
Permit NO. 94



City of Cañon City
P.O. Box 1460
Cañon City, CO 81215

Presorted
First Class Mail
US Postage
PAID
Boulder, CO
Permit NO. 94



City of Cañon City
P.O. Box 1460
Cañon City, CO 81215

Presorted
First Class Mail
US Postage
PAID
Boulder, CO
Permit NO. 94



City of Cañon City
P.O. Box 1460
Cañon City, CO 81215

Presorted
First Class Mail
US Postage
PAID
Boulder, CO
Permit NO. 94



City of Cañon City

***P.O. Box 1460 – 128 Main Street – Cañon City, CO 81215-1460
(719) 269-9011 – Fax: (719) 269-9017***

***Office of the
City Administrator***

July 2016

Dear Cañon City Resident:

Please help us shape the future of Cañon City! You have been selected at random to participate in the 2016 Cañon City Citizen Survey.

Please take a few minutes to fill out the enclosed survey. Your participation in this survey is very important – especially since your household is one of only a small number of households being surveyed. Your feedback will help Cañon City make decisions that affect our City.

A few things to remember:

- **Your responses are completely anonymous.**
- In order to hear from a diverse group of residents, the adult 18 years or older in your household who most recently had a birthday should complete this survey.
- **You may return the survey by mail in the enclosed postage-paid envelope, or you can complete the survey online at:**

www.n-r-c.com/survey/canonicalcity.htm

If you have any questions about the survey please call 719-276-5248.

Thank you for your time and participation!

Sincerely,

Preston R. Troutman
Mayor



City of Cañon City

***P.O. Box 1460 – 128 Main Street – Cañon City, CO 81215-1460
(719) 269-9011 – Fax: (719) 269-9017***

***Office of the
City Administrator***

July 2016

Dear Cañon City Resident:

Here's a second chance if you haven't already responded to the 2016 Cañon City Citizen Survey! **(If you completed it and sent it back, we thank you for your time and ask you to recycle this survey. Please do not respond twice.)**

Please help us shape the future of Cañon City! You have been selected at random to participate in the 2016 Cañon City Citizen Survey.

Please take a few minutes to fill out the enclosed survey. Your participation in this survey is very important – especially since your household is one of only a small number of households being surveyed. Your feedback will help Cañon City make decisions that affect our City.

A few things to remember:

- **Your responses are completely anonymous.**
- In order to hear from a diverse group of residents, the adult 18 years or older in your household who most recently had a birthday should complete this survey.
- **You may return the survey by mail in the enclosed postage-paid envelope, or you can complete the survey online at:**

www.n-r-c.com/survey/canonccity.htm

If you have any questions about the survey please call 719-276-5248.

Thank you for your time and participation!

Sincerely,

Preston R. Troutman
Mayor

The City of Cañon City 2016 Citizen Survey

Please complete this questionnaire if you are the adult (age 18 or older) in the household who most recently had a birthday. The adult's year of birth does not matter. Please select the response (by circling the number or checking the box) that most closely represents your opinion for each question. Your responses are anonymous and will be reported in group form only.

1. Please rate each of the following aspects of quality of life in Cañon City:

	<i>Excellent</i>	<i>Good</i>	<i>Fair</i>	<i>Poor</i>	<i>Don't know</i>
Cañon City as a place to live	1	2	3	4	5
Your neighborhood as a place to live.....	1	2	3	4	5
Cañon City as a place to raise children	1	2	3	4	5
Cañon City as a place to work	1	2	3	4	5
Cañon City as a place to visit.....	1	2	3	4	5
Cañon City as a place to retire	1	2	3	4	5
The overall quality of life in Cañon City	1	2	3	4	5

2. Please rate each of the following characteristics as they relate to Cañon City as a whole:

	<i>Excellent</i>	<i>Good</i>	<i>Fair</i>	<i>Poor</i>	<i>Don't know</i>
Overall feeling of safety in Cañon City	1	2	3	4	5
Overall ease of getting to the places you usually have to visit	1	2	3	4	5
Quality of overall natural environment in Cañon City.....	1	2	3	4	5
Overall "built environment" of Cañon City (including overall design, buildings and parks)	1	2	3	4	5
Health and wellness opportunities in Cañon City	1	2	3	4	5
Overall opportunities for education and enrichment.....	1	2	3	4	5
Overall economic health of Cañon City	1	2	3	4	5
Sense of community.....	1	2	3	4	5
Overall image or reputation of Cañon City.....	1	2	3	4	5

3. Please indicate how likely or unlikely you are to do each of the following:

	<i>Very likely</i>	<i>Somewhat likely</i>	<i>Somewhat unlikely</i>	<i>Very unlikely</i>	<i>Don't know</i>
Recommend living in Cañon City to someone who asks.....	1	2	3	4	5
Remain in Cañon City for the next five years	1	2	3	4	5

4. Please rate how safe or unsafe you feel:

	<i>Very safe</i>	<i>Somewhat safe</i>	<i>Neither safe nor unsafe</i>	<i>Somewhat unsafe</i>	<i>Very unsafe</i>	<i>Don't know</i>
In your neighborhood during the day.....	1	2	3	4	5	6
In Cañon City's downtown/commercial area during the day	1	2	3	4	5	6

5. Please rate each of the following characteristics as they relate to Cañon City as a whole:

	<i>Excellent</i>	<i>Good</i>	<i>Fair</i>	<i>Poor</i>	<i>Don't know</i>
Traffic flow on major streets	1	2	3	4	5
Ease of public parking.....	1	2	3	4	5
Ease of travel by car in Cañon City.....	1	2	3	4	5
Overall condition of City streets	1	2	3	4	5
Ease of travel by bicycle in Cañon City	1	2	3	4	5
Ease of walking in Cañon City.....	1	2	3	4	5
Availability of paths and walking trails	1	2	3	4	5
Air quality	1	2	3	4	5
Cleanliness of Cañon City	1	2	3	4	5
Overall appearance of Cañon City	1	2	3	4	5
Public places where people want to spend time	1	2	3	4	5
Variety of housing options	1	2	3	4	5
Availability of affordable quality housing	1	2	3	4	5
Fitness opportunities (including exercise classes and paths or trails, etc.)	1	2	3	4	5
Recreational opportunities.....	1	2	3	4	5
Availability of affordable quality food.....	1	2	3	4	5
Availability of affordable quality health care	1	2	3	4	5
Availability of preventive health services	1	2	3	4	5
Availability of affordable quality mental health care	1	2	3	4	5

6. Please rate each of the following characteristics as they relate to Cañon City as a whole:

	<i>Excellent</i>	<i>Good</i>	<i>Fair</i>	<i>Poor</i>	<i>Don't know</i>
Availability of affordable quality child care/preschool	1	2	3	4	5
K-12 education	1	2	3	4	5
Adult educational opportunities.....	1	2	3	4	5
Opportunities to attend cultural/arts/music activities	1	2	3	4	5
Opportunities to participate in religious or spiritual events and activities	1	2	3	4	5
Employment opportunities	1	2	3	4	5
Shopping opportunities.....	1	2	3	4	5
Cost of living in Cañon City	1	2	3	4	5
Overall quality of business and service establishments in Cañon City.....	1	2	3	4	5
Vibrant downtown/commercial area	1	2	3	4	5
Overall quality of new development in Cañon City	1	2	3	4	5
Opportunities to participate in social events and activities	1	2	3	4	5
Opportunities to volunteer.....	1	2	3	4	5
Opportunities to participate in community matters	1	2	3	4	5
Openness and acceptance of the community toward people of diverse backgrounds	1	2	3	4	5
Neighborliness of residents in Cañon City.....	1	2	3	4	5

7. Please indicate whether or not you have done each of the following in the last 12 months.

	<i>No</i>	<i>Yes</i>
Made efforts to conserve water	1	2
Made efforts to make your home more energy efficient	1	2
Observed a code violation or other hazard in Cañon City (weeds, abandoned buildings, etc.)	1	2
Household member was a victim of a crime in Cañon City	1	2
Reported a crime to the police in Cañon City.....	1	2
Stocked supplies in preparation for an emergency	1	2
Campaigned or advocated for an issue, cause or candidate	1	2
Contacted the City of Cañon City (in-person, phone, email or web) for help or information.....	1	2
Contacted Cañon City elected officials (in-person, phone, email or web) to express your opinion	1	2

8. In the last 12 months, about how many times, if at all, have you or other household members done each of the following in Cañon City?

	<i>2 times a week or more</i>	<i>2-4 times a month</i>	<i>Once a month or less</i>	<i>Not at all</i>
Used Cañon City recreation centers or their services	1	2	3	4
Visited a neighborhood park or City park	1	2	3	4
Used Cañon City public libraries or their services.....	1	2	3	4
Participated in religious or spiritual activities in Cañon City.....	1	2	3	4
Attended a City-sponsored event	1	2	3	4
Carpooled with other adults or children instead of driving alone.....	1	2	3	4
Walked or biked instead of driving	1	2	3	4
Volunteered your time to some group/activity in Cañon City.....	1	2	3	4
Participated in a club	1	2	3	4
Talked to or visited with your immediate neighbors	1	2	3	4
Done a favor for a neighbor.....	1	2	3	4

9. Thinking about local public meetings (of local elected officials like City Council or County Commissioners, advisory boards, town halls, HOA, neighborhood watch, etc.), in the last 12 months, about how many times, if at all, have you or other household members attended or watched a local public meeting?

	<i>2 times a week or more</i>	<i>2-4 times a month</i>	<i>Once a month or less</i>	<i>Not at all</i>
<u>Attended</u> a local public meeting	1	2	3	4
<u>Watched</u> (online or on television) a local public meeting.....	1	2	3	4

The City of Cañon City 2016 Citizen Survey

10. Please rate the quality of each of the following services in Cañon City:

	<i>Excellent</i>	<i>Good</i>	<i>Fair</i>	<i>Poor</i>	<i>Don't know</i>
Police services	1	2	3	4	5
Fire services.....	1	2	3	4	5
Ambulance or emergency medical services	1	2	3	4	5
Crime prevention.....	1	2	3	4	5
Fire prevention and education.....	1	2	3	4	5
Traffic enforcement	1	2	3	4	5
Street repair	1	2	3	4	5
Street cleaning	1	2	3	4	5
Street lighting.....	1	2	3	4	5
Snow removal	1	2	3	4	5
Sidewalk maintenance	1	2	3	4	5
Traffic signal timing.....	1	2	3	4	5
Garbage collection.....	1	2	3	4	5
Recycling	1	2	3	4	5
Yard waste pick-up	1	2	3	4	5
Storm drainage	1	2	3	4	5
Drinking water.....	1	2	3	4	5
Sewer services	1	2	3	4	5
Power (electric and/or gas) utility	1	2	3	4	5
Utility billing	1	2	3	4	5
City parks.....	1	2	3	4	5
Recreation programs or classes.....	1	2	3	4	5
Recreation centers or facilities	1	2	3	4	5
Land use, planning and zoning.....	1	2	3	4	5
Code enforcement (weeds, abandoned buildings, etc.)	1	2	3	4	5
Animal control	1	2	3	4	5
Economic development	1	2	3	4	5
Health services	1	2	3	4	5
Public library services	1	2	3	4	5
Public information services	1	2	3	4	5
Cable television.....	1	2	3	4	5
Emergency preparedness (services that prepare the community for natural disasters or other emergency situations).....	1	2	3	4	5
Preservation of natural areas such as open space, farmlands and greenbelts.....	1	2	3	4	5
Cañon City open space.....	1	2	3	4	5
City-sponsored special events	1	2	3	4	5
Overall customer service by Cañon City employees (police, receptionists, planners, etc.).....	1	2	3	4	5

11. Overall, how would you rate the quality of the services provided by each of the following?

	<i>Excellent</i>	<i>Good</i>	<i>Fair</i>	<i>Poor</i>	<i>Don't know</i>
The City of Cañon City	1	2	3	4	5
The Federal Government	1	2	3	4	5

12. Please rate the following categories of Cañon City government performance:

	<i>Excellent</i>	<i>Good</i>	<i>Fair</i>	<i>Poor</i>	<i>Don't know</i>
The value of services for the taxes paid to Cañon City.....	1	2	3	4	5
The overall direction that Cañon City is taking	1	2	3	4	5
The job Cañon City government does at welcoming citizen involvement	1	2	3	4	5
Overall confidence in Cañon City government	1	2	3	4	5
Generally acting in the best interest of the community	1	2	3	4	5
Being honest.....	1	2	3	4	5
Treating all residents fairly	1	2	3	4	5

13. Please rate how important, if at all, you think it is for the Cañon City community to focus on each of the following in the coming two years:

	<i>Essential</i>	<i>Very important</i>	<i>Somewhat important</i>	<i>Not at all important</i>
Overall feeling of safety in Cañon City.....	1	2	3	4
Overall ease of getting to the places you usually have to visit	1	2	3	4
Quality of overall natural environment in Cañon City.....	1	2	3	4
Overall “built environment” of Cañon City (including overall design, buildings and parks)	1	2	3	4
Health and wellness opportunities in Cañon City	1	2	3	4
Overall opportunities for education and enrichment.....	1	2	3	4
Overall economic health of Cañon City	1	2	3	4
Sense of community	1	2	3	4

14. Please rate how important, if at all, you think it is that the City invest in each of the following in the next 12 months.

	<i>Essential</i>	<i>Very important</i>	<i>Somewhat important</i>	<i>Not at all important</i>
Public safety	1	2	3	4
Road improvements.....	1	2	3	4
Parks and recreation improvements.....	1	2	3	4
Future trail developments (bike/hiking trails).....	1	2	3	4
Downtown revitalization/economic development.....	1	2	3	4
Overall aesthetics (signage, building design, facades).....	1	2	3	4
River corridor improvements	1	2	3	4
Stormwater improvements.....	1	2	3	4

15. Please indicate the extent to which you support or oppose the City taking the following actions regarding a Recreation/Aquatic Community Center.

	<i>Strongly support</i>	<i>Somewhat support</i>	<i>Somewhat oppose</i>	<i>Strongly oppose</i>
Funding construction of a new Recreation/Aquatic Community Center with public and private partners and no tax increase.....	1	2	3	4
Funding the rehabilitation and repairs of the existing Rec District pool with no tax increase.....	1	2	3	4
Funding the rehabilitation and winter cover of the existing Rec District pool to allow year-round use with no tax increase	1	2	3	4
Funding the rehabilitation and repair of the existing Rec District pool with a tax increase.....	1	2	3	4

16. The City is proposing to increase the sales tax by 1% for 10 years to generate \$3.5 million annually to fund only street improvements and repairs, with such expenditures subject to an annual independent audit for public review. Please indicate the extent to which you support or oppose this proposal.

☐ Strongly support ☐ Somewhat support ☐ Somewhat oppose ☐ Strongly oppose

17. Please indicate the extent to which you support or oppose the City taking the following actions.

	<i>Strongly support</i>	<i>Somewhat support</i>	<i>Somewhat oppose</i>	<i>Strongly oppose</i>
Funding the construction of a new fountain/splash pad at Centennial Park with public and private partners and no tax increase.....	1	2	3	4
Funding the enhancement of existing playground equipment at Centennial Park with no tax increase.....	1	2	3	4
Funding rehabilitation and repairs of the pond at Centennial Park with no tax increase.....	1	2	3	4
Funding the construction of a new fountain/splash pad at Macon Plaza with public and private partners and no tax increase.....	1	2	3	4

18. The City is attempting to reduce cultivation of marijuana in residential homes and areas. Please indicate the extent to which you support or oppose the adoption of zoning and special review conditions to permit the cultivation, but not the sale, of marijuana in industrial zones in the city.

☐ Strongly support ☐ Somewhat support ☐ Somewhat oppose ☐ Strongly oppose

19. Please indicate the extent to which you support or oppose the adoption of zoning and special review conditions to permit the cultivation, but not the sale, of marijuana in commercial zones in the city.

☐ Strongly support ☐ Somewhat support ☐ Somewhat oppose ☐ Strongly oppose

The City of Cañon City 2016 Citizen Survey

Our last questions are about you and your household. Again, all of your responses to this survey are completely anonymous and will be reported in group form only.

D1. How often, if at all, do you do each of the following, considering all of the times you could?

	<i>Never</i>	<i>Rarely</i>	<i>Sometimes</i>	<i>Usually</i>	<i>Always</i>
Recycle at home	1	2	3	4	5
Purchase goods or services from a business located in Cañon City.....	1	2	3	4	5
Eat at least 5 portions of fruits and vegetables a day	1	2	3	4	5
Participate in moderate or vigorous physical activity	1	2	3	4	5
Read or watch local news (via television, paper, computer, etc.)	1	2	3	4	5
Vote in local elections.....	1	2	3	4	5

D2. Would you say that in general your health is:

- ☐ Excellent ☐ Very good ☐ Good ☐ Fair ☐ Poor

D3. What impact, if any, do you think the economy will have on your family income in the next 6 months? Do you think the impact will be:

- ☐ Very positive ☐ Somewhat positive ☐ Neutral ☐ Somewhat negative ☐ Very negative

D4. What is your employment status?

- ☐ Working full time for pay
☐ Working part time for pay
☐ Unemployed, looking for paid work
☐ Unemployed, not looking for paid work
☐ Fully retired

D5. Do you work inside the boundaries of Cañon City?

- ☐ Yes, outside the home
☐ Yes, from home
☐ No

D6. How many years have you lived in Cañon City?

- ☐ Less than 2 years ☐ 11-20 years
☐ 2-5 years ☐ More than 20 years
☐ 6-10 years

D7. Which best describes the building you live in?

- ☐ One family house detached from any other houses
☐ Building with two or more homes (duplex, townhome, apartment or condominium)
☐ Mobile home
☐ Other

D8. Is this house, apartment or mobile home...

- ☐ Rented
☐ Owned

D9. About how much is your monthly housing cost for the place you live (including rent, mortgage payment, property tax, property insurance and homeowners' association (HOA) fees)?

- ☐ Less than \$300 per month
☐ \$300 to \$599 per month
☐ \$600 to \$999 per month
☐ \$1,000 to \$1,499 per month
☐ \$1,500 to \$2,499 per month
☐ \$2,500 or more per month

D10. Do any children 17 or under live in your household?

- ☐ No ☐ Yes

D11. Are you or any other members of your household aged 65 or older?

- ☐ No ☐ Yes

D12. How much do you anticipate your household's total income before taxes will be for the current year? (Please include in your total income money from all sources for all persons living in your household.)

- ☐ Less than \$25,000
☐ \$25,000 to \$49,999
☐ \$50,000 to \$99,999
☐ \$100,000 to \$149,999
☐ \$150,000 or more

Please respond to both questions D13 and D14:

D13. Are you Spanish, Hispanic or Latino?

- ☐ No, not Spanish, Hispanic or Latino
☐ Yes, I consider myself to be Spanish, Hispanic or Latino

D14. What is your race? (Mark one or more races to indicate what race you consider yourself to be.)

- ☐ American Indian or Alaskan Native
☐ Asian, Asian Indian or Pacific Islander
☐ Black or African American
☐ White
☐ Other

D15. In which category is your age?

- ☐ 18-24 years ☐ 55-64 years
☐ 25-34 years ☐ 65-74 years
☐ 35-44 years ☐ 75 years or older
☐ 45-54 years

D16. What is your sex?

- ☐ Female ☐ Male

D17. Do you consider a cell phone or land line your primary telephone number?

- ☐ Cell ☐ Land line ☐ Both

Thank you for completing this survey. Please return the completed survey in the postage-paid envelope to: National Research Center, Inc., PO Box 549, Belle Mead, NJ 08502