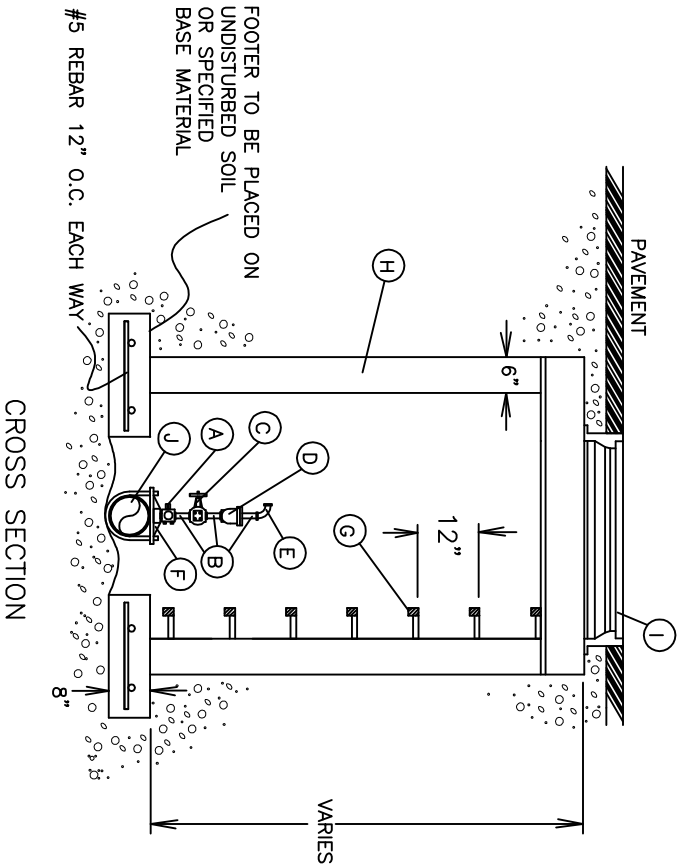
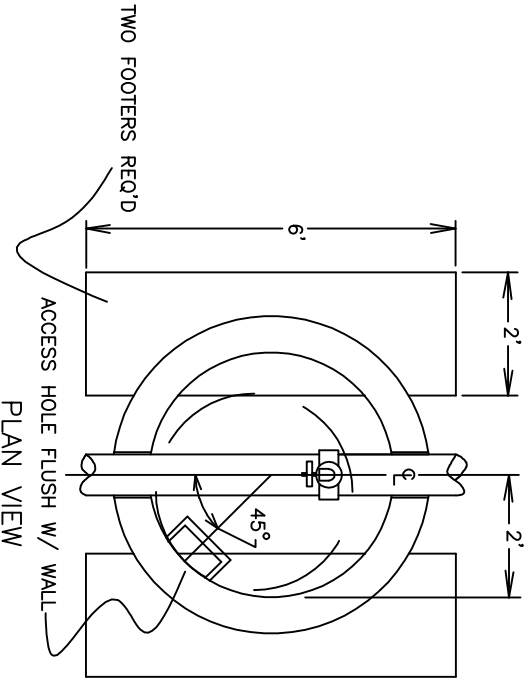


AIR & VACUUM VALVE VAULT INSTALLATION DETAIL



LEGEND

- A. 1" CORPORATION BALL VALVE TAPERED THREADS INLET W/ 1" FEMALE IRON PIPE OUTLET (MUELLER OR FORD)
- B. 1" X 3" THREADED BRASS NIPPLE
- C. 1" THREADED BALL VALVE WITH STANDARD OPERATING NUT
- D. 1" THREADED INLET APCO OR CRISPIN AIR AND VACUUM VALVE
- E. 1" X 90 DEGREE BRASS THREADED ELBOW
- F. SERVICE SADDLE REQ'D FOR C-900 AND C-905 PVC PIPE
- G. STEPS SHALL BE AS REQ'D PER STANDARD DETAIL W-5C
- H. 4' INSIDE DIAMETER REINFORCED PRECAST CONCRETE VAULT. DESIGN OF VAULT SHALL BE RATED FOR HS-20 TRAFFIC LOADING.
- I. HEAVY DUTY SINGLE 38" NOMINAL MANHOLE RING AND COVER. ADD RISERS AS NECESSARY SO LID IS LEVEL WITH PAVEMENT OR 1" ABOVE GROUND SURFACE.
- J. PIPE SIZE WILL VARY. AIR VALVE ASSEMBLY LARGER THAN 1" SIZE OR FOR MAINS LARGER THAN 16" SHALL BE SPECIALLY DESIGNED AND MEET WATER DEPARTMENT REQUIREMENTS.

GENERAL NOTES

1. ALL CONCRETE WORK SHALL COMPLY TO ACI 318 SPECIFICATIONS
2. A MANHOLE VENT PIPE IS OPTIONAL - ONLY TO BE INSTALLED IF REQ'D BY WATER DEPT.
3. VAULT SHALL BE SURROUNDED BY A MIN. OF 12" CLASS 6 MATERIAL COMPACTED AT 97% STANDARD PROCTOR.

AIR AND VACUUM
VALVE VAULT

CITY OF CAÑON CITY
ENGINEERING DEPARTMENT

STANDARD DETAIL

REVISED: MARCH 2004

W-7

W-7