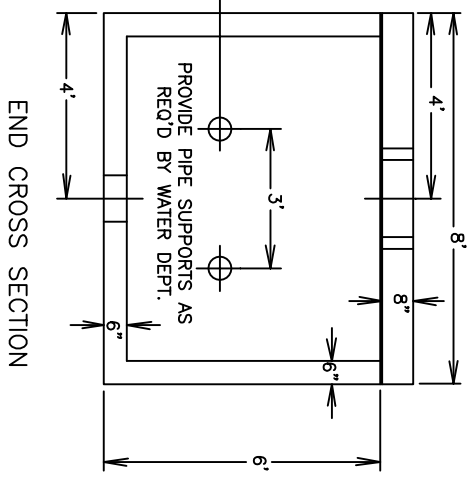
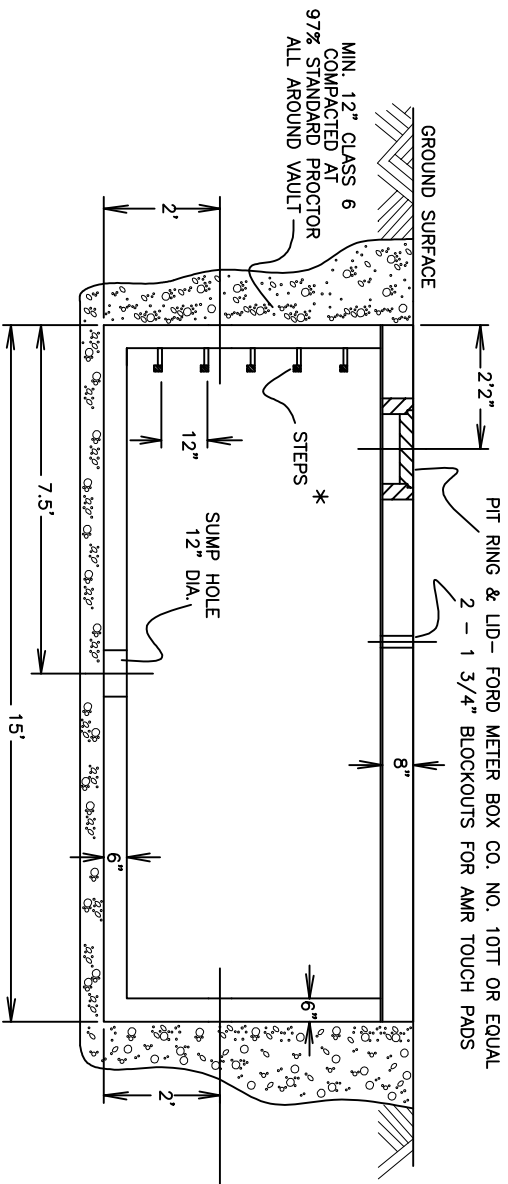


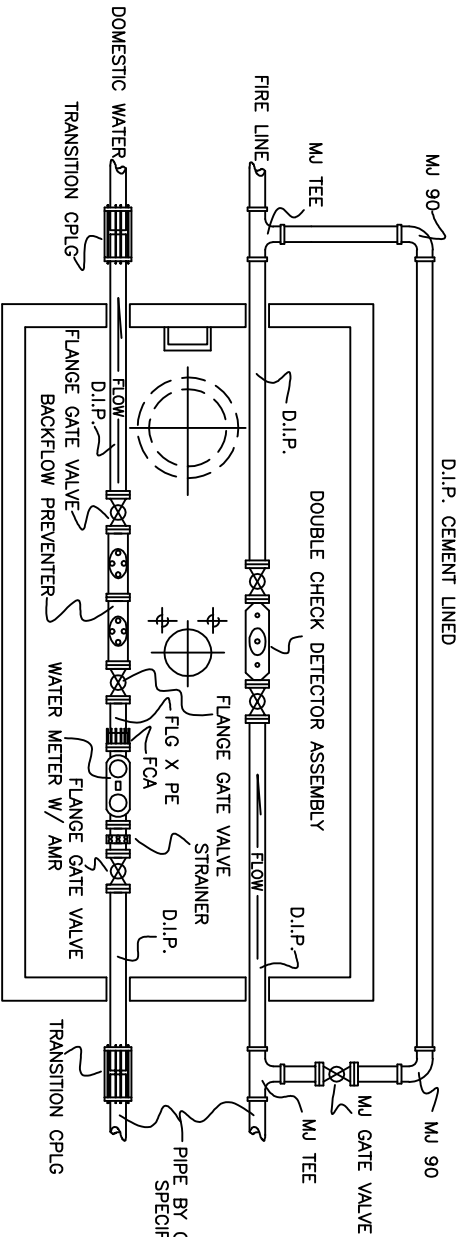
METER VAULT INSTALLATION DETAIL



SIDE CROSS SECTION

END CROSS SECTION

*NOTE: STEPS SHALL BE ALUMINUM OR GREY IRON AND CAST IN PLACE WHEN CONCRETE IS CAST AND BE 9 1/4" X 12 1/2". AS AN ALTERNATE, STEPS MAY BE POLYPROPYLENE (M.A. INDUSTRIES PS2-PFS OR EQUAL) AND CAN BE PRESS FIT INTO PREFORMED HOLES. THE STEPS SHALL BE NO MORE THAN 24 INCHES FROM THE TOP OF THE ACCESS, AND NO MORE THAN 18 INCHES FROM THE BENCH OF THE ACCESS.
 PIPE SIZE WILL VARY AS NECESSARY AND BE SUBJECT TO APPROVAL BY THE PUBLIC WORKS DEPARTMENT.
 DESIGN OF VAULT (INCLUDING REINFORCING STEEL AND CONCRETE) SHALL BE RATED FOR HS-20 LOADING.
 MODIFICATIONS AS TO SIZE OF VAULT CAN BE APPROVED BY CITY ENGINEER.



PLAN VIEW

METER VAULT

CITY OF CAÑON CITY
 ENGINEERING DEPARTMENT

STANDARD DETAIL

REVISED: AUGUST 2008